

**IDEAL FOR USE IN AGRICULTURAL BUILDINGS, WORKSHOPS, STADIUMS,  
EXHIBITION HALLS, SUPERMARKETS AND WAREHOUSES**



**HBLED-PT150W5000**



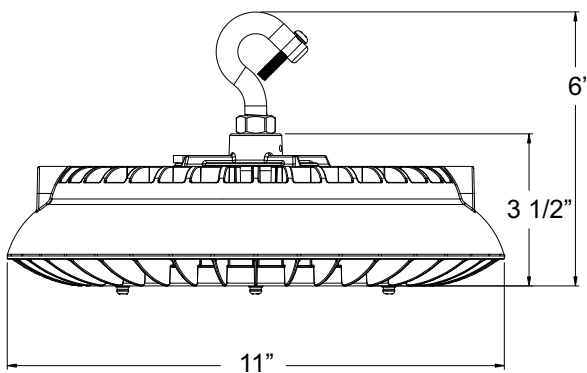
## FEATURES

- High efficiency – 150 lumens per watt.
- IP65/4X certified.
- Aluminum alloy heat sink to prolong fixture life.
- 0-10V dimmable. Compatible with any 0-10V output dimmer.
- 39" (1M) loose wire cords for power supply and 0-10V dimming.

## SPECIFICATIONS

MODEL	WATTAGE	VOLTAGE	LUMENS	CCT (K)	BEAM ANGLE	SUGGESTED CEILING HEIGHT
HBLED-PT150W5000	150W	100-277 VAC	22500	5000K	120°	23' +

## DIMENSIONS



## EMAIL US

Email us @ [agsales@canarm.ca](mailto:agsales@canarm.ca)  
to receive free Lighting  
Design Expertise or a free  
Power Savings Workbook.



**IDEAL FOR USE IN PARKING GARAGES, WAREHOUSES, FACTORIES, WORKSHOPS, CAR WASHES, FREEZERS AND AGRICULTURAL SETTINGS**

## LP48A60

## FEATURES

- This unit is designed to replace traditional fluorescent T5 and T8 fixtures.
- IP66/4X certified.
- Material: PC housing, stainless steel clips, silicon perimeter gasket, aluminum heatsink, PC lens, Isolated LED driver
- Aluminum heatsink and iron surrounded LED driver for maximum heat dissipation, prolonging the fixture lifespan.



## SPECIFICATIONS

MODEL	WATTAGE	VOLTAGE	LUMENS	HOURS	CCT (K)
LP48A60	58W	100-277V	6500	50,000	5000K

## ELECTRICAL CONTROL

Input voltage: AC100-277v  
Frequency: 50-60Hz  
Power Factor: >0.95  
Harmonic Distortion: THD<13%

### PLASTIC END CAPS



Includes plastic end cap for watertight seal to wire connection.

### REPLACEABLE LED STRIPS



Easily accessible for maintenance and to change the color Temp as required.

### EPISTAR SMD2835 CHIPS



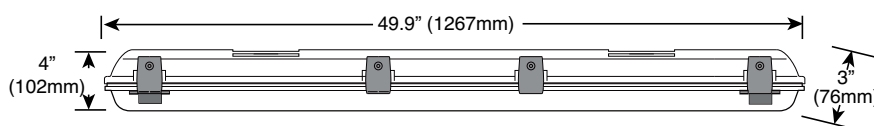
Superior lumens output, energy saving.

### ADJUSTABLE THREE MOUNTING POINTS



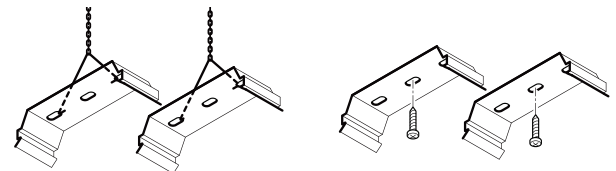
Adjustable mounting areas can meet different mounting length requirements.

## DIMENSIONS



## MOUNTING OPTIONS

Stainless steel mounting clips included for both hanging or surface mount.



## EMAIL US

Email us @ [agsales@canarm.ca](mailto:agsales@canarm.ca) to receive free Lighting Design Expertise or a free Power Savings Workbook.



**IDEAL FOR USE IN FACILITIES WHERE A 3000K LOW PROFILE LIGHT IS REQUIRED**

## LP848210-DB3K

### FEATURES

- This unit is designed to replace traditional fluorescent T5 and T8 fixtures.
- IP66/4X certified.
- Material: PC housing, stainless steel clips, silicon perimeter gasket, aluminum heatsink, PC lens, Isolated LED driver.
- Aluminum heatsink and iron surrounded LED driver for maximum heat dissipation, prolonging the fixture lifespan.
- Soft White Light.

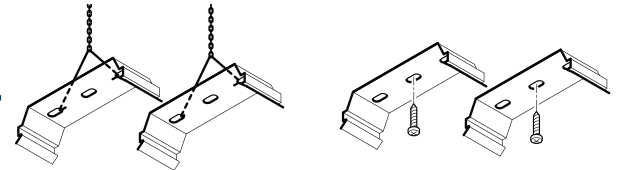


### SPECIFICATIONS

MODEL	WATTAGE	VOLTAGE	LUMENS	HOURS	CCT (K)
LP848210-DB3K	20W	230V	2100	50,000	3000K

### MOUNTING OPTIONS

Stainless steel mounting clips included for both hanging or surface mount.



### ELECTRICAL CONTROL

Input voltage: AC230V  
Frequency: 50-60Hz  
Power Factor: >0.95  
Harmonic Distortion: THD<13%

### PLASTIC END CAPS



Includes plastic end cap for watertight seal to wire connection.

### REPLACEABLE LED STRIPS



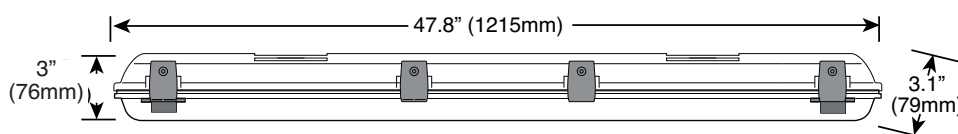
Easily accessible for maintenance and to change the color Temp as required.

### ADJUSTABLE TWO MOUNTING POINTS



Adjustable mounting areas can meet different mounting length requirements.

### DIMENSIONS



### EMAIL US

Email us @ [agsales@canarm.ca](mailto:agsales@canarm.ca) to receive free Lighting Design Expertise or a free Power Savings Workbook.



## IDEAL FOR ALL OF YOUR AGRICULTURAL APPLICATIONS

LED Bulbs are quality, long lasting lights that are efficient, durable and environmentally friendly. Their longevity saves you a lot of maintenance time on top of the efficiency benefits that you will see on your monthly electricity bills. In addition, Canarm LED bulbs work well with all electronic lighting controls and are moisture resistant, making them ideal choices for wet, humid environments.



A21

### OMNI A21 COOL WHITE LED BULBS

GENERATION	B-LED26S9A16W-DW
BULB STYLE	Omni A21
LIGHT OUTPUT	1600 Lumens
COLOR TEMPERATURE	5000K Cool White
ENERGY USED	16 Watts
MIN. STARTING TEMP.	-40°C
AVG. RATED LIFE	25,000 Hours
BEAM ANGLE	300°
DIMMABLE	Yes
ENERGY STAR	Yes

These LED bulbs come in 60/case.

### DAIRY LIGHTING



In many dairy facilities, barn lighting may be left on 24 hours a day, 7 days a week, so you need energy effective, long lasting bulbs to save you time and money. Canarm's new LED bulbs also qualify for shatterproof requirements in dairy milkhouse applications for increased safety. For ideal light - use 5000K bulbs.

### SWINE LIGHTING



Different swine production facilities require different light levels. Whether you're building a new barn or updating an older one, you can actually increase the lighting levels in your facility while reducing maintenance required and decreasing energy costs. For large areas like aiseways and farrowing rooms which require multiple lights, consider our new energy efficient bulbs. For ideal light - use 5000K bulbs.

### POULTRY LIGHTING



Light levels and duration can affect bird behavior, appetite, reproductive and egg production cycles and growth rates. Proper lighting has the ability to calm birds and helps them gain weight and be more overall productive. To achieve these different light levels, consider lighting programs with dimmable LED bulbs to provide optimum growth conditions for poultry. For ideal light - use 3000K dimmable bulbs.

## EMAIL US

Email us @ [agsales@canarm.ca](mailto:agsales@canarm.ca) to receive free Lighting Design Expertise or a free Power Savings Workbook.



**CANARM LTD. - Corporate Office**  
PO Box 367 2157 Parkedale Ave.,  
Brockville, ON  
Canada K6V 5V6  
Tel: (613) 342-5424 Fax: 1-800-263-4598

**Arthur Manufacturing Facility**  
#7686 Concession 16, RR 4  
Arthur, ON  
Canada N0G 1A0  
Tel: (519) 848-3910 Fax: (519) 848-3948

**Montréal Warehouse**  
2555 Rue Bernard Lefebvre  
Laval, QC  
Canada H7C 0A5  
Tel: (450) 655-2535 Fax: (450) 665-0910

**CANARM LTD. - USA Warehouse**  
808 Commerce Park Drive  
Ogdensburg, New York,  
USA 13669  
Tel: 1-800-267-4427 Fax: 1-800-263-4598

[www.canarm.com](http://www.canarm.com)  
Subject to Change without notice.

[agsales@canarm.ca](mailto:agsales@canarm.ca)  
Printed in Canada

## ALL WEATHER CEILING & WALL LIGHTS

SUITABLE FOR GREENHOUSES, BARNs, GARAGES, SHEDS, WORKSHOPS,  
LIVESTOCK BUILDINGS & MORE! ALL METAL CONSTRUCTION



### BL04CWG

#### CEILING/WALL MOUNT LIGHT

- Clear Glass With Metal Guard
- 7 1/4"H x 4 1/2"W
- Maximum 1 x 100W A19 type bulb



### H0-01-01S-BK

#### SINGLE HEAD SECURITY LIGHT

- Black, LED outdoor light with motion sensor
- 10W, 800 lumens, 80 CRI, 3000K, 50,000 hrs
- 4.2"W x 6.5"H x 4.2"D



### H0-01-02S-BK

#### TWO HEAD SECURITY LIGHT

- Black, LED outdoor light with motion sensor
- 20W, 1600 lumens, 80 CRI, 3000K, 50,000 hrs
- 9.3"W x 6.1"H x 4.2"D

## EMAIL US

Email us @ [agsales@canarm.ca](mailto:agsales@canarm.ca) to receive free Lighting Design Expertise or a free Power Savings Workbook.



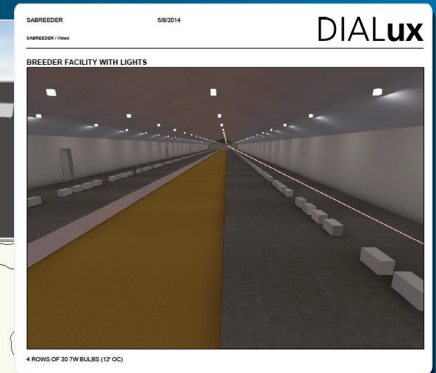
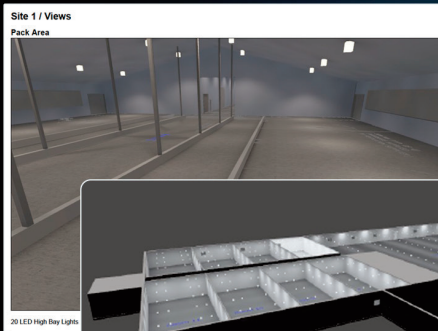
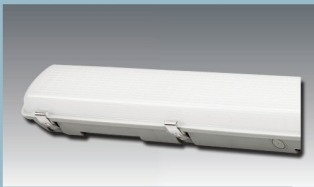


# LIGHTING LAYOUT *and* DESIGN SERVICE

Ensure you get the right lighting products into any building to meet your customers needs.

We use a Professional Sales & Presentation Tool to create a 3D Rendering of building with visuals of the lighting products installed.

We will also provide a detailed report with lighting graphs and total project wattage usage.



Email [agsales@canarm.ca](mailto:agsales@canarm.ca) for more information