

# XBL SERIES

Belt drive wall fans designed for economic commercial and light duty industrial exhaust applications

XBL series fans are typically used for low pressure applications with little or no duct work.

The XBL series fans are constructed for efficient, economical operation and designed to be used primarily as exhaust fans for factories, warehouses, gymnasiums, greenhouses and more.

## FEATURES

- Available in 24", 30", 36", 42" and 48" blade diameters
- Heavy gauge steel fan panel with deep spun orifice and flared venturi to maximize efficiency.
- Heavy steel post Motor mount with "U" clamp motor mount/belt tensioner.
- ODP motors are standard.
- Durable baked on textured polyethylene powder coat finish.
- Accepts all "XB" series accessories, including cabinets, sleeves, shutters and guards.



**Non-stock, made-to-order products are non-returnable and cannot be cancelled.**

## SPECIFICATIONS

BLADE DIAMETER	MODEL			HP	CFM	WEIGHT (LBS)
	SINGLE PHASE	230/460V PHASE	575V			
24"	XBL24T10033	XBL24T30033M	XBL24T30033P	1/3	3270	50
30"	XBL30T10033	XBL30T30033M	XBL30T30033P	1/3	7730	60
36"	XBL36T10050	XBL36T30050M	XBL36T30050P	1/2	9870	65
42"	XBL42T10075	XBL42T30075M	XBL42T30075P	3/4	14800	75
48"	XBL48T10100	XBL48T30100M	XBL48T30100P	1	21500	98

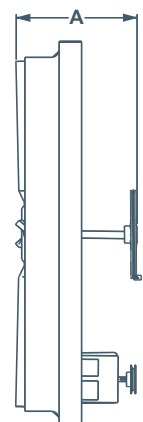
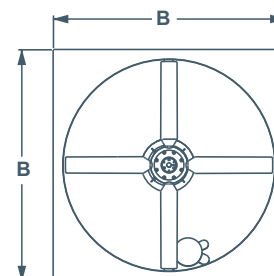
Weights subject to change.

## DIMENSIONS

MODEL	BLADE DIAMETER	A	B X B SQUARE
XBL24	24"	17.5"	29.625"
XBL30	30"	17.5"	35.625"
XBL36	36"	17.5"	41.625"
XBL42	42"	17.5"	47.625"
XBL48	48"	17.5"	53.625"

Dimensions subject to change.

For CBS dimensions & illustration, see the wall exhaust fans and venturi dimensions page.



## OPTIONS



For fan complete with cabinet/guard and shutter, substitute "T" with CBS

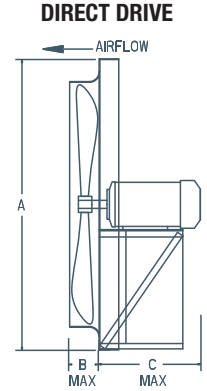
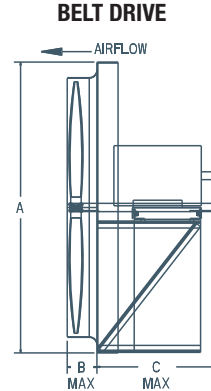
# WALL EXHAUST FANS & VENTURI DIMENSIONS

for Standard Options

## VENTURI



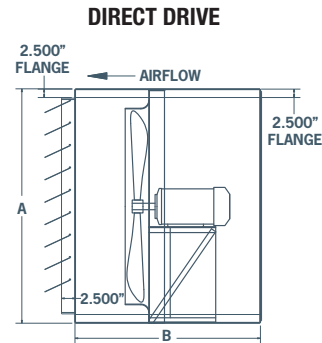
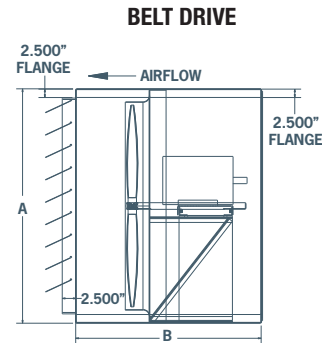
BLADE DIAMETER	A X A SQUARE	B	C					
			BELT DRIVE MOTOR FRAME			DIRECT DRIVE MOTOR FRAME		
			56 - 184	213 - 286	56 - 184	213 - 215	254 - 286	
12"	16.125"	2.0"	--	--	13"	--	--	--
14"	18.125"	2.5"	--	--	13"	--	--	--
16"	20.125"	3.0"	--	--	13"	--	--	--
18"	22.125"	3.0"	--	--	13"	--	--	--
20"	24.125"	3.5"	--	--	13"	--	--	--
24"	29.625"	4.0"	18"	--	13"	14"	--	--
30"	35.625"	4.5"	18"	--	13"	14"	25"	--
36"	41.625"	5.0"	18"	28"	13"	14"	25"	--
42"	47.625"	5.0"	18"	28"	13"	14"	25"	--
48"	53.625"	5.0"	18"	28"	--	14"	25"	--
54"	59.657"	5.5"	18"	28"	--	--	--	--
60"	67.657"	6.0"	18"	28"	--	--	--	--



## CABINET, BACK GUARD & SHUTTER (CBS)



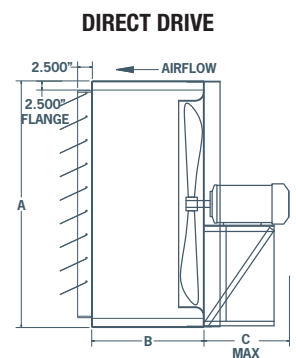
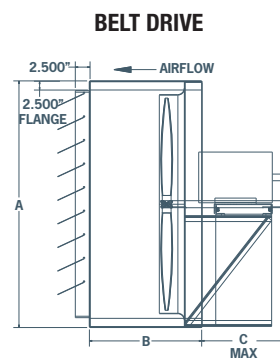
BLADE DIAMETER	A X A SQUARE	B	B					
			BELT DRIVE MOTOR FRAME			DIRECT DRIVE MOTOR FRAME		
			56 - 184	213 - 286	56 - 184	213 - 215	254 - 286	
12"	16.375"	--	--	--	26"	--	--	--
14"	18.375"	--	--	--	26"	--	--	--
16"	20.375"	--	--	--	26"	--	--	--
18"	22.375"	--	--	--	26"	--	--	--
20"	24.375"	--	--	--	26"	--	--	--
24"	29.875"	33"	--	--	33"	33"	--	--
30"	35.875"	33"	--	--	33"	33"	43"	--
36"	41.875"	33"	43"	--	33"	33"	43"	--
42"	47.875"	33"	43"	--	33"	33"	43"	--
48"	53.875"	33"	43"	--	--	33"	43"	--
54"	59.9375"	33"	43"	--	--	--	--	--
60"	67.9375"	33"	43"	--	--	--	--	--



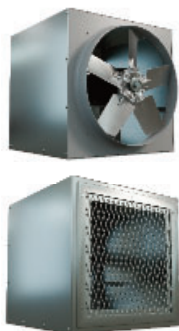
## FRONT SLEEVE & SHUTTER (SLS)



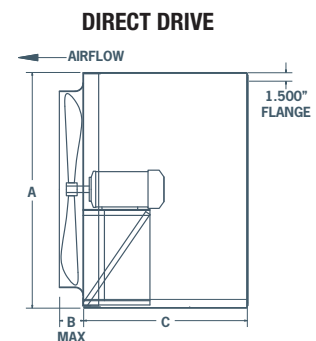
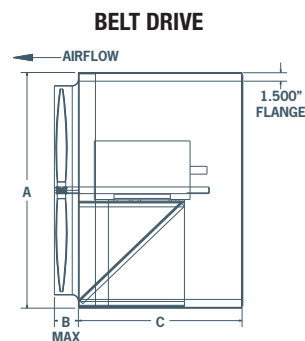
BLADE DIAMETER	A X A SQUARE	B	C					
			BELT DRIVE MOTOR FRAME			DIRECT DRIVE MOTOR FRAME		
			56 - 184	213 - 286	56 - 184	213 - 215	254 - 286	
12"	16.375"	15.0"	--	--	12"	--	--	--
14"	18.375"	15.0"	--	--	12"	--	--	--
16"	20.375"	15.0"	--	--	12"	--	--	--
18"	22.375"	15.0"	--	--	12"	--	--	--
20"	24.375"	15.0"	--	--	12"	--	--	--
24"	29.875"	19.0"	15"	--	10"	11"	--	--
30"	35.875"	19.0"	15"	--	10"	11"	22"	--
36"	41.875"	19.0"	15"	25"	10"	11"	22"	--
42"	47.875"	19.0"	15"	25"	10"	11"	22"	--
48"	53.875"	19.0"	15"	25"	--	11"	22"	--
54"	59.9375"	19.0"	15"	25"	--	--	--	--
60"	67.9375"	19.0"	15"	25"	--	--	--	--



## REAR SLEEVE & BACK GUARD (SLB)



BLADE DIAMETER	A X A SQUARE	B	C					
			BELT DRIVE MOTOR FRAME			DIRECT DRIVE MOTOR FRAME		
			56 - 184	213 - 286	56 - 184	213 - 215	254 - 286	
12"	16.375"	2.0"	--	--	15"	--	--	--
14"	18.375"	2.5"	--	--	15"	--	--	--
16"	20.375"	3.0"	--	--	15"	--	--	--
18"	22.375"	3.0"	--	--	15"	--	--	--
20"	24.375"	3.5"	--	--	15"	--	--	--
24"	29.875"	4.0"	19"	--	19"	19"	--	--
30"	35.875"	4.5"	19"	--	19"	19"	29"	--
36"	41.875"	5.0"	19"	29"	19"	19"	29"	--
42"	47.875"	5.0"	19"	29"	19"	19"	29"	--
48"	53.875"	5.0"	19"	29"	--	19"	29"	--
54"	59.9375"	5.5"	19"	29"	--	--	--	--
60"	67.9375"	6.0"	19"	29"	--	--	--	--

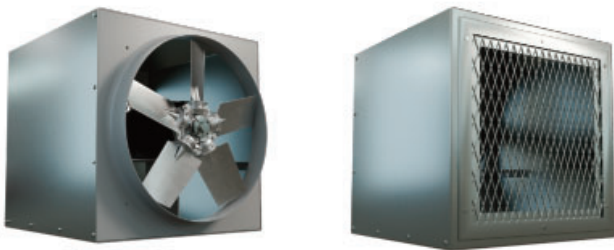


## OPTIONS & ACCESSORIES

### CABINET, BACK GUARD & SHUTTER (CBS)



### REAR SLEEVE & BACK GUARD (SLB)



### FRONT SLEEVE & SHUTTER (SLS)



### STEEL CONTROL & MOTORIZED CONTROL DAMPERS



Motorized steel control dampers can be mounted in fan cabinet or sleeve in either exhaust or intake applications. Consult factory.

### GUARDS

#### FRONT GUARD

Front guards available, consult factory.

Wire mesh not available on all sizes.



### MOTOR OPTIONS

#### TWO SPEED MOTOR

Two speed motors are available for some of Canarm/LFI's exhaust fans. 1800/1200 or 1800/900 RPM variable torque, single and three phase. Consult factory for available voltages and configurations.

#### EXPLOSION PROOF MOTORS

Some of Canarm/LFI exhaust fans can be equipped with Explosion Proof Motors for hazardous locations. Class I, Groups C & D - Class II, Groups F & G. Consult factory for models.

**Class I, Group C** Atmospheres containing ethyl ether, ethylene, gases or vapors of equivalent hazard.

**Class I, Group D** Atmospheres such as acetone, ammonia, benzene, butane, cyclopropane, ethanol, gasoline, hexane, methane, natural gas, naphtha, propane, or gasses or vapors of equivalent hazard.

**Class II Group F** Atmospheres containing carbonaceous dust, including carbon black, charcoal, coal, or coke dusts that have more than 8% total entrapped volatiles, or dusts that have been sensitized by other materials so that they present an explosion hazard.

**Class II Group G** Atmospheres containing combustible dusts not included in group E or F, including flour, grain, wood, plastic and chemicals.

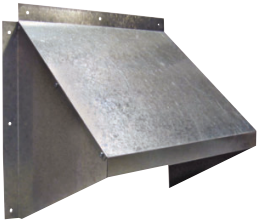
### SPECIAL COATING

For most applications, Canarm's standard enamel paint will provide the necessary surface protection for painted parts. For special requirements, coatings such as hot dipped galvanizing and epoxy, please consult factory.

### DISCONNECT SWITCHES

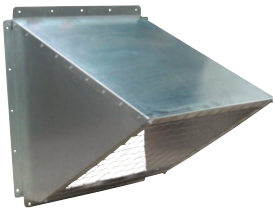
Wire disconnect switches are available. See Controls & Thermostats section for details.

# HOODS



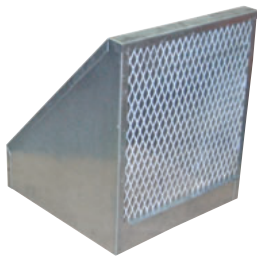
## GH GALVANIZED HOODS

- Economical shipping.
- Easy to assemble, galvanized hood.
- No screens.



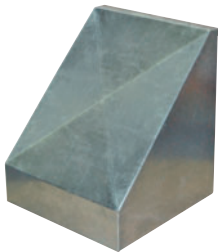
## GH KNOCK DOWN HOODS

- Easy to assemble, galvanized hood.
- Includes bird screen.



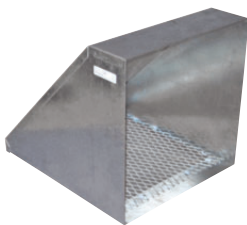
## WHA HOODS

- For AX fans.
- Shipped fully assembled.
- 18 gauge galvanized weather hoods complete with bird screen.
- Optional insect screen available. Consult factory.



## WHP HOODS

- For Panel fans.
- 18 gauge galvanized weather hoods complete with bird screen.
- Optional insect screen available. Consult factory.



## INTAKE & EXHAUST HOODS

- Shipped fully assembled.
- 18 gauge galvanized weather hoods complete with bird screen.



## PLASTIC HOODS

- Rugged, grey plastic hood.
- No screens.

HOOD MODEL	DIMENSIONS		APPROX. WEIGHT (LBS)	FANS THAT WILL FIT
	INSIDE DIMENSIONS	OUTSIDE DIMENSIONS		
GH GALVANIZED HOODS				
GH-XF12-M	14.75"W X 14.0"H	18"W X 15.75"H	4	XF12 / XB12 / SD8 / SD10 / AX8 / AX10 / AX12
GH-XF16-M	18.75"W 17.75"H	22"W X 19.75"H	7	XF16 / XB12 / HV12 / HVA12 / ADD12 / DDP12 / DDS12 / SD12-14 / AX14-16
GH-XF20-M	22.75"W X 22"H	26"W X 23.75"H	9	XF20 / XB14 / XB16 / HV14-16 / HVA14-16 / ADD14-16 / DDP14-16 / DDS14-16 / SD16-18 / AX18-20
GH-XF24-M	26.75"W 26"H	29"W X 27.25"H	12	XFS24
GH KNOCKDOWN HOODS				
GH-KD24	31.65"W X 31.66"H	34.65"W X 34.69"H	31	XB24 / HV24 / HVA24 / ADD24 / DDP24 / DDS24 / SD24 / AX24
GH-KD36	43.62"W X 43.93"H	46.62"W X 46.82"H	75	XB30-36 / HV30-36 / HVA30-36 / ADD30-36 / DDS30-36 / SD30-36 / AX30-36 / AX42
GH-KD48	55.62"W X 55.25"H	58.62"W X 58.82"H	TBA	XB42-48 / HV42-48 / HVA42-48 / ADD42-48 / DDS42-48 / SD42 / AX42
GH-KD60	69.76"W X 69.92"H	72.76"W X 72.95"H	TBA	XB54-60 / HV54-60 / HVA54-60 / ADD54-60
WHA HOODS				
WHA8-10	12.11"W X 12.11"H	-	13	AX08-10, SD8
WHA12	14.05"W X 14.05"H	-	16	AX12, SD10
WHA14	16.11"W X 16.11"H	-	22	AX14, SD12
WHA16	18.11"W X 18.11"H	-	26	AX16, SD14
WHA18	20.11"W X 20.11"H	-	29	AX18, SD16
WHA20	22.05"W X 22.05"H	-	31	AX20, SD18
WHA24	26.05"W X 26.05"H	-	47	AX24
WHA30	33.05"W X 33.05"H	-	59	AX30
WHA36	39.11"W X 39.11"H	-	76	AX36
WHP HOODS				
WH8-10P	14.45"W x 14.45"H	-	20	P08 / P10
WH12P	17.40"W X 17.40"H	-	16	P12
WH14P	19.20"W X 19.20"H	-	24	P14
WH16P	21.20"W X 21.20"H	-	26	P16
WH18P	23.20"W X 23.20"H	-	29	P18
WH20P	25.20"W X 25.20"H	-	44	P20
WH24P	29.15"W X 29.15"H	-	44	P24
WH30P	35.65"W X 35.65"H	-	60	P30
WH36P	41.65"W X 41.65"H	-	77	P36
EXHAUST / INTAKE / WEATHER HOODS				
EH12	16.55"W X 16.55"H	-	9	XF12 / SD8-12 / AX8-14 / XB12 / HV12 / HVA12 / ADD12 / DDP12 / DDS12
EH14	18.60"W X 18.60"H	-	15	XB14 / HV14 / HVA14 / ADD14 / DDP14 / DDS14 / SD14 / XF16 / AX16
EH16	20.60"W X 20.60"H	-	20	AX18 / SD16 / XB16 / HV16 / HVA16 / ADD16 / DDP16 / DDS16
EH18	22.55"W X 22.55"H	-	31	SD18 / XB18 / HV18 / HVA18 / ADD18 / DDP18 / DDS18 / XF20 / AX20
EH20	24.55"W X 24.55"H	-	44	SD20 / XB20 / XF24 / HV20 / HVA20 / ADD20 / DDP20 / DDS20
EH24	30.05"W X 30.05"H	-	60	SD24 / AX24 / XB24 / ADD24 / HV24 / HVA24 / DDP24 / DDS24
EH30	36.35"W X 36.35"H	-	72	SD30 / AX30 / XB30 / HV30 / HVA30 / ADD30 / DDS30 / JFHVA24
EH36	42.30"W X 42.30"H	-	104	SD36 / AX36 / XB36 / HV36 / HVA36 / ADD36 / DDS36 / JFHVA30
EH42	48.63"W X 48.63"H	-	163	XB42 / HV42 / HVA42 / ADD42 / DDS42 / JFHVA36 / SD42 / AX42
EH48	54.64"W X 54.64"H	-	TBA	XB48 / HV48 / HVA48 / ADD48 / DDS48 / JFHVA42
EH54	61.20"W X 61.20"H	-	TBA	XB54 / HV54 / HVA54 / ADD54 / JFHVA48
EH60	69.39"W X 69.39"H	-	TBA	XB60 / HV60 / HVA60 / ADD60
PLASTIC HOODS				
HFP-18G	21.50"W X 21.75"H	-	9	S8 / S10 / S12 / S14 / S16 / S18V / AX08 / AX10 / AX12 / AX14 / AX16 / AX18
HFP-24G	27.50"W X 27.75"H	-	13	S20 / S24 AX20 / AX24