

JANUARY 2020



Proper ventilation in warehouses is crucial. Generally speaking, ventilation offers the ability to control indoor environments through proper airflow. However, ventilation is really more than just controlling indoor air. Warehouse ventilation for example, can be particularly difficult, because you have to deal with fluctuations in both temperature and humidity. We also know that cooling or heating large areas is expensive and can take profits directly from the bottom line. Large warehouse footprints, tall interiors, types of product stored, dock doors and combustion equipment are all key factors that must be considered when selecting ventilation equipment. OSHA regulations – which dictate minimum indoor air quality standards for warehouse spaces – also play a role in product selection. Warehouse designers and owners must look at all of these different factors when selecting ventilation equipment.

What is your group doing to ensure proper warehouse ventilation? What equipment do you have and what equipment do you need? Look to Canarm for a complete line of cost effective, durable, quality warehouse ventilation and environmental products to provide a comfortable and safe work environment for your workers while helping you save money.

Canarm - a trusted name in lighting – also offers High Bay LED lights to help you reduce energy costs and reduce your carbon footprint.

Have Canarm design your LED High Bay and HVLS fan layout – Call factory for details!

Browse this booklet or visit our web site at [www.canarm.com](http://www.canarm.com) to learn more about us and how we can become your **one stop shop** for all of your warehouse ventilation & lighting needs!

CEILING FANS	DOCK FANS	ROOF EXHAUSTERS	ROOFTOP SUPPLY	SPUN ALUMINUM EXHAUSTERS
				
CP, CP HPWP, HVLS	MCS, MCSA, MCU, MCUA, MCU, MCYA, HVR, CA	RTA-SH, RTA, RB, RD	SDS, EMUA, SIS, 700, 9200, HC, CW	A2X, ALX-UB, ALX-UD
WALL EXHAUST FANS	BATHROOM EXHAUST FANS	DAMPERS & LOUVERS	INDUSTRIAL LIGHTING	
				
ADD, DDS, HV, HVA, XB, XBL	CEP, BPT & CL	AD, AF, EAL-2, EAL-2F, EAL-4, EAL-4F, EAL-6, EAL-6F, 3000, 3000-M	HBLED-PT100W5000 & HBLED-PT150W5000	Platinum member

## HVLS FANS

NEW

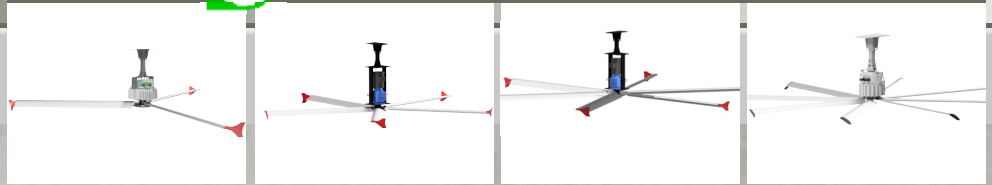
## CEILING FANS

Warehouse floor space is prime real-estate. Ceiling fans are space savers and allow owners to expand their business by stocking more items instead of boxed fans. Ceiling mount fans reduce heat stratification and provide air movement in the upper portions of a warehouse, providing employees with a comfortable working environment during winter and summer extremes.

Canarm's HPWP ceiling fans work well in high moisture environments. They not only stand up to moisture, but they also aid in reducing condensation build up by constantly mixing air from ceiling to floor.

Natural ventilation is sometimes used in warehouse spaces, but it can be challenging. For instance, it is difficult to manage humidity and temperature in the absence of outside breezes or if it's simply too cold outside to open ventilation ports such as windows and overhead doors.

Canarm ceiling fans provide air movement in those times of need. Canarm also offers fan guards as optional accessories for added protection to the fan, product and employees when product stacks or high racking are near to the fans.



High Volume, Low Speed Ceiling Fans - 6' to 24' with 3, 5, 6 or 8 blades

CP



Industrial Ceiling Fan  
White - 36", 48", & 56";  
Black or Brown - 56"

CP HPWP



High Performance Ceiling Fans  
48", 56" & 60"

## DOCK FANS

Canarm Industrial mancoolers and oscillating fans are the perfect solution to dispel heat and reduce stuffiness around loading docks, thus ensuring a more comfortable working environment for those who load and unload trailers.

High-capacity fans can assist with the removal of both stagnant air from large warehouse areas, as well as carbon dioxide produced from transport equipment moving about in the warehouse. Many of Canarm's commercial fans are also suitable for environments such as break-rooms and offices where quiet operation is necessary to allow for communication.

Canarm's line of dock fans are built for commercial and industrial use. Many different mounting configurations are available, including: equipment stands, pedestal mounts, yoke mounts, swing arms, wall, oscillating and mobile construction.

MCS



High Stand Industrial Mancooler  
Steel or Cast Alum Blade  
18" - 48"

MCSA

MCY

MCYA



Yoke Mount Industrial Mancooler  
Steel or Cast Alum Blade  
18" - 36"

HVR



High Velocity Round Drum Fan  
24" - 36"

CA



Pedestal Fans - Heads Only  
24" & 30"

CFWB



Wall Bracket

CFCM



Ceiling Mount  
(Non-oscillating models only)

CFKPB



Knock Down  
Pedestal Base

## ROOFTOP EXHAUSTS

The Canarm roof mounted upblast line of ventilators provides cost effective options for general purpose ventilation inside warehouses. Rooftop exhaust fans are intended to remove surplus heat and odors from warehouse spaces to improve air quality and increase occupant well-being. The fans exhaust high volumes of air above the roof deck at low to medium static pressures. Included in the Canarm offering of upblast roof fans are low silhouette designs, which can be used to meet architectural specifications for aesthetics.

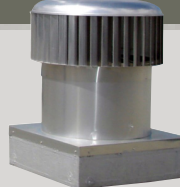
The HTE is a wind-driven roof exhaust fan. Providing natural ventilation - which has proven to be effective while keeping operating costs down - it is an excellent alternative to traditional industrial ventilators that perform poorly and consume energy.

RTA-SH & RTA



Belt Drive  
Roof Exhauster

HTE



Hurricane Turbine  
Exhausters

RD



Direct Drive  
Roof Exhauster

RB



Belt Drive  
Roof Exhauster



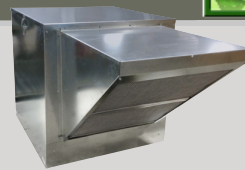
## ROOFTOP - SUPPLY

Canarm's rooftop supply fans are designed specifically for roof mounted applications where they supply clean, unconditioned make-up air.

These fans are ideal when opened dock doors or windows are not an option due to inclement weather such as cold, rain and snow.

Canarm's filtered SIS and 700-series units give warehouse buildings added protection from particulate infiltration via their filtered intake options. The rooftop fans offer discreet and efficient operation in a compact design.

**SIG**



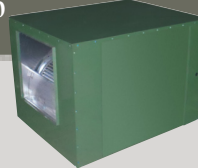
Side Intake Filtered Fresh Air Supply Units

**700**



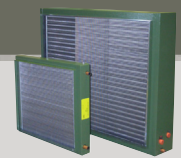
Filtered Fresh Air Supply Units

**9200**



Forward Curved Inline Duct Blower

**HC**



Heating & Cooling Coils

**CW**

## SPUN ALUMINUM EXHAUSTERS

Canarm spun aluminum exhausters are another cost effective option for warehouse ventilation.

The aluminum units are lightweight, corrosion resistant alternatives to steel construction and have been designed for roof and wall mounting configurations, giving building owners and designers more options for fan placement.

Spun aluminum fans are quiet and weather resistant.

The fans use aluminum, non-overloading, backward incline wheels and may be found in higher static applications. The fans are offered in upblast and downblast airflow as well as belt and direct drive configurations.

**ALX-UD & ALX-UD-EC**



Upblast Direct Drive Spun Aluminum Roof Exhauster

**ALX-DD & ALX-DD-EC**



Downblast Direct Drive Spun Aluminum Roof Exhauster

**A2X**



Spun Aluminum Roof Exhauster

**NEW LOW PROFILE DESIGN**

**ALX-DB**



Downblast Belt Drive Spun Aluminum Roof Exhauster

**ALX-UB**



Upblast Belt Drive Spun Aluminum Roof Exhauster

## WALL EXHAUST FANS

Just like roof mounted fans, Canarm wall mounted fans can give engineers and building owners another option for high volume air movement without taking up valuable floor space. Canarm wall fans allow customers to properly size fans for low noise and easy maintenance.

The fans are typically mounted in exterior walls of the building or possibly mounted directly to the wall themselves. Canarm provides several propeller configurations to meet various performance demands, such as weight restrictions, corrosive and explosive environments and energy conscious building parameters. Propeller materials range from aluminum, galvanized and glass reinforced polyamide. Drive configurations are belt and direct drive construction.

Depending on the customers' needs, fans can be oriented in supply or exhaust configurations. Some models are also available with reversible airflow. Many times the wall fans are used in conjunction with louvers and dampers to meet building aesthetics and/or environmental conditions such as rain, snow and wind. When customers look to ensure performance and quality with fan options, Canarm's wall mounted fan line is yet another way to effectively ventilate those spaces.

**ADD**



Direct Drive Wall Fans

**DDS**



Direct Drive Wall Fans

**HV**



Belt Drive Wall Fans

**HVA**



Belt Drive Wall Fans

**XB**



Belt Drive Wall Fans

**XBL**



Belt Drive Wall Fans

## BATHROOM EXHAUST FANS

Bathroom ventilation is sometimes overlooked when looking at warehouse buildings. Canarm offers three different options for bathroom ventilation to assist in the removal of stale air trapped inside boxed-in rooms to keep it smelling fresh.

Additional options for bathroom exhaust can be found in the spun aluminum exhausters section - particularly the spun downblast models.

Sound and volume of air are important considerations when choosing bathroom fans. Canarm's line of bathroom exhaust fans are built with both items in mind.

### CEP SERIES

**NEW**



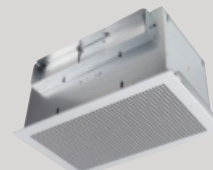
Ultra Quiet Ceiling Exhaust Fans

### BPT SERIES



Bathroom Exhaust Fans

### CL SERIES



Ceiling Exhausters

## DAMPERS & LOUVERS

Intake louvers and dampers give warehouse designers another option for allowing air into the building. Louvers and dampers are used to keep undesirable elements such as rain, water and dirt from entering a space while still supplying fresh air. They are often seen as aesthetic members for building exteriors.

Many times warehouse buildings use louvers for natural ventilation, and are often used in conjunction with wall fans. Louvers from Canarm offer high free areas, range from 2" to 6" deep and include a birdscreen.

Some facilities require tighter control of their ventilation. For applications where intake air or conditioned air leakage is not desirable, we offer both galvanized and aluminum dampers. Some conditioned environments and wind driven rain applications may also warrant low leak dampers, which are also available from Canarm.

We also offer a selection of Belimo actuators to suit most applications.



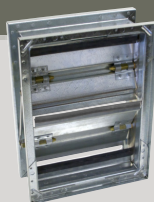
Backdraft Dampers / Motorized Backdraft Dampers



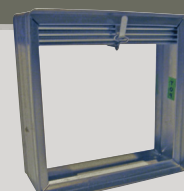
Fixed Louvers  
2", 4" & 6"



Operating Louvers



Steel Control Dampers  
Standard, Low Leakage  
& Heavy Duty Construction



Fire Dampers  
Vertical & Horizontal



Aluminum Control Dampers  
Opposed & Parallel Blades

## LIGHTING



Just like ventilation, Canarm energy saving LED High Bay Lights improve safety & productivity and reduce maintenance time and costs while being energy efficient.

Warehouses face many unique challenges with respect to lighting. Warehouse spaces exceeding 20' heights with tall rack systems, for example, might experience some unwanted downtime for light maintenance. Minimize this risk with Canarm's LED High Bay lights, which are up to 40% brighter than HPS High Bay Lights and provide uniform distribution of light over rack systems making it easier to see. With the added brightness, the LED lights run on 65% less energy than the 400W HPS lights. This reduced energy consumption can lead to significant savings year after year. Maintaining HPS lighting within the warehouse space can also be expensive due to ballast failure, product re-positioning, rack placement and tall ceiling heights. Service equipment may force owners to incur such expenses as renting boom equipment to move product and disassemble racks just to gain access to the lights. The reliability (5 year warranty) and durability of the IP65 designed LED High Bay Lights, minimizes maintenance costs, saving you even more!

Our knowledgeable, in-house experts can answer any questions you have about your lighting needs. Canarm now offers a new lighting layout design service that can provide you with 3D renderings with visuals of the recommended lighting products actually used within the warehouse building.

Other noteworthy features of the LED High Bay Light: Crisp Bright Cool White color 5000K, rated for 100-277V voltages, and Instant On/Instant Bright with no warm up down to -30°F (-35°C).

### HBLED-PT100W5000



LED High Bay Light



### HBLED-PT150W5000



LED High Bay Light

### DISTRIBUTED BY:

**CANARM LTD. - Corporate Office**  
2157 Parkedale Ave., PB Box 367 Brockville, ON  
Canada K6V 5V6  
Tel: (613) 342-5424  
Fax: 1-800-263-4598

**CANARM LTD. - USA Warehouse**  
808 Commerce Park Drive  
Ogdensburg, New York, USA 13669  
Tel: 1-800-267-4427  
Fax: 1-800-263-4598



**Arthur Manufacturing Facility**  
#7686 Concession 16, RR 4 Arthur, ON  
Canada N0G 1A0  
Tel: (519) 848-3910  
Fax: (519) 848-3948

**Montreal Distribution Center**  
2555 Rue Bernard Lefebvre  
Laval, QC H7C 0A5 Canada  
Tel: 450.665.2535  
Fax: 450.665.0910

[www.canarm.com](http://www.canarm.com)

[hvacsales@canarm.ca](mailto:hvacsales@canarm.ca)