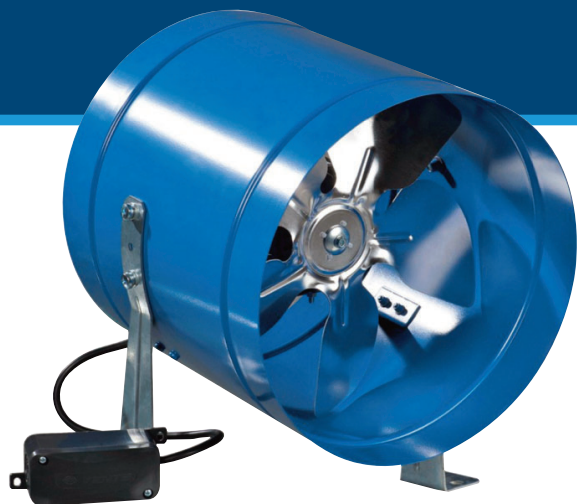


# VKOM SERIES

## Axial Fans



### MOUNTING

VKOM fans are easy to install. The fans are supplied with fastening brackets and can be installed both vertically and horizontally. The fans can be wired through a wall switch in the room or with an optional control that corresponds to power and current of the fan.

### MOTOR

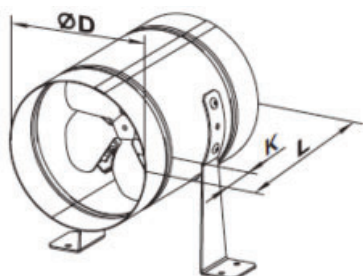
External rotor motor on ball bearing with thermal protection ensures long life of the fans.

### PERFORMANCE SPECIFICATIONS

MODEL	RPM	SONES	DUCT DIA.	MAX WATTS	MAX AMPS	CFM vs. STATIC PRESSURE (Ps) in WG				MAX Ps	VOLTS
						0"	0.125"	0.25"	0.375"		
VKOM 150	1650	1.6	6"	28	0.41	115	61	-	-	0.22	115
VKOM 200	1680	2.5	8"	43	0.63	262	211	56	-	0.3	115

### DIMENSIONS

MODEL	DIMENSIONS		
	ØD	L	K
VKOM 150	6 5/16"	8 11/16"	1 9/16"
VKOM 200	8 1/8"	8 11/16"	1 9/16"



Specially designed for mounting inside ventilation shafts, VKOM fans are the perfect air movers. These fans can effectively and quietly handle major ventilation challenges such as large warehouses without taking up valuable space.

### FEATURES

- Voltage: 120 V, 60 Hz.
- Motor: Single-phase asynchronous motor.
- Duct compatibility: Ø 6", 8".
- Airflow capacity: up to 262 CFM.
- Sones: 1.6 – 5.1.
- Power consumption: 28 – 109 W.
- Suitable for working airstreams up to 32-104 °F.
- IPX4 protection.
- Thermal overload protection.
- 2 year warranty.

### HOUSING

Fan's body is made of steel with polymeric coating, while the impeller is made of aluminum.

### ACCESSORIES

- Air Ducts
- Grilles and Hoods
- Backdraft Dampers
- Speed Controls
- Clamps

For more information on available accessories, Accessories & Motors section.

