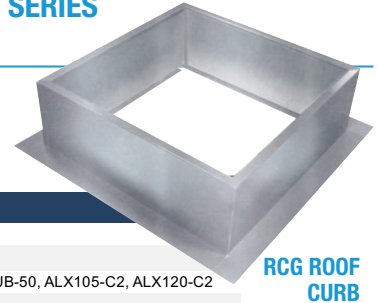


ROOF CURBS

GALVANIZED ROOF CURBS - NON-VENTED - FOR 300, 700, SIS, ALX, SB-SBRM & SD-SDUB SERIES (Non-vented) 18" High (RCG) or 12" High (RCGL)

- RCG are 18" high
- RCGL are 12" high
- 18 gauge galvanized steel construction
- 1 3/4" flanges
- Insulated curbs available (RCGI or RCGLI)
- Shipped fully assembled



Part # (Non-Insulated)	Part # (Insulated)	Curb OD Dimension sq	Curb fits Models
RCG17.5 / RCGL17.5	RCGI17.5 / RCGLI17.5	17.5"	ALX105, ALX120, SD-SDUB-10, SD-SDUB-12
RCG18.5 / RCGL18.5	RCGI18.5 / RCGLI18.5	18.5"	307
RCG19.5 / RCGL19.5	RCGI19.5 / RCGLI19.5	19.5"	ALX135, ALX150, SB-SBRM-13, SD-SDUB-30, SD-SDUB-33, SD-SDUB-50, ALX105-C2, ALX120-C2
RCG22.5 / RCGL22.5	RCGI22.5 / RCGLI22.5	22.5"	309,709,SIS-09
RCG23.25 / RCGL23.25	RCGI23.25 / RCGLI23.25	23.25"	ALX165, SB-SBRM-15, SD-SDUB-85, ALX135-C2, ALX150-C2, ALX-180-C2
RCG26.5 / RCGL26.5	RCGI26.5 / RCGLI26.5	26.5"	ALX180, SIS-10, SB-SBRM-18, ALX165-C2
RCG30.5 / RCGL30.5	RCGI30.5 / RCGLI30.5	30.5"	312,712,715, SIS-12, SIG-12, SIG-15
RCG31.5 / RCGL31.5	RCGI31.5 / RCGLI31.5	31.5"	ALX210, ALX245, SB-SBRM-24
RCG34.5 / RCGL34.5	RCGI34.5 / RCGLI34.5	34.5"	315,718,SIS-15,SIS-18
RCG38.5 / RCGL38.5	RCGI38.5 / RCGLI38.5	38.5"	318, SB-SBRM-30, ALX210-C2, ALX245-C2, ALX300
RCG42.5 / RCGL42.5	RCGI42.5 / RCGLI42.5	42.5"	SIS-20, ALX360, SB-SBRM36

Please note Galvanized Curbs (RCG's) are for UL705 only.

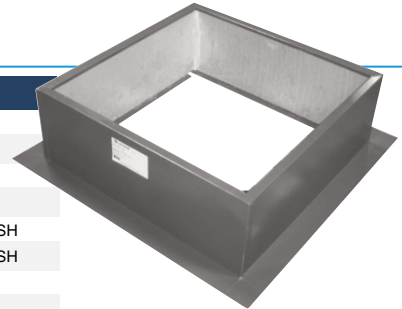
For UL762 the curb must be vented and be a minimum of 40" from roof to outlet - use RCGV curbs (below)

ROOF CURBS FOR RTA, RB OR RD

- 16 gauge galvanized or painted steel construction
- RC are insulated, painted, with 3" flanges and damper shelf
- RCG are non-insulated, galvanized, with 1 3/4" flanges
- RCGI are insulated, galvanized, with 1 3/4" flanges
- All are 10 1/4" high
- Non-vented
- Shipped fully assembled

ROOF CURBS FOR RTA, RB & RD SERIES (Non-vented) 10 1/4" High

Part # Painted	Part # Galv (Non-Insulated)	Part # Galv (Insulated)	Curb OD Dimension sq	Curb fits Models
RC18	RCG21.625	RCGI21.625	21.6"	RTA18
RC24	RCG29.125	RCGI29.125	29.1"	RTA-RB-RD24
RC30	RCG35.125	RCGI35.125	35.1"	RTA-RB-RD30
RC36	RCG41.125	RCGI41.125	41.1"	RTA-RB-RD36
RC42	RCG47.125	RCGI47.125	47.1"	RTA-RB-RD42-RTASH
RC48	RCG53.125	RCGI53.125	53.1"	RTA-RB-RD48-RTASH
RC54	RCG59.125	RCGI59.125	59.1"	RTA-RB54-RTASH
RC60	RCG67.125	RCGI67.125	67.1"	RTA-RB60



VENTED ROOF CURBS FOR ALX, SB-SBRM & SD-SDUB

- UL762 requires vents and minimum 40" from roof to outlet
- Curb height varies to meet UL762 (see table below)
- RCGV are 18" high
- RCGVL are 12" high
- RCGVH vary to meet UL762
- 18 gauge galvanized steel construction
- 1 3/4" flanges
- Non-insulated
- Shipped fully assembled



(Vented) RCGV ROOF CURBS FOR ALX, SB-SBRM & SD-SDUB SERIES

Part #	Part #	UL762 Curb Height	Curb OD Dimension sq	Curb Fits Models
Vented 18" high (RCGV)	To Meet UL762			
Vented 12" high (RCGVL)				
RCGV17.5 / RCGVL17.5	RCGVH17.5	27"	17.5"	ALX105, ALX120, SD-SDUB-10, SD-SDUB-12
RCGV19.5 / RCGVL19.5	RCGVH19.5	25"	19.5"	ALX135, ALX150, SB-SBRM-13, SD-SDUB-30, SD-SDUB-33, SD-SDUB-50, HRE-13, ALX105-C2, ALX105-C2
RCGV23.25 / RCGVL23.25	RCGVH23.25	18"	23.25"	ALX165, SB-SBRM-15, SD-SDUB-85, HRE-16, ALX135-C2, ALX150-C2, ALX180-C2
RCGV26.5 / RCGVL26.5	RCGVH26.5	18"	26.5"	ALX180, SB-SBRM-18, HRE-20, ALX165-C2
RCGV31.5 / RCGVL31.5	RCGVH31.5	18"	31.5"	ALX210, ALX245, SB-SBRM-24, HRE-24
RCGV38.5 / RCGVL38.5	RCGVH38.5	18"	38.5"	SB-SBRM-30, ALX210-C2, ALX245-C2, ALX300