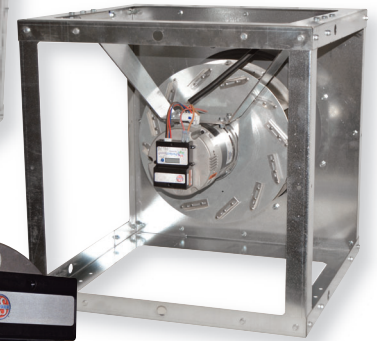
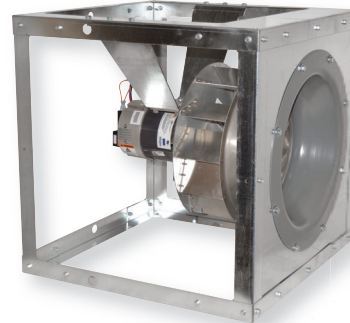
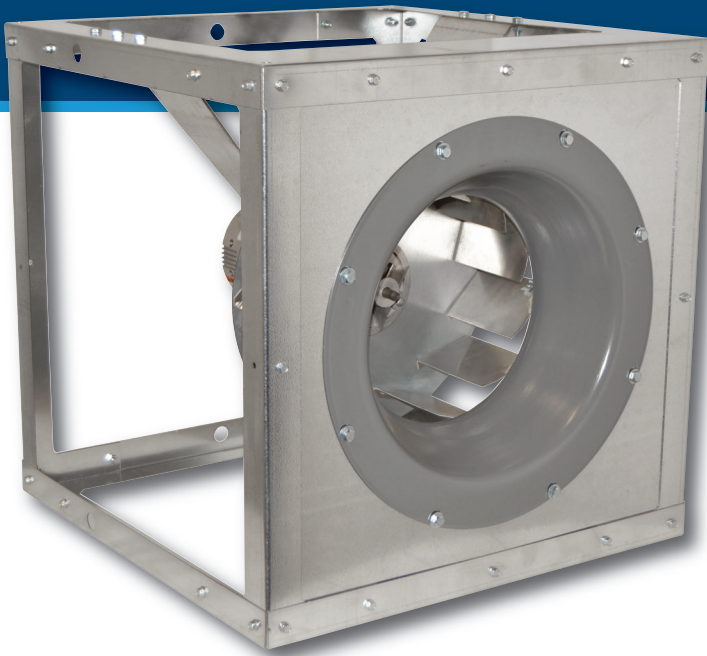


# PMD SERIES

## Backward Inclined Direct Drive Plenum Fan



**\*NON ETL MODEL**  
CURRENTLY ONLY AVAILABLE  
IN CANADA

## FEATURES

- Available in 10", 12", 13", 15", 16" & 18"
- High efficiency aluminum wheel
- Junction box
- High Efficiency EC Motor
- 0-10VDC onboard potentiometer
- LED display for RPM and percent of demand
- 120/208-230 V 1Ø
- No separate transformer
- 300 RPM minimum
- Flexible user interface
- Ideally suited for plenum arrays

## PERFORMANCE SPECIFICATIONS

MODEL	TYPICAL MAXIMUM CFM @ SP							RPM
	1/4"	1/2"	3/4"	1"	1 1/4"	1 1/2"	HP	
PMD105	1150	1000	825	550	--	--	1/3 HP	1800
PMD120	1725	1575	1425	1200	1025	500	1/2 HP	1800
PMD135	2575	2400	2250	2000	1850	1400	3/4 HP	1800
PMD150	3300	3100	2825	2450	2200	1900	1 HP	1800
PMD165	3750	3350	2950	2550	2250	1900	1 HP	1500
PMD180	4200	3650	3250	2550	--	--	1 HP	1200

Power rating (BHP) does not include transmission losses. Performance certified is for installation type B - Free inlet, Ducted Outlet. Performance ratings do not include the effects of appurtenances (accessories).  
CFM values listed above are summarized for convenience.

**FOR FAN CURVES & FULL PERFORMANCE DATA, CONSULT OUR DELAIR SOFTWARE. DOWNLOAD DELAIR @ [WWW.CANARM.COM/DELAIR](http://WWW.CANARM.COM/DELAIR)**

## DIMENSIONS

MODEL	DIMENSIONS (IN)			
	L	W	H	A
PMD105	17 1/8	17 1/8	17 1/8	14 13/16
PMD120	20	20	20	18 13/16
PMD135	22	22	22	20 13/16
PMD150	24 1/2	24 1/2	24 1/2	23 1/4
PMD165	26 3/4	26 3/4	26 3/4	24 3/4
PMD180	29 5/8	29 5/8	29 5/8	27 3/8

