



GREENHOUSE / GROW OP PRODUCTS

Good things grow for those who ventilate!

Growers understand the importance of environmental consistency for plant health as well as air movement to foster pollination. Canarm's complete line of ventilation products are ideal for commercial operations or personal greenhouses and grow ops.



Platinum
member

www.canarm.com



WMKD / PBKD COMMERCIAL CIRCULATING FANS

- Commercial duty circulating fans (Knock Down).
- Painted aluminum blades.
- Standard OSHA guard.
- Motors are thermally protected.
- Available in 24" and 30" stationary and oscillating models.
- Packaged in one box, complete with mounting accessories.
- Complete with 10', 120V grounded plug.

CIRCULATING FANS



PBKD

WMKD

CA INDUSTRIAL GRADE CIRCULATING FAN HEADS & ACCESSORIES

- Rugged, high performance model.
- Available in 24" & 30" sizes.
- 1/4 HP, 3 speed, totally enclosed ball bearing motor with thermal overload protection.
- Fan motor RPM - 1100/950/850.
- Available with oscillating motor for the pedestal and wall models.
- Heavy gauge aluminum, well balanced fan blades.
- Air stream adjustable in all directions.
- Complete with 10', 120V grounded cord set.
- Attractive powder coated front and rear guards, meet OSHA standards.
- **Fan head and accessory sold separately.**



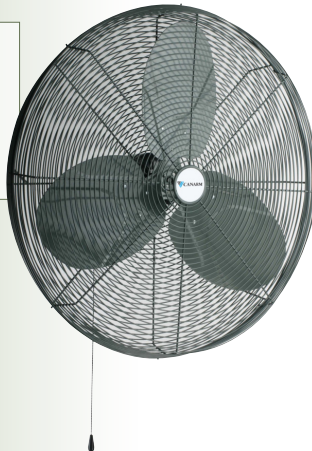
CFKPB



CFCM



CFWB



HAF HORIZONTAL AIRFLOW FANS

- 18" horizontal air flow fan
- Available in white & chrome
- Totally enclosed variable speed motor
- Zinc dipped OSHA guard
- Suitable for wet locations
- 115V, 8 foot grounded cord & plug
- White powder coated guard with wide spacing also available



HAF18



HAF18-ZO



WET
LOCATION

UP TO 4000
CFM

HVF HIGH VELOCITY FLOOR/TABLE FANS

- Painted silver finish.
- 3 speed dial control.
- Sturdy aluminum blades.
- 12", 18" and 20" sizes available.
- Complete with 6' 120V grounded cord set.
- Convenient carrying handle/cord wrap.
- Ergonomic tilt adjustment knobs.
- Complete with wall mount bracket.
- OSHA guard.



DRY
LOCATION

1600 - 4000
CFM

HVR ROUND PORTABLE FANS

- Heavy 18 gauge, powder coated steel housing.
- Factory balanced blade.
- Permanently lubricated, totally enclosed motors.
- 2 speed dial switch on 24" & 36" models.
- Fan drum pivots up for directional control with strong locking mechanism.
- Complete with 10', 120V grounded cord.
- Powder coated front and rear guards meet OSHA standards.
- Heavy duty wheel kit makes this fan easy to move.
- 5" (HVR24) and 8" (HVR36) rubber wheels with steel hubs.
- Complete with conversion kit for ceiling mount.



7000 -12000
CFM

**CIRCULATING
FANS**

CA AG BASKET TYPE CIRCULATING FANS

- Variable speed, totally enclosed, sealed ball bearing, thermally protected, high efficiency, dual voltage, 115/230V.
- High volume, corrosion resistant blades.
- Polyester powder coated, steel wire guard to OSHA specifications
- Galvanized Steel adjustable three way mount. Mount to wall, ceiling or overhead joist. Fan can pivot down and swivel left and right for pin-point control of air stream.
- Fan head comes pre-assembled to guarantee fan blade is in proper location on motor shaft for maximum performance and safety within the guard.
- Can operate with Canarm's manual or automatic thermostatic controls (sold separately)
- Suitable for buildings with low ceilings



5300-8300
CFM

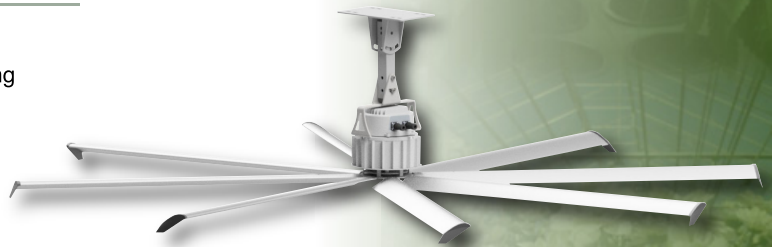
AG SERIES AGRICULTURAL FAN

- Built-in controller for smooth speed regulation.
- Fan's casing is made of high quality UV-resistant plastic (flame rating - 5VA)
- Fitted with backward curved centrifugal impeller driven by powerful sealed external rotor motor with lifelong bearings and thermal protection.



HVLS CIRCULATING FANS

- Operates quietly to keep air moving throughout the facility.
- Higher average wind speeds than traditional cooling fans.
- Automatic controls allow the fan to operate when necessary reducing energy costs.
- Fans are ceiling mounted out of the way of moving equipment.
- Low power consumption for CFM delivery ratio.
- No drive belts or belt tighteners to maintain.
- Electrical controls of the HVLS fans, can be located in one central lockable location.
- Less wiring & labour required to install HVLS fans over traditional cooling fans.
- Highest CFM per W on the market (523 CFM/W on the 24' Tri-Lite and 392 CFM/W on the 16' fan).



EXHAUST FANS



CBS - complete with cabinet/guard and shutter



SLS - complete with front sleeve and shutter



SLB - complete with rear sleeve and back guard,



Shown as panel



STANDARD EXHAUST FANS

- Available in 8" to 36" sizes.
- Single, two and variable speed models are available.
- All fans use a totally enclosed, thermally protected motor.
- The rugged steel welded box housing has a durable powder coated finish.
- Aluminum louver shutters are supported by long life nylon bushings (30" and 36" have PVC louvers).
- 8" - 24" models have heavy wire chrome plated OSHA guards on intake side of fan. 30" & 36" models have grey powder coated guards.
- All fans are shipped completely assembled.

AX SHUTTER MOUNTED FANS

- Sturdily constructed from all-aluminum extrusions.
- 8" - 24" models have heavy wire chrome plated OSHA guards on intake side of fan. 30", 36" & 42" models have grey powder coated guards.
- Totally enclosed air over motor with overload protection.

XB BELT DRIVE WALL FANS

- Heavy gauge steel fan panel with deep spun and flared venturi for maximum efficiency.
- Heavy gauge welded steel motor and bearing supports.
- Heavy duty cast iron pillow block bearings.
- TEFC motors are standard.
- Available with CBS, SLS or SLB

HVA - BELT DRIVE WALL FANS

- Heavy gauge steel fan panel with deep spun and flared venturi for maximum efficiency.
- Heavy gauge welded steel motor and bearing supports.
- Balanced cast aluminum airfoil blades (24" - 48").
- Electro anti-static glass reinforced nylon blades available in 54" - 60".
- Heavy duty cast iron pillow block bearings.
- TEFC motors are standard.
- Available with CBS, SLS or SLB

FGI FIBERGLASS FANS

- The patented design provides excellent performance without a cone.
- All fans are come completely assembled and are tested before shipping.
- Chop & Spray design with smooth inside for improved cleaning.
- Self draining, sloped housing is quick and easy to clean, which reduces maintenance costs.
- T-Mount belt drive system provides quick, easy access to motor and blade.
- Belt drive units are supplied complete with belt tensioner and easily accessible, high quality rubber belt.
- All fans have smooth operating, easy to clean, tie-bar poly shutters with stainless steel frame.
- 36" and 50" belt drive fans
- 12", 18", 24" and 36" direct drive fans

STAINLESS STEEL PANEL FANS

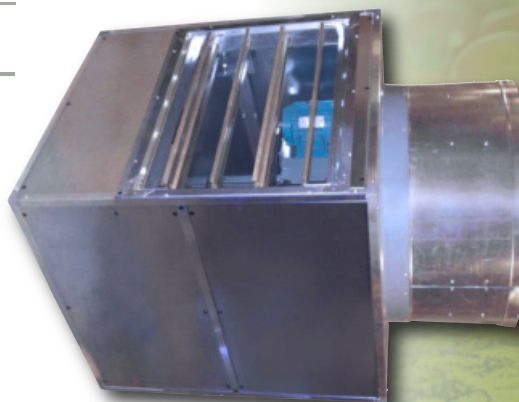
- Used to pressurize ducts.
- Available in 12", 16", 24" and 36" sizes.
- Dual voltage, totally enclosed, variable speed (except for 36"), high efficiency ball bearing motors with thermal overload protection.
- Canarm's exclusive "Rotair" air foil polypropylene blade is designed to deliver high volumes of air quietly and efficiently.
- The single speed 36" model has a high performance galvanized blade.
- Stainless steel panel will not rust and has an 4" extension to allow the installation of an air bag.
- All fans are shipped completely assembled.



**DUCT WORK
FANS**

JFHVA AIR MAKE UP JET FANS

- Designed to be used with distribution bags on tubes supplied by others.
- Sturdily constructed of galvanized steel with cast aluminum fan blades.
- Outlet duct with straightening vanes to attach air tube.
- TEFC motors are standard.
- Adjustable motor base.
- Large access door hinged and latched on bottom (all models).
- Face and bypass dampers (FBC and FOC optional construction).
- Modulating damper motors (FBC and FOC optional construction).
- Transformers & Remote thermostats (FBC and FOC optional construction).
- NEMA control box enclosure (FBC & FOC optional construction).
- All face and bypass damper linkage enclosed inside cabinet (FBC).
- Optional construction available.



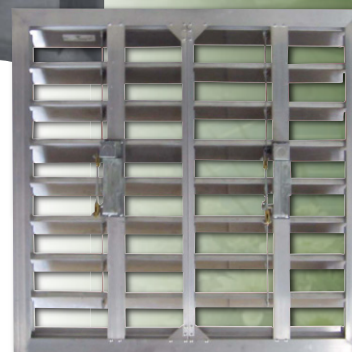
DAMPERS

GRAVITY & MOTORIZED BACKDRAFT DAMPERS

- Sturdily constructed from all-aluminum extrusions.
- Positive seal keeps leakage less than 1%.
- Roll form blades or extruded aluminum blades.
- Available in any combination of width and height.

MOTORIZED BACKDRAFT DAMPERS

- Damper motor factory installed
(24V, 115/230V must specify at time of order).
- Maximum 30.25 square feet per motor.



INLINE VARIABLE SPEED DUCT FANS



VK U SERIES



ERVs / HRVs



DFRC-ES SERIES CIRCULAR DUCT FANS

- Available in 4", 5", 6", 8", 10" and 12" diameters.
- Quiet and efficient backward curved impeller
- Powerful, efficient external rotor motor
- Speed controllable with Canarm MC series controls
- High flow against high static pressure
- Remove noise from main living area by mounting remotely
- Quick and easy installation.

VK /VK U SERIES INLINE CENTRIFUGAL FANS

- Sizes available from 4" - 12 3/8".
- High static pressure applications.
- Backward curved centrifugal impeller.
- Quiet external rotor motor with thermal overload protection.
- Ideal for long duct runs.
- Vibration & maintenance free operation.
- Energy efficient.
- Corrosion resistant.
- UV resistant, UL94 certified plastic
- Pre-wired and supplied with mounting bracket for easy installation.
- Available with optional integrated speed control.

TURBO TUBE SILENT SERIES

- Quiet Operation: 0.6 – 2.5 Sones.
- High Performance - up to 327 CFM.
- Energy Efficient - 22 – 64 W.
- Duct Compatibility: 4", 5", 6".
- Compatible with high pressure system.
- Double Speed capacitor motor with thermal overload protection.
- Long-life ball bearing (up to 40,000 hours).
- Built-in 2-speed control switch & power cord.
- Rotary and removable central body for easy installation & maintenance.
- Compact size for limited spaces.
- Lightweight, durable and UV resistant plastic case (Flame rating - 5VA).
- Vibration free operation.
- Corrosion resistant.
- 5 year warranty.

BRIG HRV 120/170 & 200/300

- Multi room total recovery ventilator
- Efficient centralized heat recovery ventilation
- Cross flow core with SRE up to 85%
- Silent operation
- Replaceable filters
- Simple installation and maintenance
- Compatible with 6" and 8" air ducts
- Electronic defrost protection

VUT 350 H (HRV)

- Light commercial - air handling unit designed for air filtration
- Cross flow heat recovery
- Aluminum plates
- Core can be replaced for different seasons to prevent freezing
- Sound insulation
- Heat recovery efficiency of up to 88%
- Multiple mounting positions
- Motor thermally protected

KE SERIES DIRECT DRIVE RADIAL BLADE BLOWERS

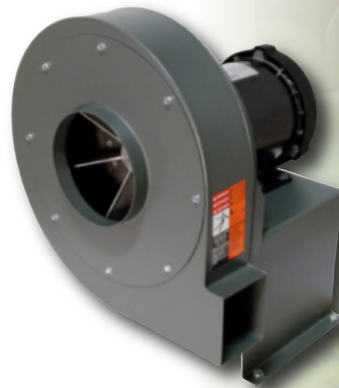
- Wheels are constructed of heavy cast aluminum with straight radial blades.
- Wheels are self cleaning, dynamically balanced and designed for efficient operations.
- Welded 16 gauge steel housings and motor bases.
- TEFC motors are standard.
- Comes as clockwise rotation, bottom horizontal discharge (can be rotated at 45° increments).



BLOWERS

PW SERIES DIRECT DRIVE PRESSURE BLOWER

- Wheels are constructed of heavy cast aluminum with straight radial blades.
- Wheels are self cleaning, dynamically balanced and designed for efficient operations.
- Welded 16 gauge steel housings and motor bases.
- TEFC motors are standard.
- Comes as clockwise rotation, bottom horizontal discharge (can be rotated at 45°+ increments).



D SERIES DIRECT DRIVE FORWARD CURVED BLOWER

- Wheels are forward curved steel, dynamically balanced and designed for efficient operation.
- Welded 16 gauge steel housings and motor bases.
- TEFC motors are standard.
- Comes as clockwise rotation, bottom horizontal discharge (can be rotated at 45° increments).

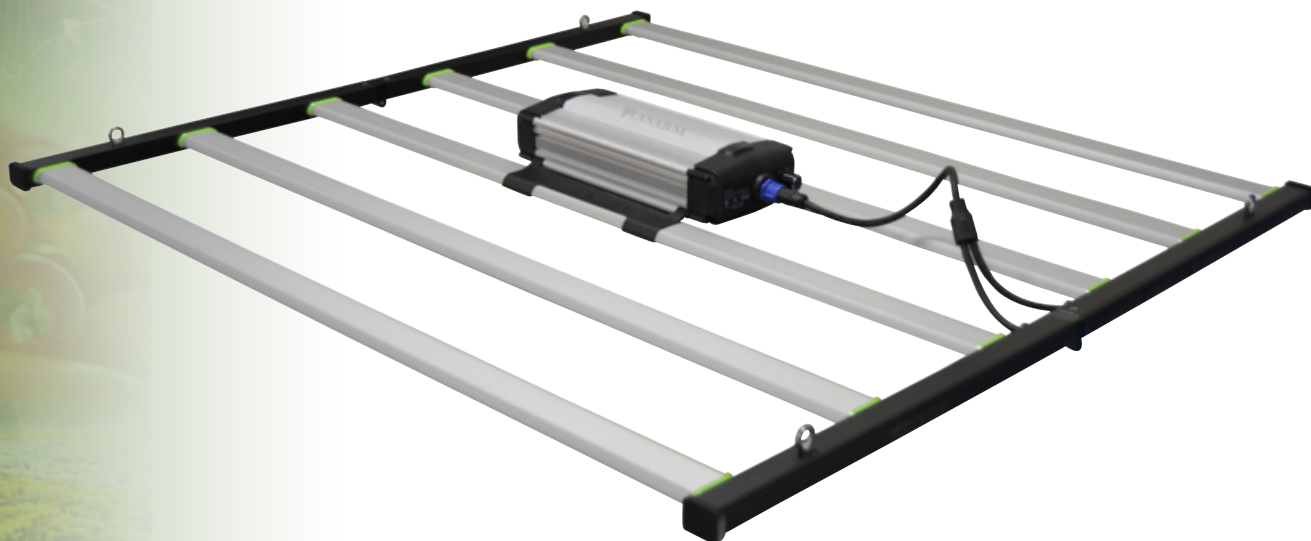


GROW LIGHTS

GREENCHOICE LED GROW LIGHT



- Electronic horticultural LED fixture with six LED light bars.
- Can be used in DAMP environments
- Slim, compact design
- Foldable up to 180 degrees
- Easy to install
- High efficacy - more than 50% higher in PPFD compared with HID lamps
- IP66 rated, waterproof design



GREENCHOICE GROW BULB



- Long life bulb
- Rated for high humidity
- Low heat & low energy
- 120V, 15.5W



SUITABLE FOR
DAMP
LOCATIONS



DIMMABLE



LIFE HOURS
15,000



LED HIGH BAY LIGHT

- High efficiency – 150 lumens per watt
- IP66/4X certified
- Aluminum alloy heat sink
- 0-10V dimmable
- 39" (1M) loose wire cords for power supply and 0-10V dimming



HBLED-PT100W5000



HBLED-PT150W5000

**GENERAL
LIGHTING**

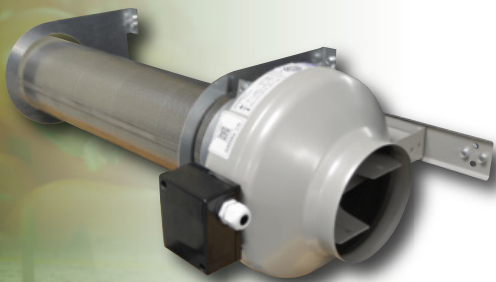
LED VAPOR TIGHT LIGHT

- This unit is designed to replace traditional fluorescent T5 and T8 fixtures.
- IP65 rating
- **Material:** PC housing, stainless steel clips, silicon perimeter gasket, aluminum heatsink, PC lens, Isolated LED driver
- Aluminum heatsink and iron surrounded LED driver for maximum heat dissipation, prolonging the fixture lifespan.





SCT-IDB12 with 16 filters shown



SCT-DFRC6ES with 1 filter

CARBON FILTERS



SCENTINEL-IDB

- Use as an odour treatment system for recirculating, redistributing or exhausting air.
- Durable galvanized, steel construction.
- Delhi blowers will not "surge", "hunt" or "stall."
- Ideal for indoor applications.
- Optional variable pitch motor pulley permits field adjustment (typically + or - 15%) to match air delivery needs.
- Quiet forward curved blowers operate at 1/2 the RPM of other inline blowers.



Advanced high efficiency filter system.

Includes modular corrosion resistant canister filters with maximum absorbent media.

CARBON FILTERS

- Reduces odors and controls emissions from greenhouses and other growing applications. The ambient air is circulated through the activated carbon filter and returned to the greenhouse (scrubbing) or discharged outside (filtering).
- High efficiency particulate filtration of the 2, 3 & 4- ply panels with superior performance of gas and odor absorption.
- Utilizes carbon for gaseous pollutant control
- Various sizes and options available

K-KONTROL THERMOSTATS

- Single KJ16110, portable single KP16110 and two KT16110 stage models.
- Reliable Johnson thermostats
- Moisture proof box
- Stainless steel coil and portable hanger
- Use anywhere portable model - simply plug control into outlet and then the device into the control
- Two stage model for two stages of heating and/or cooling or two speed fans 392 CFM/W on the 16' fan).

SUNNE THERMOSTATS

- Single stage thermostat for heating or cooling
- NEMA 4 enclosure
- Larger, easy read, 40 - 100° F dial
- Multi position mounting
- Higher amperage rating
- 16 amp rating @ 120 V & 12 amp rating @ 240 V
- Stainless steel coil

RANCO THERMOSTATS

- Single and two stage models
- Easy to read LCD display
- Programmable differential (1 to 30° F)
- Wide operating range (-30 to 220° F)
- NEMA 4 enclosure
- 8' temp probe included (extendable to 400')
- User selectable F/C°
- Lockout switch
- Two stage model for two stages of heating and/or cooling or two speed fans

MSC-4 PHASON VARIABLE SPEED CONTROL

- One variable speed output (12.5 A at 120/230 VAC general purpose resistive, 9 FLA at 120/230 VAC PSC motor)
- Minimum/maximum calibration
- ON/OFF switch
- May also be used as a light dimmer to power up to five, 250 Watt brooder lamps
- 115 or 230V AC operation

MTC-4C PHASON VARIABLE SPEED CONTROL

- One variable stage (10 A general-purpose (resistive) load at 120/230VAC, 7 FLA at 120/230VAC, PSC motor)
- Two control knobs, one for adjusting temperature, one for adjusting idle speed
- An internal shunt for adjusting minimum ON/OFF speed
- Fixed 2°F off set-back for auto shut off
- 6°F differential temperature
- Extendable temperature sensor
- 115 or 230V AC operation

MC SERIES MANUAL VARIABLE SPEED CONTROL

- Minimum speed adjustment screw.
- Designed to fit a standard 3" x 5" electrical box.
- Mount in a dry location.
- Also available in 230V/1/60HZ
- Ideal for use on variable speed SD Standard Exhaust fans, AX, DFRC and AXC fans (not for use with single speed motors).
- Not for use on PLF/FG/PF/CA-AG/TF fans.



CONTROLS



Platinum member



CANARM LTD. - Corporate Office & HVAC Manufacturing
2157 Parkedale Ave., PB Box 367 Brockville, ON
Canada K6V 5V6
Tel: (613) 342-5424
Fax: 1-800-263-4598

Arthur Agricultural Manufacturing Facility
#7686 Concession 16, RR 4 Arthur, ON
Canada N0G 1A0
Tel: (519) 848-3910
Fax: (519) 848-3948

For complete contact information and additional product details, please visit
www.canarm.com

CANARM LTD. - USA Warehouse
808 Commerce Park Drive
Ogdensburg, New York, USA 13669
Tel: 1-800-267-4427
Fax: 1-800-263-4598

NOVEMBER 2022

Montreal Distribution Center
2555 Rue Bernard Lefebvre
Laval, QC H7C 0A5 Canada
Tel: 450.665.2535
Fax: 450.665.0910