

G SERIES

Double Inlet Belt Drive Blowers



FEATURES

- Sleeve or ball bearing models available.
- Base feet can be mounted for various discharge positions.
- Motor mounting hardware included with each blower.
- Corrosion resistant G90 galvanized steel blower housing.
- Capacity range 200 to 8000 CFM.
- The blower wheel has an exclusive centre disc which allows blowers to be used safely at speeds well above any normal requirement.
- Blower housings have extruded holes to give greater holding power for mounting base sides and motor bracket.
- Matte finish zinc coated wheel and cut-off baffle.
- Shaft dimensions and finish are carefully controlled to ensure quiet, trouble free operation.
- Available with permanently lubricated sleeve bearings suitable for operation in ambient temperatures of +30 to +120 deg. F and under 1000 RPM OR ball bearings with a sealed lifetime supply of lubricant for operation in ambient temperatures of -65 to +250 deg. F (optional).
- Shafts for ball bearing models have keywayed ends. Sleeve bearing model shafts have flats.

PERFORMANCE SPECIFICATIONS

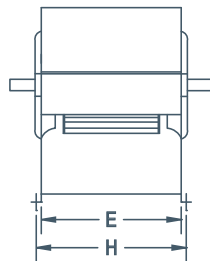
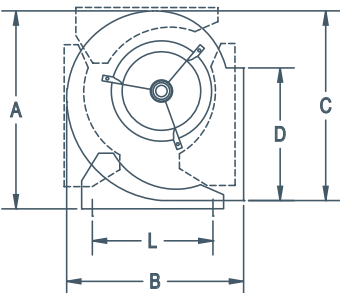
MODEL	1/2" SP				1" SP				1 1/2" SP				2" SP				2 1/2" SP			
	CFM	BHP	FEI	FE _{Pact} (kW)	CFM	BHP	FEI	FE _{Pact} (kW)	CFM	BHP	FEI	FE _{Pact} (kW)	CFM	BHP	FEI	FE _{Pact} (kW)	CFM	BHP	FEI	FE _{Pact} (kW)
G7-5	1600	1.91	0.49	1.77	1500	1.85	0.56	1.72	1400	1.79	0.62	1.67	1400	2.00	0.66	1.85	1300	1.85	0.74	1.72
G7	2200	1.85	0.66	1.72	2100	1.87	0.74	1.74	2000	1.90	0.81	1.76	1900	1.95	0.86	1.80	1800	1.98	0.91	1.83
G9-7	2700	1.83	0.78	1.70	2600	1.87	0.88	1.74	2500	1.92	0.97	1.78	2400	1.96	1.05	1.81	2200	1.88	1.11	1.05
G9	3200	1.95	0.77	1.80	3000	1.89	0.90	1.75	2800	1.88	1.00	1.74	2600	1.95	1.04	1.80	2300	1.90	1.07	1.76
G10-8	3200	1.88	0.81	1.74	3100	1.97	0.93	1.82	2900	1.95	1.02	1.80	2700	1.95	1.10	1.80	2400	1.90	1.13	1.76
G10	3700	1.90	0.85	1.76	3500	1.94	0.97	1.80	3300	2.00	1.07	1.85	3000	1.98	1.13	1.83	2700	1.96	1.18	1.81
G12-9	4300	1.99	0.98	1.84	3900	1.91	1.10	1.77	3600	1.97	1.16	1.82	3200	1.95	1.20	1.80	2900	1.95	1.25	1.80
G12	4600	1.96	0.90	1.81	4300	2.00	1.05	1.85	3800	1.92	1.16	1.78	3400	1.97	1.20	1.82	2900	1.96	1.19	1.81
G15-10	4900	1.95	0.93	1.80	4600	1.96	1.11	1.81	4200	1.95	1.24	1.80	3700	1.94	1.30	1.80	3100	2.00	1.23	1.85
G15	6900	2.90	0.95	2.61	6400	2.97	1.07	2.67	5800	2.96	1.16	2.66	5200	2.91	1.24	2.62	4600	2.96	1.24	2.66
G18-13	8800	4.88	0.82	4.27	8300	4.95	0.92	4.33	7900	4.87	1.06	4.27	7400	4.91	1.13	4.30	6800	4.93	1.17	4.32
G18	8700	2.95	1.06	2.65	7700	2.98	1.17	2.68	6900	3.00	1.27	2.70	5800	3.00	1.26	2.70	3600	2.95	0.94	2.65



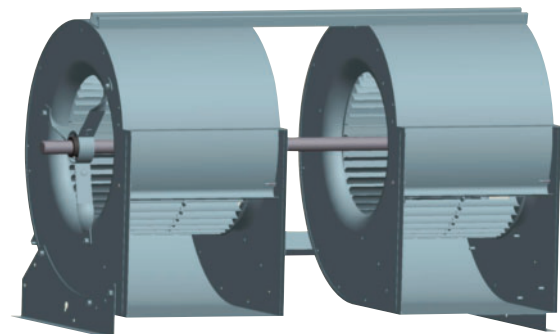
View FEI charts
canarm.com/fei-g

FOR FAN CURVES & FULL PERFORMANCE DATA, CONSULT OUR DELAIR SOFTWARE. DOWNLOAD @ WWW.CANARM.COM/DELAIR

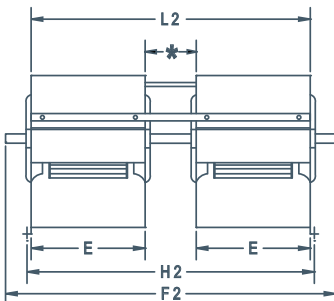
DIMENSIONS



Call for
pricing &
availability.



"G" Series Twin Units - * Spacing will determine "L2" and "F2" dimensions.



MODEL	A	B	C	D	E	H	L	SHAFT DIAMETER	WHEEL DIAMETER	WHEEL WIDTH	UNIT WEIGHT (lbs) without motor & drives
G7-5	14 5/16"	12 5/16"	12 11/16"	8 1/4"	6 7/8"	7 7/8"	9 5/8"	3/4"	8 1/16"	4 15/16"	13
G7	14 5/16"	12 5/16"	12 11/16"	8 1/4"	9 3/16"	10 3/16"	9 5/8"	3/4"	8 1/16"	7 3/16"	15
G9-7	16 15/16"	15 1/16"	15 9/16"	10 1/4"	9 3/16"	10 3/16"	11 3/4"	3/4"	10 1/4"	7 3/16"	19
G9	16 15/16"	15 1/16"	15 9/16"	10 1/4"	11 13/16"	12 13/16"	11 3/4"	3/4"	10 1/4"	9 9/16"	21
G10-8	19"	16 3/4"	17 3/8"	11 3/8"	10 1/2"	11 1/2"	13 3/8"	3/4"	11 1/8"	8 1/16"	23
G10	19"	16 3/4"	17 3/8"	11 3/8"	13 1/8"	14 1/8"	13 3/8"	3/4"	11 9/16"	10 13/16"	25
G12-9	22 1/8"	19 1/2"	20 5/8"	13 7/16"	12 1/4"	13 1/4"	16 1/8"	3/4"	12 7/8"	9 9/16"	29
G12	22 1/8"	19 1/2"	20 5/8"	13 7/16"	15 5/8"	16 5/8"	16 1/8"	3/4" or 1"	12 7/8"	12 13/16"	34
G15-10	25 3/4"	22 11/16"	24 1/4"	15 7/8"	14 11/16"	15 11/16"	19 1/2"	1"	15 1/2"	10 13/16"	48
G15	25 3/4"	22 11/16"	24 1/4"	15 7/8"	18 5/8"	19 5/8"	19 1/2"	1"	15 1/2"	15 1/16"	56
G18-13	30 1/2"	27"	29"	18 7/8"	17 3/8"	18 3/8"	24"	1"	18 1/2"	15 1/16"	67
G18	30 1/2"	27"	29"	18 7/8"	21 7/8"	22 7/8"	24"	1"	18 1/2"	18 1/2"	87