



PUTTING INNOVATION TO WORK



## **ENERGY FREE COVERED POLY WATERER – EF88C**



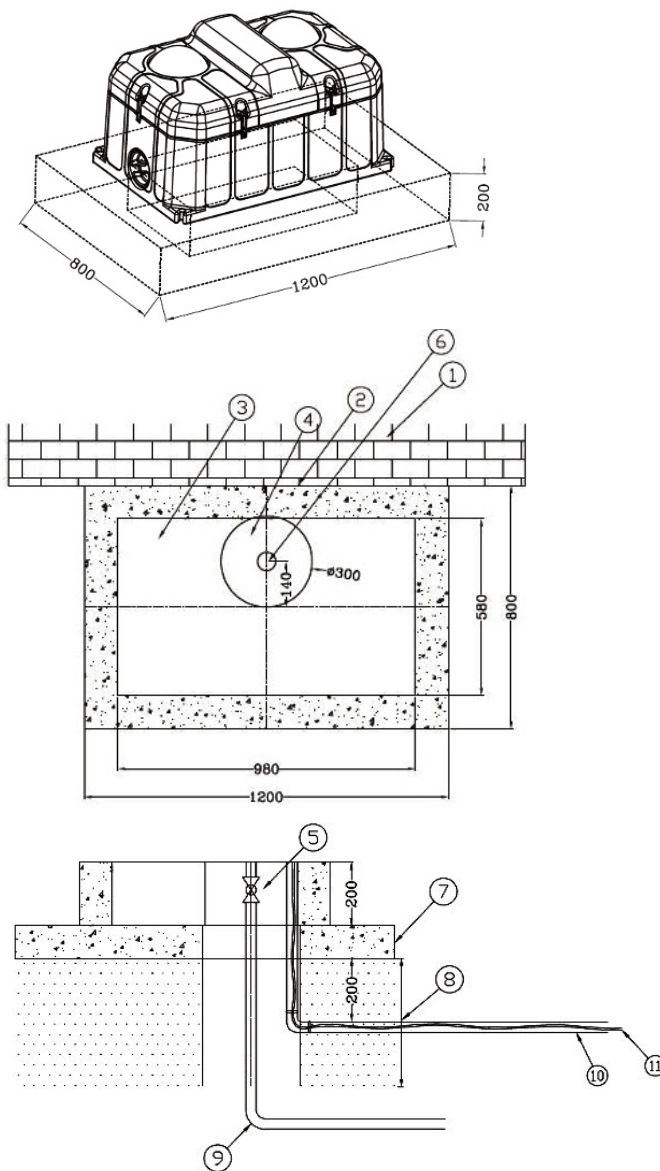
7686 16 Line, Arthur, ON. N0G 1A0      [www.canarm.com](http://www.canarm.com)  
Email: [agsales@canarm.ca](mailto:agsales@canarm.ca)      Tel: 1-800-263-5314      Fax: 519-848-3948

Congratulations and thank you for purchasing the Energy Free Covered Poly Waterer – EF-88C.

## FEATURES

- Made from a heavy duty, impact resistant polyethylene
- One shot roto-molded with injected foam insulation
- Insulated cover with floating ball to keep water from freezing
- Available in a single (40 head) or double (88 head) options
- Great for use where power is not available – uses the geothermal ground heat only
- The heat from the consistent flow of ground water, that averages 7°C (45°F), helps to keep the inside from freezing

## INSTALLATION INFORMATION



- 1 Water retaining wall
- 2 Slab Size 48" x 32" x 8"
- 3 Concrete internal foundation 38.5" x 22.5"
- 4 Ground tube for waterline – 12" round
- 5 Install a ball valve shut off on your incoming waterline – not included. To attach to the bowl intake you require a 1" Male Hose end after the ball valve.
- 6 The top of the 3/4" adapter needs to be the same level as the concrete slab
- 7 Ground level
- 8 Ensure ground tube and waterline are installed deeper than the frost line for your area
- 9 One inch inlet pipe, we suggest to use the international standard PPR pipe
- 10 Optional 1" electrical class pipe (if using a submersible heater or heat cable)
- 11 Optional incoming power line (if using a submersible heater or heat cable)

Note: If you use a submersible heater, the submersible heater must have a built in automatic shut off if there is no water is in the water tank. If you use heating cable, the length of the cable should exceed the inlet pipe at least 500mm.