



FLUORESCENT LIGHTING

FL-25
08/11

QUESTIONS OR CONCERNS CONTACT CANARM AT:

1-800-265-1833 (English) / 1-800-567-2513 (French) Monday through Friday 8:00 AM to 5:00 PM E.S.T.



TOOLS AND MATERIALS REQUIRED:



Phillips
Screwdriver



Pliers



Hammer

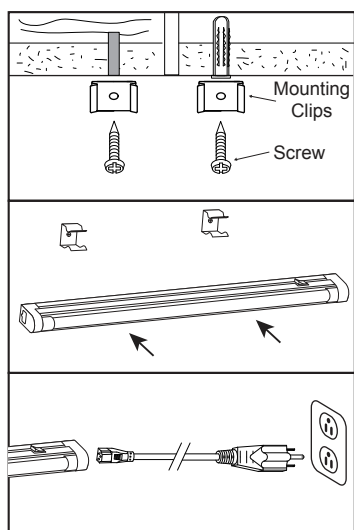


Wiring supplies
as required by
electrical code

SAFETY PRECAUTIONS:

1. TURN OFF ELECTRICAL POWER BEFORE STARTING INSTALLATION OF LIGHT FIXTURE.
2. THIS PRODUCT MUST BE INSTALLED IN ACCORDANCE WITH THE APPLICABLE INSTALLATION CODE BY A PERSON FAMILIAR WITH THE CONSTRUCTION AND OPERATION OF THE PRODUCT AND THE HAZARDS INVOLVED.
3. THIS FIXTURE IS DESIGNED FOR 120 VOLT CIRCUIT. IF UNSURE ABOUT WIRING, CONSULT AN ELECTRICIAN.
4. DO NOT CONNECT FIXTURE TO DIMMER CIRCUIT.
5. USE INDOORS ONLY. DO NOT USE IN WET LOCATIONS.
6. NOT FOR USE FOR THE FOLLOWING LOCATIONS:
 - a. ILLUMINATION OF AQUARIUMS.
 - b. RECESSED INSTALLATION IN CEILINGS OR SOFFITS.
 - c. SURFACE INSTALLATION INSIDE OR ON TOP OF FURNISHINGS SUCH AS KITCHEN CABINETS, CHINA CABINETS, OR TROPHY CASES.
7. RISK OF SHOCK: TURN OFF POWER SWITCH AND FUSE. TURN OFF POWER SUPPLY AGAIN WHEN YOU CHANGE LAMPS OR PERFORM OTHER MAINTENANCE.
8. RISK OF FIRE: DO NOT OVERLOAD CIRCUIT AND WIRING. A MAXIMUM OF 15 FIXTURES CAN BE ADDED TO OR LINKED TOGETHER IN AN EXISTING CIRCUIT.
9. WARNING: WHEN INSTALLING IN PARALLEL, LEAVE 2" DISTANCE BETWEEN EACH FIXTURE.
10. DO NOT CONCEAL POWER SUPPLY CORD INSIDE A WALL, CEILING, SOFFIT, KITCHEN CABINET, OR SIMILAR PERMANENT STRUCTURE. DO NOT RUN THE POWER SUPPLY CORD THROUGH HOLES IN WALLS, CEILINGS, OR FLOORS.
11. BULB MAY SHATTER AND CAUSE INJURY IF BROKEN. DO NOT USE EXCESSIVE FORCE WHEN INSTALLING BULB.

INSTALLATION: NOTE: Product May Not Look Exactly As Shown In Figures.



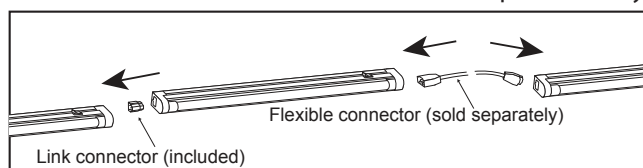
1. Mount clips on wooden studs or plastic wall anchors on drywall by wood screws. Slightly push the fixture into the clips.

2. Plug the cord FULLY into the fixture before inserting the 3-pin plug into a grounded 120 V 60Hz outlet.

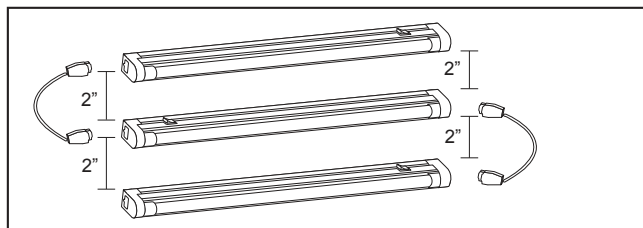
On/off switch on fixture is not available in 6 watt model.

OPTIONAL ACCESSORIES:

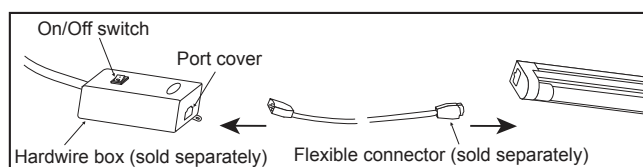
For use with Canarm's CSA certified SLIM STRIP products only.



Use link connector or flexible connector (sold separately) to connect two slim strips together.



When installing in parallel, leave 2" distance between each fixture.



For detail installation, please see the installation manual packed with accessory.