

BACKDRAFT DAMPERS

Models 3000, 3100, 3200



3100 Series

BLADE OPTION:

SR: 0.016" - 0.020" roll formed aluminum with vinyl gasket - used with fan motors under 1 HP

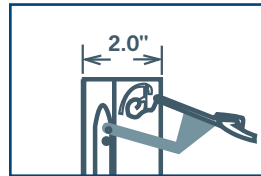
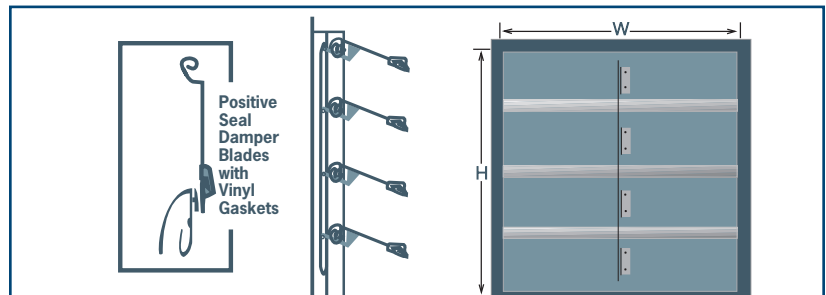
SE: 0.05" extruded aluminum with vinyl gasket - used with fan motors over 1 HP

FEATURES

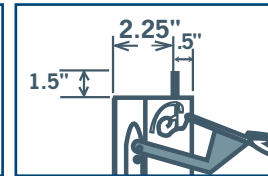
- Sturdily constructed from all aluminum extrusions.
- Roll form blades or extruded aluminum blades.
- Available in any combination of width and height.
- Less than 1% leakage.



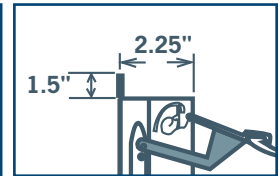
3000 & 3100 Series are undercut by 1/4".
3200 Series is cut exact.



SERIES 3000
SIDE MOUNT - NO FLANGE

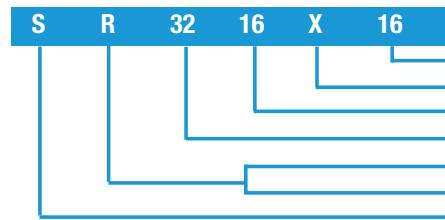


SERIES 3100
INWARD MOUNT



SERIES 3200
OUTWARD MOUNT

ORDERING METHOD FOR BACKDRAFT & MOTORIZED BACKDRAFT DAMPERS



Height 1/4" increments
Separator
Width 1/4" increments
Series 30 for 3000, 31 for 3100 or 32 for 3200
Non motorized - blade type
Motorized - motor
Shutter

R - for Roll form (fans using under 1 HP motors)
E - for Extruded (heavier blades for motors above 1 HP)
X - for 115/230V
Z - for 24V AC
Extruded blades with multi products motor is standard



3100M Series

See Controls & Thermostats section for Multi-Products replacement motors.

MOTORIZED BACKDRAFT DAMPERS

Models 3000M, 3100M, 3200M

FEATURES

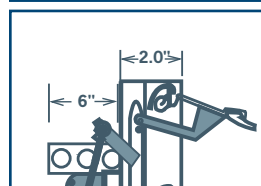
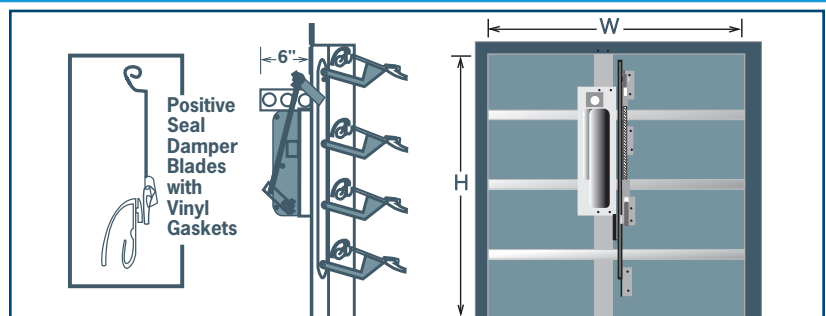
- Sturdily constructed from all aluminum extrusions
- Damper motor factory installed (24V, 115/230V - must specify at time of order)
- Maximum 8 sq. feet per motor
- Positive seal keeps leakage less than 1%
- Blades are 0.5" extruded aluminum with vinyl gasket
- Double panel available 30" and up
- Standard multi products motor



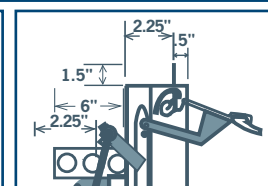
3000M & 3100M Series are undercut by 1/4".
3200M Series is cut exact.



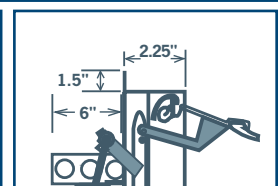
Non-standard shutters are non-returnable and cannot be cancelled.



SERIES 3000M
SIDE MOUNT - NO FLANGE



SERIES 3100M
INWARD MOUNT



SERIES 3200M
OUTWARD MOUNT

ACCESSORIES

- Bird screen
- End switch
- Special coatings
- Insect screen