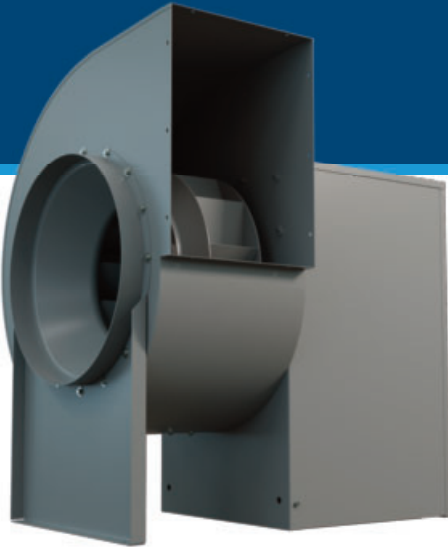


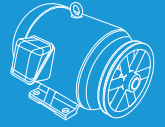
BI SERIES

Belt Drive Utility Blowers



FEATURES

- Complete range of sizes from 10" to 36".
- Full AMCA Class 1 Operation.
- Non-overloading backward inclined (BI) welded wheels.
- Aluminum wheel - (AMCA type B classification for spark resistant construction) - available as an option.
- Aluminum wheels only on BI-30 to BI-36.
- Discharge position can be field rotated to any of 8 discharge positions.
- Counter clock wise rotation is standard. Clock wise available.
- Outlet flanges on models BI-24 to BI-36.
- Temperature Ratings - without a heat slinger 250° F with a heat slinger, steel wheel 400° F, aluminum wheel 300° F.
- Motor access from 3 sides.
- Sloped motor base for ease of motor installation.
- Vented motor and drive compartment cover, with handles, for safety & weather protection.
- 16 gauge or heavier blower housing.
- Heavy duty pillow block ball bearings.



AVAILABLE WITH MOTORS & DRIVES FACTORY INSTALLED. CONSULT OUR DELAIR FAN SELECTION SOFTWARE FOR DETAILS.

PERFORMANCE SPECIFICATIONS

MODEL	1" SP				2" SP				3" SP				4" SP				5" SP				Min HP	Max HP
	CFM	BHP	FEI	FEPact (kW)	CFM	BHP	FEI	FEPact (kW)	CFM	BHP	FEI	FEPact (kW)	CFM	BHP	FEI	FEPact (kW)	CFM	BHP	FEI	FEPact (kW)		
BI-10	2300	1.92	0.71	1.78	2100	2.00	0.87	1.85	1800	1.88	1.01	1.74	1600	1.96	1.07	1.81	1300	1.95	1.07	1.80	1/2	2
BI-12*	3000	2.27	0.73	2.08	2900	2.69	0.86	2.43	2600	2.66	1.00	2.41	2400	2.79	1.09	2.52	1900	2.56	1.13	2.32	-	3
BI-13	3900	3.00	0.75	2.70	3600	3.12	0.92	2.80	3300	3.26	1.04	2.92	2900	3.20	1.13	2.86	2400	3.01	1.19	2.70	1/2	5
BI-15*	4800	3.68	0.71	3.27	4400	3.77	0.89	3.34	4000	3.90	1.02	3.45	3600	3.98	1.11	3.52	3000	3.77	1.16	3.34	-	5
BI-16	5700	4.26	0.74	3.76	5300	4.48	0.92	3.94	4900	4.70	1.04	4.12	4300	4.66	1.12	4.09	3500	4.38	1.16	3.86	3/4	7 1/2
BI-18	6200	3.88	0.82	3.44	5400	4.11	0.95	3.63	4700	4.18	1.06	3.69	3500	3.71	1.11	3.29	-	-	-	-	3/4	7 1/2
BI-20	8400	5.79	0.80	5.03	7900	5.96	1.02	5.18	7200	6.20	1.14	5.38	6400	6.29	1.22	5.45	5300	6.08	1.24	5.28	1	7 1/2
BI-22*	10000	6.51	0.81	5.63	9100	7.56	0.89	6.51	8200	7.80	1.01	6.70	6900	7.58	1.07	6.52	-	-	-	-	-	10
BI-24	11200	6.48	0.86	5.61	10100	6.85	1.05	5.92	8800	6.99	1.17	6.03	6700	6.43	1.19	5.57	-	-	-	-	1 1/2	15
BI-27	15000	10.03	0.80	8.55	14100	11.01	0.96	9.36	12800	11.39	1.08	9.67	11200	11.39	1.16	9.67	8300	9.97	1.15	8.50	1 1/2	15
BI-30-AW	18700	13.32	0.75	11.30	17400	14.07	0.93	11.90	16100	14.82	1.05	12.50	14200	14.79	1.13	12.50	11900	14.32	1.16	12.10	2	15
BI-33-AW	22600	16.07	0.75	13.50	21000	16.98	0.93	14.30	19400	17.86	1.05	15.00	17100	17.82	1.13	15.00	14300	17.22	1.15	14.50	-	20
BI-36-AW	26886	18.34	0.77	15.40	24964	19.58	0.94	16.40	22900	20.54	1.06	17.20	19836	20.20	1.14	16.90	15695	18.93	1.14	15.90	3	25

Power rating (BHP) does not include transmission losses. Performance certified is for installation type B: Free inlet, Ducted outlet. Performance ratings do not include the effect of appurtenances (accessories).

*Special Order

FOR FAN CURVES & FULL PERFORMANCE DATA, CONSULT OUR DELAIR SOFTWARE.
WWW.CANARM.COM/DELAIR

View FEI charts
canarm.com/fei-bi



Canarm certifies that the BI Series shown herein are licensed to bear the AMCA Seal. The ratings shown are based on tests and procedures performed in accordance with AMCA Publication 211 and comply with the requirements of the AMCA Certified Ratings Programme.

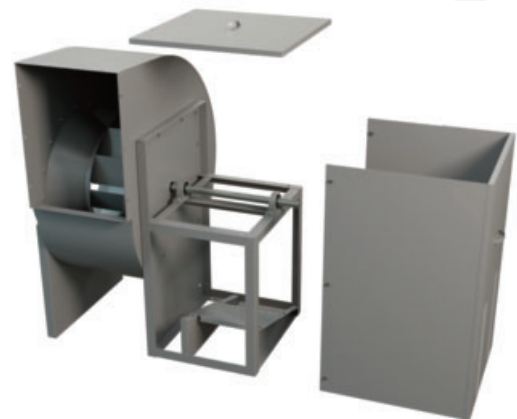
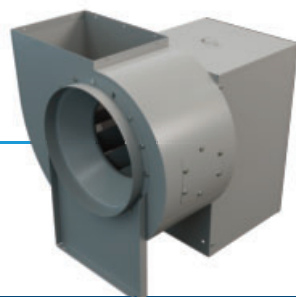
The AMCA certified ratings seal applies to air performance only. The BI Series shown herein are not approved by AMCA for FEI ratings.



RELATED MODEL

BI-RM & BI-RM-HS SERIES

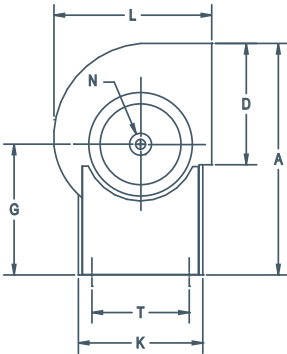
Belt Drive Utility Blowers.



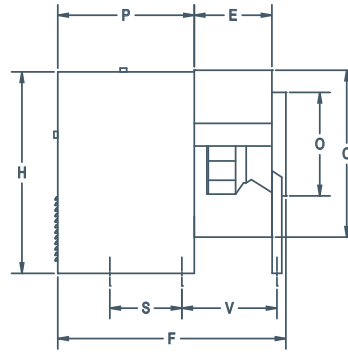
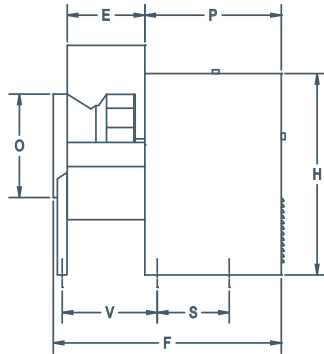
MOTOR AND DRIVE COMPARTMENT WITH COVER REMOVED TO ILLUSTRATE 3 SIDE MOTOR ACCESS AND SLOPED MOTOR BASE FOR BELT TENSIONING.

BI & BI-RM SERIES

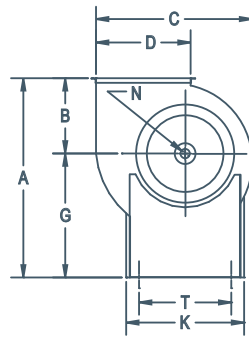
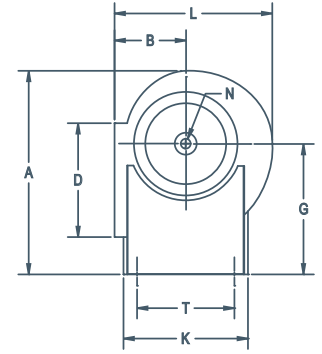
DIMENSIONS



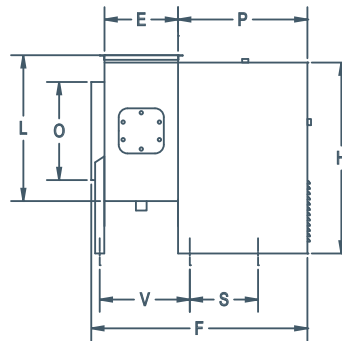
MODELS BI-10 TO BI-27
(STANDARD TOP HORIZONTAL DISCHARGE)



MODELS BI-30 TO BI-36
(STANDARD BOTTOM HORIZONTAL DISCHARGE)



MODELS BI-RM(-HS)-10 TO BI-RM(-HS)-24
(UL 762 LISTED FOR REMOVAL OF COOKING VAPOURS)



MODEL	OUTLET										SHAFT DIA.	INLET						WEIGHT (lbs) without motors
	A (STANDARD MODELS)	A (BI-RM MODELS)	B	C	D	E	F	G	H	K (CABINET WIDTH)	L	N	O	P	S	T	V	
BI-10	26 3/4"	23 5/8"	8 3/8"	19 3/16"	11 5/16"	8 1/4"	27 3/4" No Leg	15 5/8"	21 5/16"	13 1/4"	17 1/2"	3/4"	11"	17 1/4"	11 5/8"	11 1/4"	-	78
BI-12	33 3/16"	30 3/16"	9 15/16"	27 7/16"	13 1/16"	9 7/8"	33 5/16"	20 3/16"	29 1/8"	16 3/4"	20 9/16"	1"	12 7/16"	21 3/16"	11 1/2"	14 3/4"	13 1/16"	112
BI-13	34 1/2"	30 15/16"	10 3/4"	24 1/2"	14 3/8"	10 3/4"	34 1/4"	20 3/16"	29 1/8"	16 3/4"	22 7/16"	1"	14 3/8"	21 1/4"	11 1/2"	14 3/4"	14"	134
BI-15	35 15/16"	31 15/16"	11 3/4"	27 1/4"	15 13/16"	12 3/4"	36 1/4"	20 3/16"	29 1/8"	16 3/4"	24 7/8"	1"	15 7/8"	21 3/16"	11 1/2"	14 3/4"	16"	140
BI-16	39 7/16"	34 11/16"	12 11/16"	29 15/16"	17 1/2"	13 1/8"	36 5/8"	22"	30 15/16"	16 3/4"	26 15/16"	1 3/16"	17 3/8"	21 1/4"	11 1/2"	14 3/4"	16 1/2"	162
BI-18	41 5/16"	35 7/8"	13 13/16"	33 3/16"	19 3/8"	14 1/2"	38 1/4"	22"	30 15/16"	16 3/4"	29 9/16"	1 3/16"	19 3/8"	21 1/2"	11 1/2"	14 3/4"	17 7/8"	172
BI-20	49 3/16"	42 15/16"	14 15/16"	36 7/16"	21 3/16"	15 3/4"	46 3/8"	28"	40 15/16"	25 1/8"	32 3/16"	1 3/16"	21 1/4"	27 5/8"	14 9/16"	22 3/4"	19 3/4"	289
BI-22	51 9/16"	44 3/8"	16 3/8"	40 7/16"	23 9/16"	17 3/4"	48 7/16"	28"	40 15/16"	25 1/8"	35 9/16"	1 3/16"	23 5/8"	27 5/8"	14 9/16"	22 3/4"	21 13/16"	322
BI-24	58 3/16"	49 15/16"	17 15/16"	44 11/16"	26 1/8"	19 3/8"	51 5/16"	32 1/8"	46 11/16"	28 15/16"	39 1/8"	1 7/16"	26"	28 15/16"	18 5/16"	26 3/8"	23 3/8"	385
BI-27	60 11/16"	51 1/2"	19 1/2"	49"	28 11/16"	21 1/4"	53 1/8"	32 1/8"	46 11/16"	28 15/16"	42 13/16"	1 7/16"	28 5/8"	28 7/8"	18 5/16"	26 3/8"	25 1/4"	411
BI-30	65 15/16"	68 3/16"	24 7/8"	54 1/2"	31 7/8"	23 5/8"	58 5/8"	43 5/16"	65 5/16"	44 5/16"	50 15/16"	1 11/16"	31 3/4"	32"	17"	40"	29"	517
BI-33	68 3/16"	68 5/8"	25 3/8"	58 15/16"	34 7/8"	25 15/16"	60 15/16"	43 5/16"	65 5/16"	44 5/16"	53 7/8"	1 11/16"	35"	32"	17"	40"	31 5/16"	607
BI-36	70 7/8"	69"	25 1/2"	66 3/16"	38 9/16"	28 11/16"	63 11/16"	43 5/16"	65 5/16"	44 5/16"	56 15/16"	1 15/16"	38 3/4"	32"	17"	40"	34 1/16"	747

ACCESSORIES

- V-Cap
- Bolted Clean Out Door
- Heat Slinger
- Vibration Isolators
- Shaft Seal
- Corrosion Resistant Coating
- Aluminum Wheel
- Back Draft Dampers
- Inlet & Outlet Screens
- 2" Drain Fitting

For more information on accessories, see Options & Accessories page in Roof Mount Ventilation tab