

ADD SERIES

Direct drive wall fans designed for heavy duty, commercial and industrial exhaust applications

These fans are typically used for high volume, high static pressure applications. The series ADD is designed and constructed for efficient & economical operations and is direct drive, therefore requiring little or no maintenance. Heavy duty cast aluminum airfoil or polyamide glass reinforced (PAG) blades are standard to ADD series fans providing maximum performance at low sound levels.

Applications include factories, warehouses, gymnasiums, underground parking garages, etc.

This fan is used for exhaust applications. Please consult factory for supply applications.

OPTIONAL - Reversing blades available on 30", 36", 42" and 48" models. Consult factory for details.

FEATURES

- Heavy gauge steel fan panel with deep spun and flared venturi for maximum efficiency.
- Heavy gauge welded steel motor supports.
- Cast aluminum airfoil or polyamide glass reinforced (PAG) blades.
- TEFC motors are standard.



Reversing fan with cabinet will be a steel control damper.



Non-stock, made-to-order products are non-returnable and cannot be cancelled.

DIMENSIONS

MODEL	BLADE DIAMETER	A X A SQUARE	B	C (DIRECT DRIVE MOTOR FRAME)		
				56 - 184	213 - 215	254 - 286
ADD12	12"	16.125"	2.0"	13"	--	--
ADD14	14"	18.125"	2.5"	13"	--	--
ADD16	16"	20.125"	3.0"	13"	--	--
ADD18	18"	22.125"	3.0"	13"	--	--
ADD20	20"	24.125"	3.5"	13"	--	--
ADD24	24"	29.625"	4.0"	13"	14"	--
ADD30	30"	35.625"	4.5"	13"	14"	25"
ADD36	36"	41.625"	5.0"	13"	14"	25"
ADD42	42"	47.625"	5.0"	13"	14"	25"
ADD48	48"	53.625"	5.0"	--	14"	25"

OPTIONS



For fan complete with cabinet/guard and shutter, substitute "T" with CBS

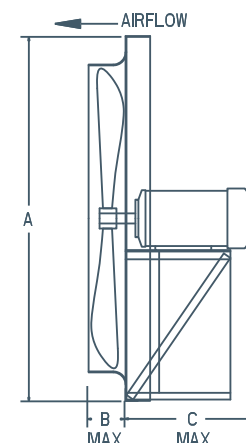


For fan complete with front sleeve and shutter, substitute "T" with SLS



For fan with rear sleeve and back guard, substitute "T" with SLB

For a complete listing of all available options, see the Options & Accessories page.



ADD SERIES

SPECIFICATIONS

Single Phase

Single Phase							CFM @ STATIC PRESSURE																							
							0"				1/4"				1/2"				3/4"				1"				1-1/4"			
	MODEL #	WEIGHT (LBS.)	RPM	HP	BLADE PITCH	dBA @ 5 ft	CFM	BHP	FEI	FEPact (kW)	CFM	BHP	FEI	FEPact (kW)	CFM	BHP	FEI	FEPact (kW)	CFM	BHP	FEI	FEPact (kW)	CFM	BHP	FEI	FEPact (kW)	CFM	BHP	FEI	FEPact (kW)
							SINGLE PHASE																							
BLADE DIAMETER	12"	ADD12T10033C	40	1140	1/3	-	45	990	-	-	-	102	-	-	-	-	-	-	-	-	-	-	-	-	-	-	-	-	-	-
		ADD12T10033B	34	1750	1/3	-	55	1450	-	-	-	1230	-	-	-	313	-	-	-	-	-	-	-	-	-	-	-	-	-	-
	14"	ADD14T10033C	42	1140	1/3	-	49	1450	-	-	-	443	-	-	-	-	-	-	-	-	-	-	-	-	-	-	-	-	-	-
		ADD14T10033B	34	1750	1/3	-	58	2220	-	-	-	1920	-	-	-	1350	-	-	-	512	-	-	-	185	-	-	-	-	-	-
	16"	ADD16T10033C	46	1140	1/3	-	53	2150	-	-	-	1640	-	-	-	340	-	-	-	-	-	-	-	-	-	-	-	-	-	-
		ADD16T10050B	38	1750	1/2	-	63	3300	-	-	-	3040	-	-	-	2690	-	-	-	1750	-	-	-	825	-	-	-	370	-	-
	18"	ADD18T10033C	47	1140	1/3	-	57	2990	-	-	-	2450	-	-	-	845	-	-	-	-	-	-	-	-	-	-	-	-	-	-
		ADD18T10075B	40	1750	3/4	-	67	4590	-	-	-	4280	-	-	-	3910	-	-	-	3260	-	-	-	1750	-	-	-	-	-	-
	20"	ADD20T10033C	50	1140	1/3	-	62	4530	-	-	-	3180	-	-	-	739	-	-	-	-	-	-	-	-	-	-	-	-	-	-
		ADD20T10100B	61	1750	1	-	72	5800	0.84	0.78	0.84	4300	0.8	0.97	0.80	3000	0.75	1.02	0.76	2100	0.97	0.76	0.96	-	-	-	-	-	-	-
	24"	ADD24T10050C	91	1140	1/2	30.0	59	5200	-	-	-	3800	-	-	-	2000	-	-	-	800	-	-	-	-	-	-	-	-	-	-
		ADD24T10100C	125	1140	1	37.5	65	6600	0.6	1.30	0.56	5100	0.64	1.52	0.60	3000	0.71	1.19	0.65	1500	0.97	0.64	0.87	-	-	-	-	-	-	
ADD24T10150B		71	1750	1 1/2	25.0	68	6800	0.92	0.91	0.82	5800	1.14	1.00	1.01	5100	1.16	1.18	1.03	3900	1.21	1.13	1.07	3000	1.29	1.02	1.13	-	-		
ADD24T10200B		113	1750	2	32.5	73	8900	1.61	0.68	1.40	7800	1.85	0.82	1.59	6900	1.86	0.99	1.60	5400	1.81	1.02	1.56	4500	1.89	1.00	1.63	-	-		
ADD24T10300B		125	1750	3	37.5	75	10300	2.3	0.55	1.96	9200	2.41	0.74	2.05	8100	2.39	0.90	2.03	6600	2.28	0.98	1.94	5400	2.32	0.97	1.97	4200	2.62	0.81	2.22
ADD30T10100C		138	1140	1	25.0	65	8200	0.58	1.62	0.55	6600	0.74	0.82	1.66	4500	0.81	1.48	0.74	2700	0.91	1.08	0.82	-	-	-	-	-	-	-	
30"	ADD30T10300B	139	1750	3	25.0	74	12500	2.14	0.70	1.83	11300	2.53	0.85	2.14	10500	2.67	1.02	2.26	9300	2.74	1.12	2.31	8400	2.8	1.21	2.36	6600	2.9	1.09	2.44
	ADD36T10500B	180	1750	5	20.0	75	14200	3.18	0.54	2.67	12900	3.32	0.74	2.78	11700	3.46	0.88	2.90	10800	3.55	1.00	2.97	9300	3.62	1.03	3.02	7500	3.61	0.99	3.02
	ADD36T10750B	245	1750	7 1/2	25.0	82	19600	4.53	0.51	3.76	18200	5.13	0.67	4.24	16800	5.46	0.79	4.50	15600	5.57	0.92	4.59	14400	5.62	1.02	4.63	12600	5.65	1.04	4.65
	ADD36T11000B	255	1750	10	32.5	83	27600	8.8	0.37	7.16	26200	9.18	0.53	7.46	24900	9.46	0.67	7.68	23400	9.65	0.79	7.83	21900	9.73	0.89	7.90	20400	9.75	0.97	7.91

Three Phase

Three Phase							CFM @ STATIC PRESSURE																									
BLADE DIAMETER	MODEL #	WEIGHT (LBS.)	RPM	HP	BLADE PITCH	dBA @ 5 ft	0"				1/4"				1/2"				3/4"				1"				1-1/4"					
	THREE PHASE						CFM	BHP	FEI	FEPact (kW)	CFM	BHP	FEI	FEPact (kW)	CFM	BHP	FEI	FEPact (kW)	CFM	BHP	FEI	FEPact (kW)	CFM	BHP	FEI	FEPact (kW)	CFM	BHP	FEI	FEPact (kW)		
12"	ADD12T30033C*	40	1140	1/3	-	45	990	-	-	-	102	-	-	-	-	-	-	-	-	-	-	-	-	-	-	-	-	-	-	-	-	
	ADD12T30033B*	34	1750	1/3	-	55	1450	-	-	-	1230	-	-	-	-	313	-	-	-	-	-	-	-	-	-	-	-	-	-	-	-	
	ADD14T30033C*	42	1140	1/3	-	49	1450	-	-	-	443	-	-	-	-	-	-	-	-	-	-	-	-	-	-	-	-	-	-	-	-	
	ADD14T30033B*	34	1750	1/3	-	58	2220	-	-	-	1920	-	-	-	-	1350	-	-	-	512	-	-	-	185	-	-	-	-	-	-	-	
	ADD16T30033C*	46	1140	1/3	-	53	2150	-	-	-	1640	-	-	-	340	-	-	-	-	-	-	-	-	-	-	-	-	-	-	-	-	
	ADD16T30050B*	38	1750	1/2	-	63	3300	-	-	-	3040	-	-	-	2690	-	-	-	1750	-	-	-	825	-	-	-	-	-	370	-	-	-
	ADD18T30033C*	47	1140	1/3	-	57	2990	-	-	-	2450	-	-	-	845	-	-	-	-	-	-	-	-	-	-	-	-	-	-	-	-	
	ADD18T30075B*	40	1750	3/4	-	67	4590	-	-	-	4280	-	-	-	3910	-	-	-	3260	-	-	-	1750	-	-	-	-	-	-	-	-	
	ADD20T30033C*	50	1140	1/3	-	62	4530	-	-	-	3180	-	-	-	739	-	-	-	-	-	-	-	-	-	-	-	-	-	-	-	-	
	ADD20T30100B*	61	1750	1	-	72	5800	0.84	0.89	0.74	4300	0.8	1.11	0.70	3000	0.75	1.17	0.66	2100	0.97	0.85	0.85	-	-	-	-	-	-	-	-	-	
	ADD24T30050C*	91	1140	1/2	30.0	59	5200	-	-	-	3800	-	-	-	2000	-	-	-	800	-	-	-	-	-	-	-	-	-	-	-	-	-
	ADD24T30100C*	125	1140	1	37.5	65	6600	0.6	1.30	0.56	5100	0.64	1.52	0.60	3000	0.71	1.19	0.65	1500	0.97	0.64	0.88	-	-	-	-	-	-	-	-	-	
24"	ADD24T30150C*	117	1140	1 1/2	45.0	67	7800	1	0.97	0.87	5400	0.88	1.22	0.78	3200	0.89	1.04	0.79	1400	1.07	0.57	0.93	-	-	-	-	-	-	-	-	-	
	ADD24T30150B*	71	1750	1 1/2	25.0	68	6800	0.92	0.92	0.82	5800	1.14	1.02	0.99	5100	1.16	1.20	1.01	3900	1.21	1.14	1.05	3000	1.29	1.03	1.12	-	-	-	-	-	
	ADD24T30200B*	113	1750	2	32.5	73	8900	1.61	0.68	1.40	7800	1.85	0.82	1.60	6900	1.86	0.98	1.61	5400	1.81	1.02	1.56	4500	1.89	1.00	1.63	-	-	-	-	-	
	ADD24T30300B*	125	1750	3	37.5	75	10300	2.3	0.56	1.92	9200	2.41	0.75	2.01	8100	2.39	0.91	2.00	6600	2.28	1.00	1.91	5400	2.32	0.99	1.94	4200	2.62	0.82	2.18	-	
	ADD30T30100C*	138	1140	1	25.0	65	8200	0.58	1.61	0.54	6600	0.74	1.69	0.67	4500	0.81	1.51	0.72	2700	0.91	1.11	0.80	-	-	-	-	-	-	-	-	-	
	ADD30T30150C*	131	1140	1 1/2	32.5	69	11000	1.08	1.22	0.93	9400	1.28	1.40	1.10	6900	1.32	1.39	1.13	4500	1.42	1.12	1.21	-	-	-	-	-	-	-	-	-	
	ADD30T30200C*	149	1140	2	35.0	70	11900	1.35	1.06	1.16	10400	1.5	1.30	1.30	8100	1.53	1.38	1.32	5100	1.61	1.10	1.38	3000	1.92	0.71	1.62	-	-	-	-	-	
	ADD30T30300B*	139	1750	3	25.0	74	12500	2.14	0.71	1.80	11300	2.53	0.86	2.12	10500	2.67	1.04	2.23	9300	2.74	1.14	2.28	8400	2.8	1.22	2.33	6600	2.9	1.11	2.41	-	
	ADD30T30500B*	149	1750	5	32.5	78	16500	4	0.50	3.31	15500	4.33	0.69	3.51	14700	4.52	0.86	3.66	13200	4.64	0.96	3.76	11700	4.63	1.03	3.75	9900	4.63	1.03	3.75	-	
	ADD36T30200C*	180	1140	2	25.0	73	12500	1.5	1.00	1.28	10200	1.74	1.13	1.47	7500	1.78	1.13	1.50	4800	1.83	0.93	1.54	2100	1.97	0.52	1.66	-	-	-	-	-	
	ADD36T30300C*	212	1140	3	30.0	74	15000	2.15	0.83	1.81	13000	2.41	1.03	2.01	10200	2.43	1.11	2.03	7200	2.45	1.01	2.05	3900	2.71	0.64	2.26	-	-	-	-	-	
	ADD36T30500C*	223	1140	5	32.5	76	16300	2.59	0.74	2.18	14400	2.8	0.97	2.35	11700	2.81	1.08	2.35	8100	2.8	0.98	2.35	5100	3.04	0.72	2.54	2100	3.47	0.35	2.89	-	
36"	ADD36T30500B*	180	1750	5	20.0	75	14200	3.18	0.54	2.64	12900	3.32	0.75	2.75	11700	3.46	0.89	2.87	10800	3.55	1.01	2.94	9300	3.62	1.04	3.00	7500	3.61	1.00	2.99	-	
	ADD36T30750B*	245	1750	7 1/2	25.0	82	19600	4.53	0.52	3.67	18200	5.13	0.68	4.15	16800	5.46	0.81	4.41	15600	5.57	0.93	4.50	14400	5.62	1.04	4.54	12600	5.65	1.06	4.56	-	
	ADD36T31000B*	255	1750	10	32.5	83	27600	8.8	0.37	7.14	26200	9.18	0.53	7.45	24900	9.46	0.67	7.68	23400	9.65	0.79	7.84	21900	9.73	0.88	7.91	20400	9.75	0.97	7.93	-	
	ADD42T30200D*	233	860	2	35.0	70	18200	1.68	1.16	1.54	14100	1.88	1.30	1.72	9600	1.88	1.24	1.72	-	-	-	-	-	-	-	-	-	-	-	-	-	
	ADD42T30300D*	233	860	3	37.5	72	19900	2.07	1.03	1.89	15800	2.21	1.23	2.01	10500	2.18	1.16	1.98	4500	2.4	0.63	2.18	-	-	-	-	-	-	-	-	-	
	ADD42T30500C*	236	1140	5	35.0	76	24100	3.84	0.73	3.19	21000	4.25	0.91	3.53	18000	4.31	1.06	3.58	14700	4.27	1.12	3.55	10800	4.32	1.00	3.59	6000	4.57	0.65	3.80	-	
	ADD42T30750C*	258	1140	7 1/2	37.5	78	26300	4.75	0.65	3.89	23300	4.99	0.87	4.08	20400	5.08	1.03	4.16	17100	5.02	1.12	4.10	12900	5.03	1.03	4.11	8100	5.2	0.76	4.25	-	
	ADD42T31000B*	254	1750	10	25.0	83	22800	6.07	0.45	4.94	21000	6.25	0.64	5.08	19500	6.39	0.79	5.19	17700	6.5	0.90	5.28	16500	6.54	1.01	5.31	14300	6.45	1.04	6.85	-	
	ADD42T31500B*	380	1750	15	32.5	89	33400	11.2	0.35	8.96	31400	12.1	0.48	9.73	29700	12.7	0.60	10.19	27600	12.9	0.69	10.40	25800	13	0.78	10.43	24000	13	0.86	10.42	-	
	48"	ADD48T30500D*	382	860	5	35.0	75	28200	3.94	0.77	3.49	24600	4.4	0.96	3.89	20700	4.53	1.08	4.01	15300	4.51	1.03	3.99	10200	4.53	0.85	4.01	-	-	-	-	-
		ADD48T30750D*	507	860	7 1/2	40.0	77	33300	4.46	0.79	3.96	29400	6.05	0.83	5.35	24600	6.07	0.95	5.37	18000	5.97	0.91	5.28	13500	6.00	0.82	5.38	6900	6.83	0.46	6.05	-
		ADD48T31000C*	425	1140	10	32.5	81	34200	7.39	0.53	6.03	31600	7.84	0.74	6.39	29100	8.18	0.90	6.67	26400	8.42	1.01	6.87	23700	8.56	1.08	6.99	20400	8.57	1.10	6.99	-
ADD48T31500C*		570	1140	15	40.0	83	44200	12.5	0.41	10.07	41400	13.5	0.56	10.91	38400	14	0.69	11.37	34800	14	0.79	11.38	30900	14	0.85	11.39	26100	13.9	0.86	11.31	-	
ADD48T32000C*		596	1140	20	45.0	85	50900	18	0.32	14.59	48000	18.4	0.48	14.87	44700	18.5	0.60	14.96	40800	18.2	0.71	14.74	36300	17.9	0.78	14.49	29700	17.4	0.78	14.07	-	

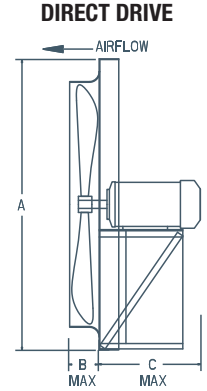
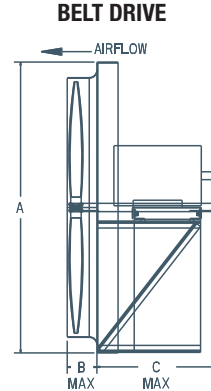
WALL EXHAUST FANS & VENTURI DIMENSIONS

for Standard Options

VENTURI



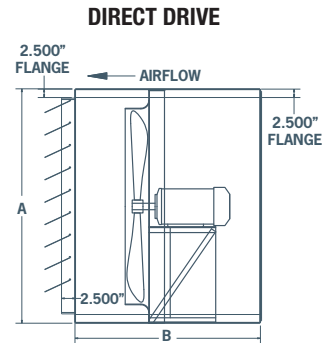
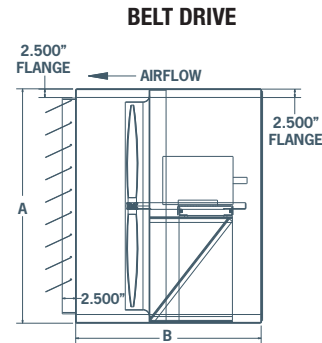
BLADE DIAMETER	A X A SQUARE	B	C					
			BELT DRIVE MOTOR FRAME			DIRECT DRIVE MOTOR FRAME		
			56 - 184	213 - 286	56 - 184	213 - 215	254 - 286	
12"	16.125"	2.0"	--	--	13"	--	--	--
14"	18.125"	2.5"	--	--	13"	--	--	--
16"	20.125"	3.0"	--	--	13"	--	--	--
18"	22.125"	3.0"	--	--	13"	--	--	--
20"	24.125"	3.5"	--	--	13"	--	--	--
24"	29.625"	4.0"	18"	--	13"	14"	--	--
30"	35.625"	4.5"	18"	--	13"	14"	25"	--
36"	41.625"	5.0"	18"	28"	13"	14"	25"	--
42"	47.625"	5.0"	18"	28"	13"	14"	25"	--
48"	53.625"	5.0"	18"	28"	--	14"	25"	--
54"	59.657"	5.5"	18"	28"	--	--	--	--
60"	67.657"	6.0"	18"	28"	--	--	--	--



CABINET, BACK GUARD & SHUTTER (CBS)



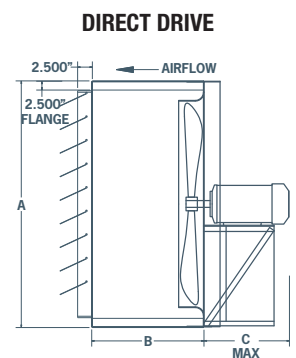
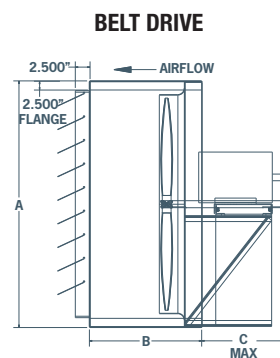
BLADE DIAMETER	A X A SQUARE	B	B					
			BELT DRIVE MOTOR FRAME			DIRECT DRIVE MOTOR FRAME		
			56 - 184	213 - 286	56 - 184	213 - 215	254 - 286	
12"	16.375"	--	--	--	26"	--	--	--
14"	18.375"	--	--	--	26"	--	--	--
16"	20.375"	--	--	--	26"	--	--	--
18"	22.375"	--	--	--	26"	--	--	--
20"	24.375"	--	--	--	26"	--	--	--
24"	29.875"	33"	--	--	33"	33"	--	--
30"	35.875"	33"	--	--	33"	33"	43"	--
36"	41.875"	33"	43"	--	33"	33"	43"	--
42"	47.875"	33"	43"	--	33"	33"	43"	--
48"	53.875"	33"	43"	--	--	33"	43"	--
54"	59.9375"	33"	43"	--	--	--	--	--
60"	67.9375"	33"	43"	--	--	--	--	--



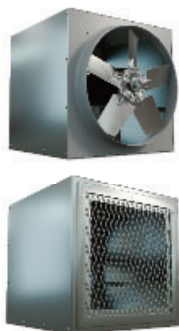
FRONT SLEEVE & SHUTTER (SLS)



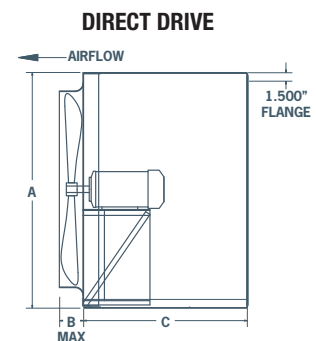
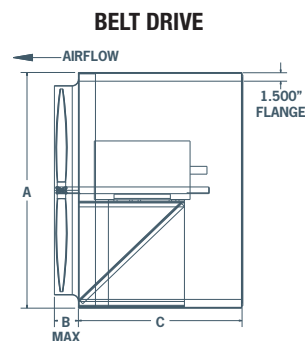
BLADE DIAMETER	A X A SQUARE	B	C					
			BELT DRIVE MOTOR FRAME			DIRECT DRIVE MOTOR FRAME		
			56 - 184	213 - 286	56 - 184	213 - 215	254 - 286	
12"	16.375"	15.0"	--	--	12"	--	--	--
14"	18.375"	15.0"	--	--	12"	--	--	--
16"	20.375"	15.0"	--	--	12"	--	--	--
18"	22.375"	15.0"	--	--	12"	--	--	--
20"	24.375"	15.0"	--	--	12"	--	--	--
24"	29.875"	19.0"	15"	--	10"	11"	--	--
30"	35.875"	19.0"	15"	--	10"	11"	22"	--
36"	41.875"	19.0"	15"	25"	10"	11"	22"	--
42"	47.875"	19.0"	15"	25"	10"	11"	22"	--
48"	53.875"	19.0"	15"	25"	--	11"	22"	--
54"	59.9375"	19.0"	15"	25"	--	--	--	--
60"	67.9375"	19.0"	15"	25"	--	--	--	--



REAR SLEEVE & BACK GUARD (SLB)



BLADE DIAMETER	A X A SQUARE	B	C					
			BELT DRIVE MOTOR FRAME			DIRECT DRIVE MOTOR FRAME		
			56 - 184	213 - 286	56 - 184	213 - 215	254 - 286	
12"	16.375"	2.0"	--	--	15"	--	--	--
14"	18.375"	2.5"	--	--	15"	--	--	--
16"	20.375"	3.0"	--	--	15"	--	--	--
18"	22.375"	3.0"	--	--	15"	--	--	--
20"	24.375"	3.5"	--	--	15"	--	--	--
24"	29.875"	4.0"	19"	--	19"	19"	--	--
30"	35.875"	4.5"	19"	--	19"	19"	29"	--
36"	41.875"	5.0"	19"	29"	19"	19"	29"	--
42"	47.875"	5.0"	19"	29"	19"	19"	29"	--
48"	53.875"	5.0"	19"	29"	--	19"	29"	--
54"	59.9375"	5.5"	19"	29"	--	--	--	--
60"	67.9375"	6.0"	19"	29"	--	--	--	--

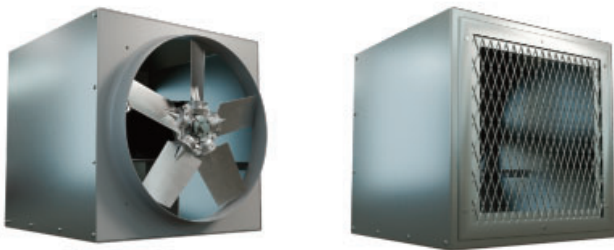


OPTIONS & ACCESSORIES

CABINET, BACK GUARD & SHUTTER (CBS)



REAR SLEEVE & BACK GUARD (SLB)



FRONT SLEEVE & SHUTTER (SLS)



STEEL CONTROL & MOTORIZED CONTROL DAMPERS



Motorized steel control dampers can be mounted in fan cabinet or sleeve in either exhaust or intake applications. Consult factory.

GUARDS

FRONT GUARD

Front guards available, consult factory.

Wire mesh not available on all sizes.



MOTOR OPTIONS

TWO SPEED MOTOR

Two speed motors are available for some of Canarm/LFI's exhaust fans. 1800/1200 or 1800/900 RPM variable torque, single and three phase. Consult factory for available voltages and configurations.

EXPLOSION PROOF MOTORS

Some of Canarm/LFI exhaust fans can be equipped with Explosion Proof Motors for hazardous locations. Class I, Groups C & D - Class II, Groups F & G. Consult factory for models.

Class I, Group C Atmospheres containing ethyl ether, ethylene, gases or vapors of equivalent hazard.

Class I, Group D Atmospheres such as acetone, ammonia, benzene, butane, cyclopropane, ethanol, gasoline, hexane, methane, natural gas, naphtha, propane, or gasses or vapors of equivalent hazard.

Class II Group F Atmospheres containing carbonaceous dust, including carbon black, charcoal, coal, or coke dusts that have more than 8% total entrapped volatiles, or dusts that have been sensitized by other materials so that they present an explosion hazard.

Class II Group G Atmospheres containing combustible dusts not included in group E or F, including flour, grain, wood, plastic and chemicals.

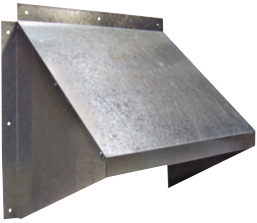
SPECIAL COATING

For most applications, Canarm's standard enamel paint will provide the necessary surface protection for painted parts. For special requirements, coatings such as hot dipped galvanizing and epoxy, please consult factory.

DISCONNECT SWITCHES

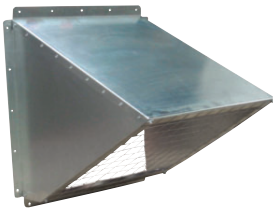
Wire disconnect switches are available. See Controls & Thermostats section for details.

HOODS



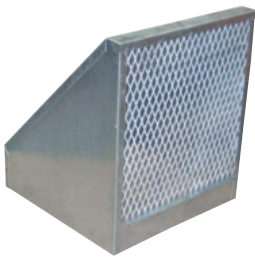
GH GALVANIZED HOODS

- Economical shipping.
- Easy to assemble, galvanized hood.
- No screens.



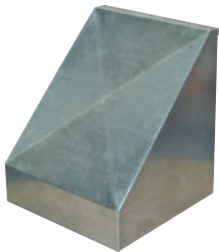
GH KNOCK DOWN HOODS

- Easy to assemble, galvanized hood.
- Includes bird screen.



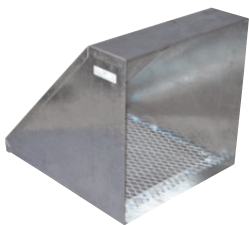
WHA HOODS

- For AX fans.
- Shipped fully assembled.
- 18 gauge galvanized weather hoods complete with bird screen.
- Optional insect screen available. Consult factory.



WHP HOODS

- For Panel fans.
- 18 gauge galvanized weather hoods complete with bird screen.
- Optional insect screen available. Consult factory.



INTAKE & EXHAUST HOODS

- Shipped fully assembled.
- 18 gauge galvanized weather hoods complete with bird screen.



PLASTIC HOODS

- Rugged, grey plastic hood.
- No screens.

HOOD MODEL	DIMENSIONS		APPROX. WEIGHT (LBS)	FANS THAT WILL FIT
	INSIDE DIMENSIONS	OUTSIDE DIMENSIONS		
GH GALVANIZED HOODS				
GH-XF12-M	14.75"W X 14.0"H	18"W X 15.75"H	4	XF12 / XB12 / SD8 / SD10 / AX8 / AX10 / AX12
GH-XF16-M	18.75"W 17.75"H	22"W X 19.75"H	7	XF16 / XB12 / HV12 / HVA12 / ADD12 / DDP12 / DDS12 / SD12-14 / AX14-16
GH-XF20-M	22.75"W X 22"H	26"W X 23.75"H	9	XF20 / XB14 / XB16 / HV14-16 / HVA14-16 / ADD14-16 / DDP14-16 / DDS14-16 / SD16-18 / AX18-20
GH-XF24-M	26.75"W 26"H	29"W X 27.25"H	12	XFS24
GH KNOCKDOWN HOODS				
GH-KD24	31.65"W X 31.66"H	34.65"W X 34.69"H	31	XB24 / HV24 / HVA24 / ADD24 / DDP24 / DDS24 / SD24 / AX24
GH-KD36	43.62"W X 43.93"H	46.62"W X 46.82"H	75	XB30-36 / HV30-36 / HVA30-36 / ADD30-36 / DDS30-36 / SD30-36 / AX30-36 / AX42
GH-KD48	55.62"W X 55.25"H	58.62"W X 58.82"H	TBA	XB42-48 / HV42-48 / HVA42-48 / ADD42-48 / DDS42-48 / SD42 / AX42
GH-KD60	69.76"W X 69.92"H	72.76"W X 72.95"H	TBA	XB54-60 / HV54-60 / HVA54-60 / ADD54-60
WHA HOODS				
WHA8-10	12.11"W X 12.11"H	-	13	AX08-10, SD8
WHA12	14.05"W X 14.05"H	-	16	AX12, SD10
WHA14	16.11"W X 16.11"H	-	22	AX14, SD12
WHA16	18.11"W X 18.11"H	-	26	AX16, SD14
WHA18	20.11"W X 20.11"H	-	29	AX18, SD16
WHA20	22.05"W X 22.05"H	-	31	AX20, SD18
WHA24	26.05"W X 26.05"H	-	47	AX24
WHA30	33.05"W X 33.05"H	-	59	AX30
WHA36	39.11"W X 39.11"H	-	76	AX36
WHP HOODS				
WH8-10P	14.45"W x 14.45"H	-	20	P08 / P10
WH12P	17.40"W X 17.40"H	-	16	P12
WH14P	19.20"W X 19.20"H	-	24	P14
WH16P	21.20"W X 21.20"H	-	26	P16
WH18P	23.20"W X 23.20"H	-	29	P18
WH20P	25.20"W X 25.20"H	-	44	P20
WH24P	29.15"W X 29.15"H	-	44	P24
WH30P	35.65"W X 35.65"H	-	60	P30
WH36P	41.65"W X 41.65"H	-	77	P36
EXHAUST / INTAKE / WEATHER HOODS				
EH12	16.55"W X 16.55"H	-	9	XF12 / SD8-12 / AX8-14 / XB12 / HV12 / HVA12 / ADD12 / DDP12 / DDS12
EH14	18.60"W X 18.60"H	-	15	XB14 / HV14 / HVA14 / ADD14 / DDP14 / DDS14 / SD14 / XF16 / AX16
EH16	20.60"W X 20.60"H	-	20	AX18 / SD16 / XB16 / HV16 / HVA16 / ADD16 / DDP16 / DDS16
EH18	22.55"W X 22.55"H	-	31	SD18 / XB18 / HV18 / HVA18 / ADD18 / DDP18 / DDS18 / XF20 / AX20
EH20	24.55"W X 24.55"H	-	44	SD20 / XB20 / XF24 / HV20 / HVA20 / ADD20 / DDP20 / DDS20
EH24	30.05"W X 30.05"H	-	60	SD24 / AX24 / XB24 / ADD24 / HV24 / HVA24 / DDP24 / DDS24
EH30	36.35"W X 36.35"H	-	72	SD30 / AX30 / XB30 / HV30 / HVA30 / ADD30 / DDS30 / JFHVA24
EH36	42.30"W X 42.30"H	-	104	SD36 / AX36 / XB36 / HV36 / HVA36 / ADD36 / DDS36 / JFHVA30
EH42	48.63"W X 48.63"H	-	163	XB42 / HV42 / HVA42 / ADD42 / DDS42 / JFHVA36 / SD42 / AX42
EH48	54.64"W X 54.64"H	-	TBA	XB48 / HV48 / HVA48 / ADD48 / DDS48 / JFHVA42
EH54	61.20"W X 61.20"H	-	TBA	XB54 / HV54 / HVA54 / ADD54 / JFHVA48
EH60	69.39"W X 69.39"H	-	TBA	XB60 / HV60 / HVA60 / ADD60
PLASTIC HOODS				
HFP-18G	21.50"W X 21.75"H	-	9	S8 / S10 / S12 / S14 / S16 / S18V / AX08 / AX10 / AX12 / AX14 / AX16 / AX18
HFP-24G	27.50"W X 27.75"H	-	13	S20 / S24 AX20 / AX24

FILTER SECTION FOR WALL FANS

Fits XB, SXB, HV, HVA, ADD, DDP and DDS Series



FRONT



BACK

TYPICAL INSTALLATION

Supply & exhaust

FEATURES

- Filter sections are available in eight sizes from 24" to 60" wall mount propeller fans.
- Filters are accessible through bolted side panel for maintenance or replacement.
- Permanent expanded aluminum filters have large surface area for efficient filtration.
- Washable filters for easy cleaning (remove filter from cabinet for washing).
- Flanged or sleeve inlets side suitable for different designs.
- Filter sections could be used for intake or exhaust filtration.
- Shipped assembled or knock down for easy field assembly.



Needs rear sleeve to connect filter section & wall fan together.

DIMENSIONS

FAN SIZE	FLANGE MOUNT	SLEEVE MOUNT	A	B	B2	# OF FILTERS
				FLANGE MOUNT	SLEEVE MOUNT	
24"	FB24	FBS24	30 1/2"	22 3/8"	28 3/8"	4
30"	FB30	FBS30	36 1/2"	25 1/4"	31 1/4"	4
36"	FB36	FBS36	42 1/2"	21 5/8"	27 5/8"	4
42"	FB42	FBS42	48 1/8"	28 1/4"	34 1/4"	9
48"	FB48	FBS48	54 1/4"	26 3/8"	32 3/8"	9
54"	FB54	FBS54	60 1/2"	24 1/16"	30 1/16"	9
60"	FB60	FBS60	68 1/2"	27 1/4"	33 1/4"	12

