

600 SERIES

FC Exhauster Belt Drive Utility Blower



Canarm certifies that the 600 Series shown herein are licensed to bear the AMCA Seal. The ratings shown are based on tests and procedures performed in accordance with AMCA Publications 211 and comply with the requirements of the AMCA Certified Ratings Programme.

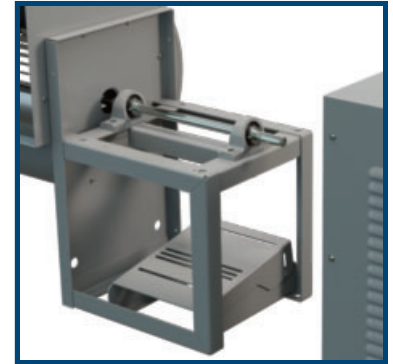
The AMCA certified ratings seal applies to air performance only. The 600 Series shown herein are not approved by AMCA for FEI ratings.



FEATURES

- Standard, vented motor and drive compartment cover with handles for safety and weather protection.
- Sliding motor base for belt tension adjustment.
- Standard top horizontal discharge position can be easily rotated to any of 8 positions.
- Shafts for 620, 622 & 625 models are keywayed for wheels and pulleys (610 to 618 models for pulleys only).
- Outlet flanges on models 620, 622 & 625.
- Available in CW or CCW rotation.
- Keywayed shaft.
- Heavy duty pillow block ball bearings.

MOTOR AND DRIVE COMPARTMENT WITH COVER REMOVED TO ILLUSTRATE 3 SIDE MOTOR ACCESS AND SLOPED MOTOR BASE FOR BELT TENSIONING.



SPECIFICATIONS

MODEL	1/2" SP				1" SP				1 1/2" SP				2" SP				2 1/2" SP				Min HP	Max HP
	CFM	BHP	FEI	FEAct (kW)	CFM	BHP	FEI	FEAct (kW)	CFM	BHP	FEI	FEAct (kW)	CFM	BHP	FEI	FEAct (kW)	CFM	BHP	FEI	FEAct (kW)		
610	2600	1.99	0.61	1.84	2400	1.87	0.72	1.74	2300	1.95	0.80	1.80	2200	2	0.88	1.85	2000	1.83	0.99	1.70	1/6	2
612	3000	1.89	0.70	1.75	2800	1.86	0.82	1.73	2700	1.99	0.90	1.84	2500	1.98	0.97	1.83	2300	1.92	1.06	1.78	1/3	2
615	6400	4.93	0.68	4.32	6000	4.89	0.75	4.28	5700	4.97	0.82	4.35	5400	4.93	0.89	4.32	5100	4.87	0.96	4.27	1/3	3
618	6700	4.92	0.60	4.31	6300	4.97	0.68	4.35	5900	4.93	0.77	4.32	5500	4.85	0.84	4.25	5200	4.91	0.91	4.30	1/2	5
620	10300	9.78	0.48	8.34	9900	9.8	0.57	8.36	9600	9.98	0.64	8.51	9200	9.82	0.73	8.38	8900	10	0.79	8.53	1/2	7 1/2
622	11500	9.83	0.49	8.38	11000	9.99	0.58	8.52	10400	9.79	0.67	8.35	10000	10	0.74	8.53	9400	9.83	0.81	8.38	1/2	7 1/2
625	14300	9.95	0.57	8.48	13500	9.99	0.68	8.52	12500	9.86	0.76	8.41	11900	10	0.84	8.53	11400	9.96	0.94	8.49	1	10

Power rating (BHP) does not include transmission losses. Performance certified is for installation type B: Free inlet, Ducted outlet. Performance ratings do not include the effect of appurtenances (accessories).

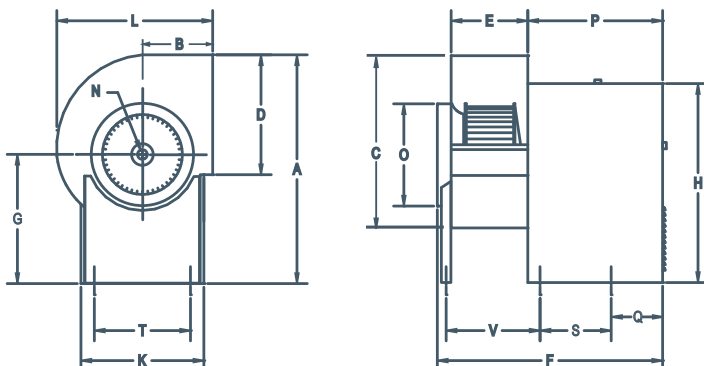
FOR FAN CURVES & FULL PERFORMANCE DATA, CONSULT OUR DELAIR SOFTWARE. WWW.CANARM.COM/DELAIR



View FEI charts
canarm.com/fei-600

DIMENSIONS

MODEL	A	B	C	D	E	F	G	H	K	L	N	O	P	Q	S	T	V	WHEEL DIAMETER	WHEEL WIDTH	WEIGHT (lbs) without motor
610	24 13/16"	8"	17 7/16"	11 3/8"	9 3/16"	28 9/16"	15 1/16"	21 5/16"	13 3/16"	16 3/4"	3/4"	12"	17 1/4"	3 3/4"	11 3/4"	11 7/16"	--	11 1/8"	7 3/16"	57
612	26 9/16"	9 1/8"	20 1/4"	13 7/16"	9 3/16"	28 9/16"	15 1/16"	21 5/16"	13 3/16"	19 1/2"	3/4"	14"	17 1/4"	3 3/4"	11 3/4"	11 7/16"	--	12 7/8"	7 3/16"	60
615	36 3/4"	11 1/4"	28 1/16"	17"	12 1/2"	35 7/8"	20 1/16"	29 1/8"	16 9/16"	25 15/16"	1"	17"	21 1/8"	--	11 1/2"	14 11/16"	15 5/8"	15 1/2"	9 9/16"	124
618	36 5/16"	12 3/8"	28 7/8"	18 7/8"	14"	37 3/8"	20 1/16"	29 1/8"	16 9/16"	27"	1"	18"	21 1/8"	--	11 1/2"	14 11/16"	17 1/8"	18 1/2"	10 13/16"	144
620	48 9/16"	14 7/16"	35 3/4"	24 3/4"	15 3/4"	46 7/16"	28"	40 7/8"	25 1/4"	32 7/16"	1 3/16"	21"	27 11/16"	--	14 5/8"	22 1/2"	18 7/8"	20 7/16"	10 1/4"	278
622	50 9/16"	15 11/16"	39 3/8"	27 1/4"	17 1/8"	47 13/16"	28"	40 7/8"	25 1/4"	35 1/2"	1 3/16"	22 1/2"	27 11/16"	--	14 5/8"	22 1/2"	20 1/4"	22 1/8"	11 1/4"	296
625	53 11/16"	17 1/4"	44 3/8"	31 1/4"	19 5/8"	50 5/16"	28"	40 7/8"	25 1/4"	39 5/8"	1 3/16"	26 3/4"	27 11/16"	--	14 5/8"	22 1/2"	22 3/4"	25 1/4"	13"	329



ACCESSORIES

- Back Draft Dampers
- Inlet & Outlet Screens
- Corrosion Resistant Finishes
- Bolted Clean Out Door
- Heat Slinger
- 2" Drain Fitting
- Shaft Seal (vinyl or polyethylene)
- Vibration Isolation

For more information on accessories, see Options & Accessories page in Roof Mount Ventilation tab