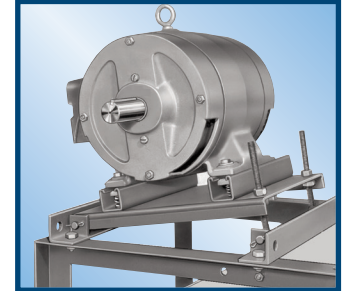
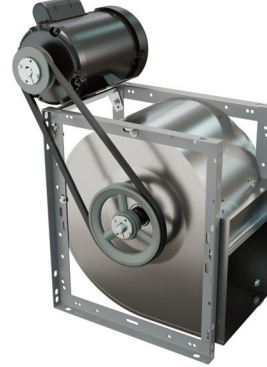


# 400 SERIES

## FC Exhauster Belt Drive Utility Blowers



AVAILABLE WITH MOTORS & DRIVES FACTORY INSTALLED. CONSULT OUR DELAIR FAN SELECTION SOFTWARE FOR DETAILS.



OPTIONAL 1 TO 15 HP MOTOR PLATFORM FOR MODELS 420, 422 & 425

## FEATURES

- Universal frame allows for choice of discharge position.
- Multiple choice for motor mounting location with each discharge position.
- Motor mounting hardware supplied with models 407 to 418.
- Optional platform for models 420 to 425.
- Keywayed shafts
- Ball bearings suitable for -65° to +250° F.
- Spider bearing brackets for models 407 - 418. Pillow block bearings with T bar support for models 420, 422 & 425.
- Optional back draft dampers, inlet & outlet screens and belt guards.
- Shafts 420, 422 & 425 models are keywayed for wheels and pulleys (407 to 418 models for pulleys only).

## PERFORMANCE SPECIFICATIONS

MODEL	1/2" SP				1" SP				1 1/2" SP				2" SP				2 1/2" SP				Max HP
	CFM	BHP	FEI	FE <sub>Pact</sub> (kW)	CFM	BHP	FEI	FE <sub>Pact</sub> (kW)	CFM	BHP	FEI	FE <sub>Pact</sub> (kW)	CFM	BHP	FEI	FE <sub>Pact</sub> (kW)	CFM	BHP	FEI	FE <sub>Pact</sub> (kW)	
407	1000	0.92	0.47	0.91	900	0.92	0.56	0.91	800	0.91	0.63	0.90	700	0.97	0.64	0.95	500	0.98	0.59	0.96	1
409	2100	1.78	0.52	1.66	2000	1.82	0.62	1.69	1900	1.82	0.71	1.69	1800	1.82	0.79	1.69	1700	1.84	0.85	1.69	2
410	2600	1.99	0.61	1.84	2400	1.87	0.72	1.74	2300	1.95	0.80	1.80	2200	2.00	0.88	1.85	2000	1.83	0.99	1.70	2
412	3000	1.89	0.70	1.75	2800	1.86	0.82	1.73	2700	1.99	0.90	1.84	2500	1.98	0.97	1.83	2300	1.92	1.06	1.78	2
415	5300	3.00	0.76	2.70	4800	2.91	0.86	2.62	4500	2.95	0.95	2.65	4200	3.00	1.03	2.70	3600	3.00	1.00	2.70	3
418	6700	4.92	0.60	4.31	6300	4.97	0.68	4.35	5900	4.93	0.77	4.32	5500	4.85	0.84	4.25	5200	4.91	0.91	4.30	5
420	9300	7.38	0.52	6.36	8900	7.47	0.62	6.43	8500	7.43	0.72	6.40	8100	7.42	0.80	6.39	7700	7.50	0.87	6.46	7 1/2
422	10300	7.32	0.54	6.31	9800	7.50	0.64	6.46	9200	7.41	0.74	6.38	8600	7.34	0.82	6.32	8000	7.41	0.88	6.38	7 1/2
425	14300	9.95	0.87	8.48	13500	9.99	0.68	8.52	12500	9.86	0.76	8.41	11900	10.00	0.84	8.53	11400	9.96	0.94	8.49	10

Power rating (BHP) does not include transmission losses. Performance certified is for installation type B: Free inlet, Ducted outlet.

Performance ratings do not include the effect of aperturancs (accessories).

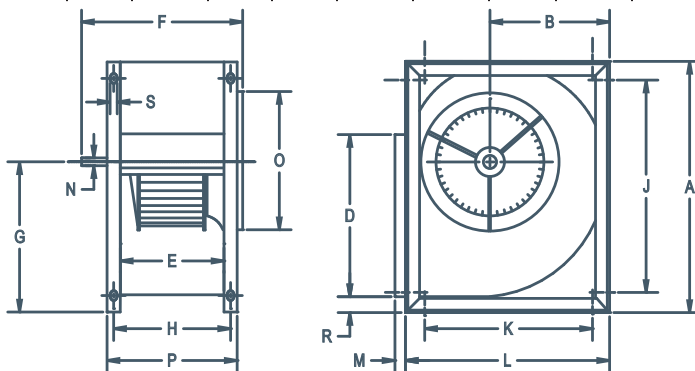
FOR FAN CURVES & FULL PERFORMANCE DATA, CONSULT OUR DELAIR SOFTWARE. DOWNLOAD @ [WWW.CANARM.COM/DELAIR](http://WWW.CANARM.COM/DELAIR)



View FEI charts  
[canarm.com/fei-400](http://canarm.com/fei-400)

## DIMENSIONS

MODEL	A	B	D	E	F	G	H	J	K	L	M	N	O	P	R	S	WHEEL DIAMETER	WHEEL WIDTH	WEIGHT (lbs) without motor
407	14 1/4"	6 1/2"	8 3/8"	6 7/8"	11 5/8"	8 5/8"	8"	11 1/16"	8 7/8"	11 3/4"	3/4"	3/4"	9"	9"	1 1/2"	7/16"	8 1/26"	4 15/16"	16
409	17 1/4"	7 15/16"	10 1/4"	9 3/16"	13 15/16"	10 1/8"	10 5/16"	14 5/8"	11 3/4"	14 1/2"	3/4"	3/4"	10"	11 5/16"	1 1/2"	7/16"	9 13/16"	7 3/16"	23
410	19 1/8"	9"	11 3/8"	9 3/16"	13 15/16"	11 1/4"	10 5/16"	16 1/4"	13 1/2"	16 1/4"	3/4"	3/4"	12"	11 5/16"	1 1/2"	7/16"	11 1/8"	7 3/16"	26
412	22 1/4"	10 9/16"	13 1/2"	9 3/16"	13 15/16"	13"	10 5/16"	19 5/8"	16 1/4"	19"	3/4"	3/4"	14"	11 5/16"	1 1/2"	7/16"	12 7/8"	7 3/16"	30
415	29 3/4"	14 3/4"	17"	12 1/2"	17 3/8"	18 1/8"	13 3/4"	27 1/4"	22 5/8"	25 1/4"	3/4"	1"	17"	14 3/4"	1 1/2"	7/16"	15 1/2"	9 9/16"	56
418	30 3/4"	14 15/16"	18 7/8"	14"	20 3/8"	17 3/4"	15 5/8"	28 1/2"	24"	26 1/2"	3/4"	1"	18"	17 1/4"	1 1/2"	7/16"	18 1/2"	10 13/16"	87
420	38"	18 5/16"	24 3/4"	15 3/4"	24 1/4"	22 9/16"	17 1/4"	32 7/16"	25 7/16"	31 1/4"	1 1/2"	1 3/16"	21"	19 3/4"	2"	5/8"	20 7/16"	10 1/4"	189
422	41 1/2"	20 1/16"	27 1/4"	17 1/8"	25 5/8"	24 5/8"	18 5/8"	35 31/32"	28 15/32"	34 1/4"	1 1/2"	1 3/16"	22 1/2"	21 1/8"	2"	5/8"	22 1/8"	11 1/4"	214
425	46 3/4"	22 5/8"	31 1/4"	19 5/8"	28 1/2"	27 3/4"	21 1/8"	41 7/32"	32 17/32"	38 3/8"	1 1/2"	1 3/16"	26 3/4"	23 5/8"	2"	5/8"	25 1/4"	13"	252



## ACCESSORIES

- Back Draft Dampers
- Inlet & Outlet Screens
- Corrosion Resistant Finishes
- Vibration Isolation
- Belt Guard

For more information on accessories, see Options & Accessories page in Roof Mount Ventilation tab