

AVAILABLE WITH MOTORS & DRIVES FACTORY INSTALLED. CONSULT OUR DELAIR FAN SELECTION SOFTWARE FOR DETAILS.

300 SERIES

Forward Curved Roof Exhauster

For economical use in schools, hospitals, high rise apartments and many other commercial & industrial applications where quiet operation is required.



Canarm certifies that the 300 Series shown herein are licensed to bear the AMCA Seal. The ratings shown are based on tests and procedures performed in accordance with AMCA Publication 211 and AMCA Publication 311 and comply with the requirements of the AMCA Certified Ratings Programme.



FEATURES

- Square base allows discharge to be oriented in any of 4 directions.
- Back draft damper and bird screen included.
- Heavy duty ball bearings suitable for -65° to +250° F.
- Cabinet insulated with 1/2" fiberglass insulation.
- Low operating RPM of forward curved blowers results in low noise levels.
- Quiet operation. Blower is mounted on heavy steel angle with rubber isolators.
- Attractive green baked powder coat finish.
- Automatic gravity back draft damper and bird screen are included.
- Motor receives the cooling benefits of being in the air stream for increased motor life.
- Recessed base ensures weather proof mounting to curb.

PERFORMANCE SPECIFICATIONS

TYPICAL MAXIMUM CFM @ SP							
MODEL	1/2" SP	1" SP	1 1/2" SP	2" SP	2 1/2" SP	Min HP	Max HP
307	1200	1100	900	700	500	1/4	3/4
309	1800	1600	1300	1000	700	1/4	3/4
310	2800	2500	2200	2000	1600	1/4	1 1/2
312	3700	3300	2900	2500	1700	1/4	2
315	5700	5200	4600	4100	3400	1/2	3
318	8800	8000	7200	6600	5800	1/2	5

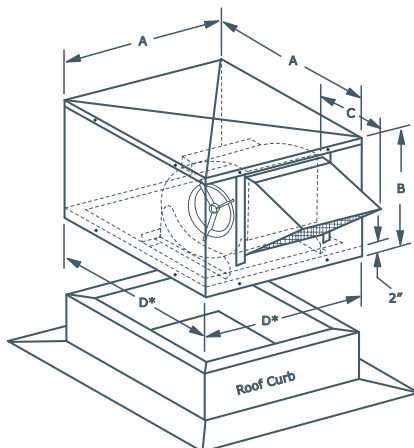
Power rating (BHP) does not include transmission losses. Performance certified is for installation type B - Free Inlet, Free Outlet. Performance ratings include the effects of the outlet hood and screen, but do not include the effect of other appurtenances (accessories).

CFM values listed above are summarized for convenience.

FOR FAN CURVES & FULL PERFORMANCE DATA, CONSULT OUR DELAIR SOFTWARE. DOWNLOAD DELAIR @ WWW.CANARM.COM/DELAIR

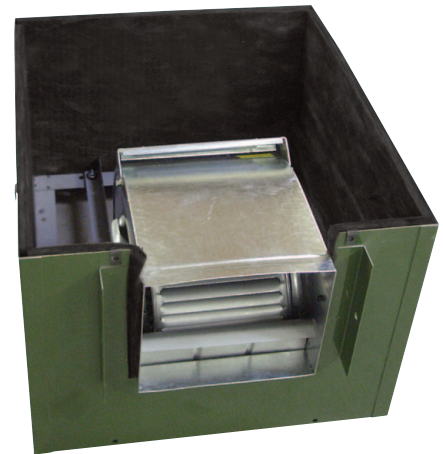
DIMENSIONS

MODEL	A	B	C	* D INSIDE	SHAFT DIAMETER	UNIT WEIGHT (LBS) (without motor & drives)
307	20 3/8"	16 5/8"	9"	20"	3/4"	45
309	24 3/8"	19 3/8"	10 5/8"	24"	3/4"	63
310	28 3/8"	21 3/8"	11 3/8"	28"	3/4"	88
312	32 3/8"	24 5/8"	13 1/8"	32"	3/4"	113
315	36 3/8"	28 3/8"	14 7/8"	36"	1"	156
318	40 3/8"	33 3/4"	17 3/8"	40"	1"	224



D is an inside dimension.
Curb size must be smaller to allow for flashing.

EASY TO SERVICE.
BLOWER, MOTOR AND
DRIVES ACCESSIBLE
THROUGH THE
CONVENIENT
REMOVABLE TOP.



BACK DRAFT DAMPER RESISTANCE CALCULATION

To estimate back draft damper resistance, use the following formula:

$$S.P. = \frac{CFM^2 \times \text{DAMPER FACTOR}}{1,000,000}$$

Example

Example Model 315, 1500 CFM

$$S.P. = \frac{1500 \times 1500 \times 0.052}{1,000,000} = 0.117 \text{ in. w.g.}$$

MODEL	DAMPER FACTOR
307	1.520
309	0.469
310	0.175
312	0.167
315	0.052
318	0.033