

MVVM

Plastic Hood - Mounting from the inside of building

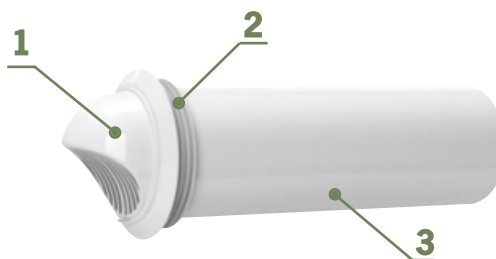


APPLICATION

- The outer hood is designed to prevent the access of water and large objects into the ventilation equipment from outside.
- Pre-installed with a hood, the air duct is mounted in a core hole drilled in the wall. The installation is done from the inside.
- Special design allows installation on high-rise buildings and enables airtight sealing of the air duct in the core hole.

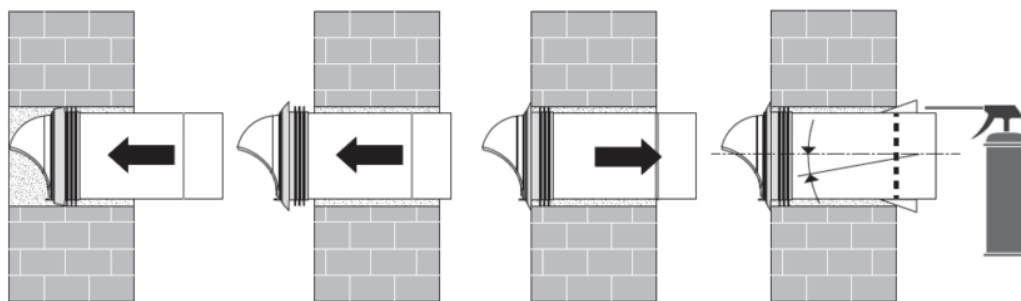
DESIGN

- Made of high-quality incombustible and ultraviolet resistant plastic.
- The air ducts are made of high-quality PVC plastic.
- The ventilation hood [1] is equipped with a silicone sealing ring [2] that firmly seals the air duct [3] in the core hole in the wall.



MOUNTING

- Drill a core hole with a diameter of 7" (180 mm) in the wall.
- Insert the hood into the wall core hole and push it through until the sealing ring appears on the outer side.
- Pull the hood in the opposite direction so the silicone sealing ring provides a tight seal between the hood and the wall.
- The air duct must be fixed in the wall core hole using mounting foam.



DIMENSIONS

MODEL	LENGTH	AIR PASS (M ²)
MVVM 162	-	0,0078
MVVM 162 03	11.8"	
MVVM 162 05	19.7"	
MVVM 162 07	27.6"	
MVVM 162 08	31.5"	

