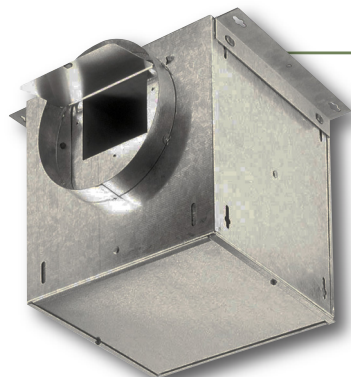


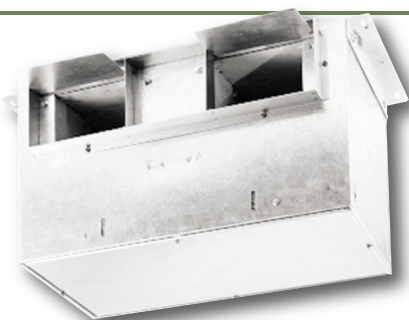


# CL-L SERIES

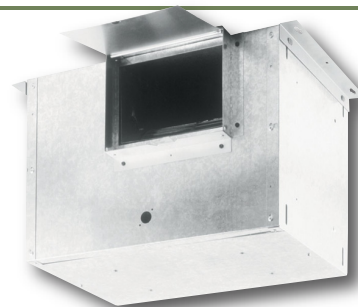
## In-line Ceiling Exhausters



CL100L/CL150L/CL200L/CL250L/CL300L  
IN-LINE VENTILATORS



CL400L/CL500L/CL700L  
IN-LINE VENTILATORS



CL900L/CL1500L  
IN-LINE VENTILATORS

### FEATURES

- Low RPM for quiet operation
- Resilient anti-vibration blower mounts
- Dynamically balanced polymeric centrifugal blower wheel(s) for quiet efficient performance
- Permanently lubricated thermally protected 120v motor with plug disconnect, designed for continuous operation
- Round or rectangular duct connections
- Quiet automatic backdraft damper(s)
- Standard straight through inline discharge (field convertible to right angle discharge)

### PERFORMANCE SPECIFICATIONS

MODEL	CFM @ .125" SP	SONES	AMPS	WATTS	DUCT
<b>In-Line Ventilator (No Grille)</b>					
CL100L	106	0.7	1.1	87	6"
CL150L	147	1.1	1.3	100	6"
CL200L	195	1.9	1.8	127	6"
CL250L	245	2.3	2.1	166	6"
CL300L	293	3.1	2.6	212	6"
CL400L	406	1.6	1.4	146	4 1/2" x 18 1/2"
CL500L	519	3.4	2.2	232	4 1/2" x 18 1/2"
CL700L	681	3.7	2.9	313	4 1/2" x 18 1/2"
CL900L	894	3.8	3	306	8" x 12"
CL1500L	1214	6.7	5	468	8" x 12"

### OPTIONS & ACCESSORIES

- Speed control
- Wall cap, roof jack, roof cap (self-flash or curb mounted)
- Rectangular to round inlet and/or discharge adapter (CL400-1500)
- RIS hanging isolators

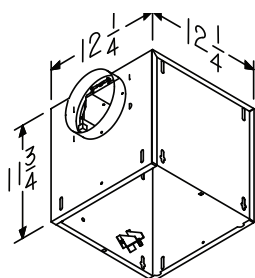


Canarm certifies that the models shown herein are licensed to bear the AMCA Seal. The ratings shown are based on tests and procedures performed in accordance with AMCA Publication 211 (and AMCA Publication 311 if sound is also certified) and comply with the requirements of the AMCA Certified Ratings Programme.

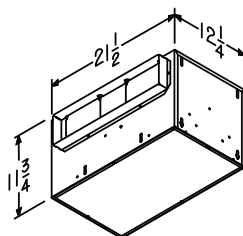


### DIMENSIONS

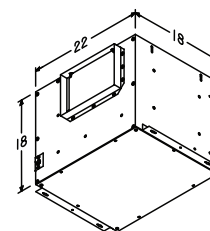
CL100L/CL150L/CL200L/CL250L/CL300L  
IN-LINE VENTILATORS



CL400L/CL500L/CL700L  
IN-LINE VENTILATORS



CL900L/CL1500L  
IN-LINE VENTILATORS

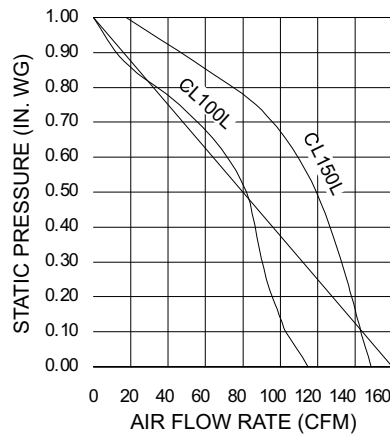


# CL-L SERIES

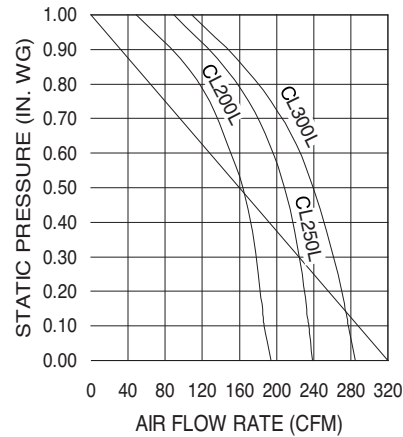
Inline Ceiling Exhausters

## FAN CURVES

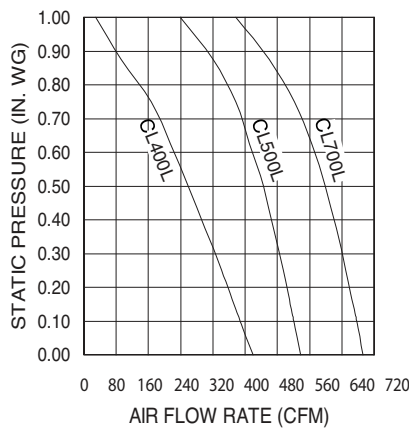
**CL100L/CL150L**



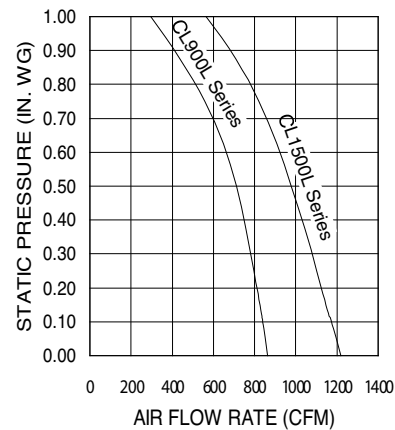
**CL200L/CL250L/CL300L**



**CL400L/CL500L/CL700L**



**CL900L/CL1500L**



Canarm Model	Watts Amps	Nom RPM	CFM @ INWG											Unit Weight	Intake & Discharge Size
			FA	0.100	0.125	0.250	0.375	0.500	0.625	0.750	0.875	1.000			
CL100L	87	760	121	108	106	97	93	86	70	44	17	--	22.9 lbs	6" Rd	
	1.1	Sones	0.5	0.7	0.7	1.1	1.4	1.8	2.1	2.4	2.6	--			
CL150L	100	920	153	148	147	140	134	125	111	91	54	18	22.9 lbs	6" Rd	
	1.3	Sones	0.9	1.0	1.1	1.4	1.6	1.9	2.1	2.2	2.4	2.6			
CL200L	127	865	205	196	195	190	185	175	158	135	96	47	23.1 lbs	8" Rd	
	1.8	Sones	1.7	1.9	1.9	2.1	2.3	2.4	3.0	3.3	3.4	3.4			
CL250L	166	1005	248	245	245	241	235	224	208	183	141	84	23.2 lbs	8" Rd	
	2.1	Sones	2.0	2.3	2.3	2.6	2.8	3.2	3.4	3.6	3.9	3.8			
CL300L	212	1145	300	294	293	285	274	259	243	214	168	113	23.2 lbs	8" Rd	
	2.6	Sones	2.9	3.0	3.1	3.3	3.4	3.5	3.6	3.7	4.0	3.9			
CL400L	146	775	450	415	406	360	313	271	223	167	90	--	33.9 lbs	18-1/2" x 4-1/2"	
	1.4	Sones	1.4	1.6	1.6	1.9	2.2	2.6	2.9	3.4	3.6	--			
CL500L	232	890	546	526	519	496	472	447	407	364	306	232	33.9 lbs	18-1/2" x 4-1/2"	
	2.2	Sones	2.4	2.4	3.4	3.7	3.9	3.8	3.9	4.0	4.3	4.3			
CL700L	313	1090	704	686	681	656	631	604	575	533	480	412	34 lbs	18-1/2" x 4-1/2"	
	2.9	Sones	3.6	3.8	3.7	3.9	4.0	4.2	4.3	4.4	4.7	5.0			
CL900L	306	810	930	902	894	853	807	754	685	587	442	300	64.4 lbs	12" x 8"	
	3.0	Sones	3.7	3.8	3.8	3.8	3.7	3.8	3.9	4.0	4.0	4.1			
CL1500L	468	1055	1,275	1,225	1,214	1,152	1,092	1,029	958	871	764	631	64.5 lbs	12" x 8"	
	5.9	Sones	6.8	6.8	6.7	6.5	6.3	6.0	6.0	6.0	6.0	6.1			

# CL & CL-L SERIES ACCESSORIES

## CEILING RADIATION DAMPERS

Models RD1/RD2/RD3



When excessive heat is detected, the breakaway fusible link triggers the closing of the radiation damper's fire resistant screen to prevent smoke and fire from travelling through the ductwork.

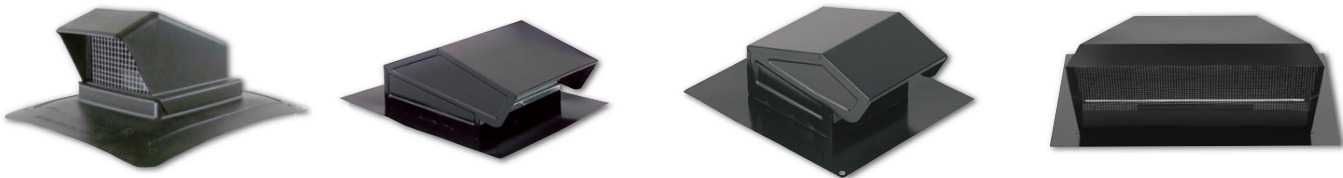
## INLINE ADAPTOR KITS FOR CEILING EXHAUST FANS

Models IA961L/IA981L/IA982L/IA983L



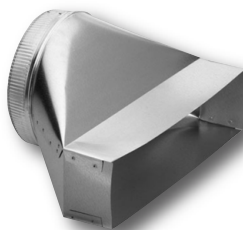
## ROOF JACKS

Models RJ636/RJ634/RJ437/RJ4P/RJ6P



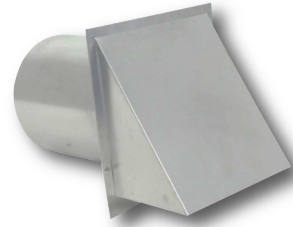
## TRANSITIONS

Models TRN423/TRN81212



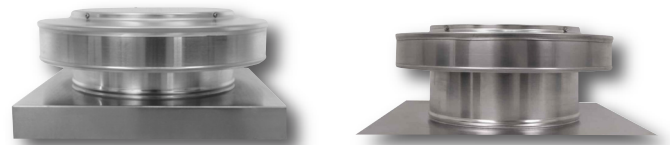
## WALL CAPS

Models WC4A/WC6A/WC8A/WC10A/WC12A



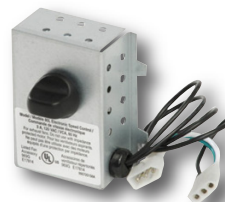
## ROOF CAPS

Models RCSF6/RCSF8/RCSF10/RCSF12/RCCM6/RCCM8/RCCM10/RCCM12



## CONTROLS

MC80L



MC3/MC5

