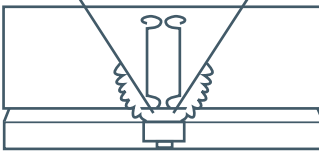
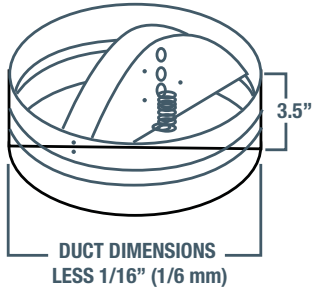
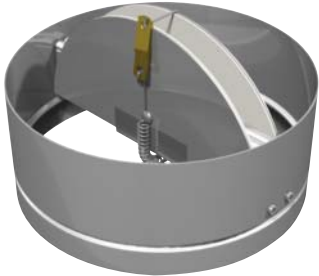
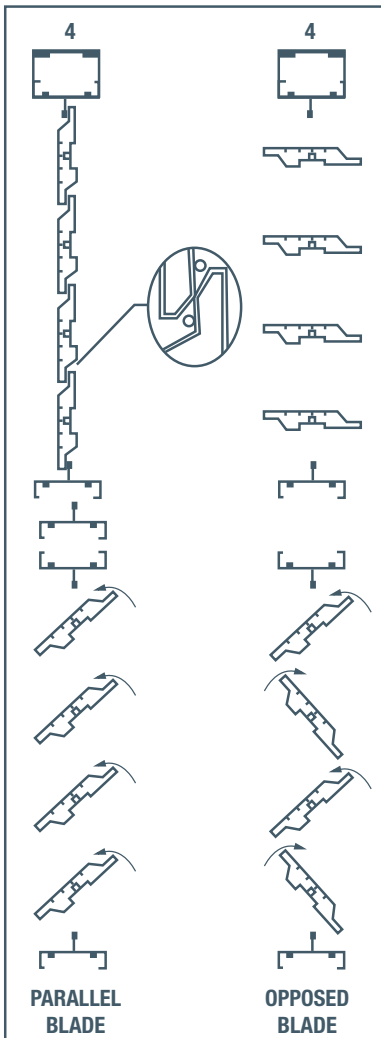


CD-RD - ROUND CEILING DAMPER STANDARD CONSTRUCTION



CD-RD-A-85
WITH ADJUSTABLE VOLUME CONTROLLER



MODELS

- **CD-RD-85** - Round, butterfly-type (non asbestos)
- **CD-RD-A-85** - Round, butterfly-type (non asbestos) with adjustable volume control

FEATURES

- **FRAME:** 24 gauge galvanized steel
- **BLADES:** 22 gauge galvanized steel.
- **THERMAL BLANKET:** non-asbestos ceramic blanket
- **SPRING:** corrosion resistant steel spring
- **FUSIBLE LINK:** replaceable 212°F standard. Other ratings available.
- **FINISH:** mill
- **SIZES:** Minimum size: 5"; Maximum size: 15"
(For sizes 16" to 20" CFSR-2 will be supplied.)
- **UL/UCL LISTINGS:** 3 - 4 hours

ORDERING METHOD

- Use diameter required: **CD-RD-diameter** eg) CD-RD-8



Non-standard dampers are non-returnable and cannot be cancelled.

AD - AF ALUMINUM CONTROL DAMPERS

FEATURES

- **DEPTH BLADES CLOSED:** 4" (101 mm)
- **DEPTH BLADES OPEN:** 6 1/8" (156 mm)
- **MATERIAL:** extruded 6063-T5 aluminum
- **FRAME THICKNESS:** 0.081" (2.06 mm)
- **BLADE STYLE:** **OB** - opposed blade standard; **PB** - parallel blade on request
- **BLADE THICKNESS:** 0.081" (2.06 mm)
- **BEARINGS:** moulded synthetic (Acetal)
- **SEALS:** co-extruded santoprene vinyl blade seal and vinyl jamb seal
- **AXLES:** 3/8" aluminum square bar
- **FRAME STYLE:** specify **DM** for Duct Mount or **FM** for Flange Mount
- **MINIMUM HEIGHT:** 8" (203 mm) single blade; 15" (381 mm) multiple blade
- **MAXIMUM PANEL WIDTH:** 60" (1524 mm)
- **MAXIMUM PANEL HEIGHT:** 60" (1524 mm)
- **MAXIMUM SYSTEM PRESSURE:** 5" w.g. for 60" blades
- **LEAKAGE:** does not exceed 7 CFM/ft² (341/s/m²) against 4" w.g. (1 kPa) differential static pressure at -40°F (-40°C)
- **LINKAGE:** concealed in frame
- **STANDARD FINISH:** mill
- **STANDARD MOTOR INSTALLATION:** side shaft direct drive, extendable up to 12"

ORDERING METHOD

- **DUCT MOUNT:** AD-WxH
- **FLANGE MOUNT:** AF-WxH



Non-standard dampers are non-returnable and cannot be cancelled.