

U - SMOKE EJECTOR SERIES & ACCESSORIES



FANTRAXX smoke ejectors have been designed to meet fire service needs. The units are available in various configurations and sizes to satisfy almost any application. FANTRAXX smoke ejectors produce high volumes of air in compact and efficient designs. Sizes range from 12" up to 24" blade diameters. Totally enclosed and explosion proof motors range in size from 1/3 HP to 1 1/2 HP. Entire fan assemblies are certified as shown.

All FANTRAXX smoke ejectors are finished in a tough powder coat finish with cadmium plated safety guards. All motors are ball bearing and require no maintenance. Voltages other than those listed (including 50HZ) are available. Consult factory. All units are equipped with 6 feet of cord with a plug (explosion proof units are minus plug). Available accessories include hanger bars and hooks, collar adaptors, flexible hoses, hose connectors and misting adaptor kits.



FEATURES

- Available in 12" to 24" sizes.
- Totally enclosed ball bearing motor and explosion proof models available.
- Powder coated housing.
- Fans come complete with 6 foot cord and plug (explosion proof motors come without a plug).

	MODEL	APPROVAL	MOTOR	HP	RPM	VOLTAGE	FULL LOAD AMPERAGE (115)	CFM	WEIGHT (LBS)	FAN DIMENSIONS (H X W X L)	
BLADE DIAMETER	12"	U12-1	CSA	Totally enclosed	1/3	1725	115	5.4	1620	40	14 1/8" X 14 1/8" X 17"
	16"	U16-1	CSA	Totally enclosed	1/3	1725	115	5.4	3151	49	19 1/8" X 19 1/8" X 17"
		U16-1HD	-	Totally enclosed	1/2	1725	115/230	8.8	3740	64	
		U16-4	CSA	Explosion proof	1/3	1725	115	5.4	3151	54	
		U16-4HD	-	Explosion proof	1/2	1725	115/230	8.0	3740	83	
	18"	U18-1	CSA	Totally enclosed	1/3	1725	115	5.4	3700	52	21 3/8" X 21 3/8" X 17"
		U18-1HD	-	Totally enclosed	3/4	1725	115/230	11	5170	78	
		U18-4	CSA	Explosion proof	1/3	1725	115	5.4	3700	57	
		U18-4HD	-	Explosion proof	3/4	1725	115/230	10.8	5170	96	
	20"	U20-1HD	-	Totally enclosed	1	1725	115/230	13.4	6850	98	24 3/8" X 24 5/14" X 17"
		U20-4HD	-	Explosion proof	1	1725	115/230	13.4	6850	118	
	24"	U24-1HD	-	Totally enclosed	1 1/2	1725	115/230	15.2	9280	112	26 1/8" X 26 1/8" X 17"
		U24-4HD	-	Explosion proof	1 1/2	1725	115/230	19	9280	134	

Please note this product is currently under review and the dimensions may change.
Please call for details.



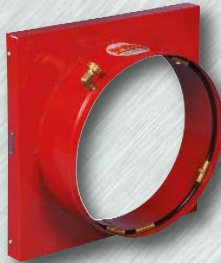


U ACCESSORIES



MISTING ADAPTOR KIT

The Misting Adaptor Kit directs a fine water vapour mist into the discharge of a Smoke Ejector. This mist is evaporated into the air blowing from the fan reducing ambient air temperatures as much as 10-20° F, depending on temperature and humidity. Perfect for spot cooling in hot environments. The Misting Adaptor Kit quickly attaches to a Smoke Ejector with spring clips. The Misting Adaptor Kit connects to a standard 3/4" garden hose and uses less than 2 gallons of water per hour.



MODEL	FAN SIZE	WEIGHT (LBS)
MAK12	U12	7
MAK16	U16	8
MAK18	U18	9
MAK20	U20	15
MAK24	U24	TBA

HANGER BARS / HOOKS



MODEL	DESCRIPTION
SEH-3	DOOR HANGER BAR
SEH-HB	HANGER HOOKS (PAIR)

FLEXIBLE HOSE

Our Flexible Hose is constructed from a PVC fabric sewn around a spring wire helix. Temperature range is from -20° to 200°F. Flexible Hose is flame resistant and compressible to 1/5 extended length. Comes equipped with quick release buckle on one end and outlet ring on the other end.



8" & 12" models come complete with soft carrying case.

MODEL	DIAMETER	LENGTH	FAN SIZE
H8BC	8"	15'	U12
H12BC	12"	15'	U12
H16BC	16"	20'	U16
H18BC	18"	20'	U18
H20BC	20"	20'	U20
H24BC	24"	20'	U24

HOSE CONNECTORS

Hose Connectors are required when attaching two lengths of hose together. Two gear clamps are included.



MODEL	FOR HOSE DIAMETER
HK8	8"
HK12	12"
HK16	16"
HK18	18"
HK20	20"
HK24	24"

COLLAR ADAPTORS

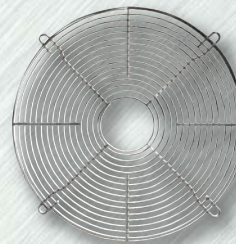
Collar Adaptors are required when using flexible hose. Easily attached to the inlet or discharge of a Smoke Ejector with spring clips (included).



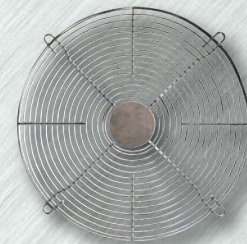
MODEL	HOSE SIZE	FAN SIZE	WEIGHT (LBS)
CA12-12	12"	U12	7
CA16	16"	U16	8
CA18	18"	U18	9
CA20	20"	U20	15
CA24	24"	U24	TBA

UTILITY GUARDS

Utility Guards have the centres cut out. To order with centre, do not include C in the model number.



2U121CLFI



2U121LFI

MODEL	SIZE
2U121CLF I	12"
2U161CLF I	16"
2U181CLF I	18"
2U202CLF I	20"
MC27GC	27"
MC30CG	30"

POSITIVE PRESSURE VENTILATORS



PGB - GASOLINE MOTOR

The **FANTRAXX** Positive Pressure Blower is a high volume fan used to pressurize a burning structure in order to force the smoke out. Positive Pressure Blowers are portable, gasoline powered fans, most of which utilize a 5.5 horsepower engine. The theory of positive pressure ventilation is based on the principal of even pressure distribution. Once a structure is pressurized, air and smoke can be forced through any opening (similar to air escaping from an inflated balloon). Electric smoke ejectors (negative pressure ventilation) can be used for smoke removal but this has been proven to be inferior to positive pressure ventilators.



HONDA ENGINE SPECIFICATIONS

- Power Output Standard: 5.5 + 6.5 HP @3600rpm
- Power Output Oil Alert: 5.5 + 6.5 HP @3600rpm
- Ignition System: transistorized
- Carburetor: gravity float
- Valves: overhead
- Fuel Tank Capacity: 3.6 ltr/.95 US gallon
- Oil Capacity: 0.6 ltr/.53 US quart
- Oil Alert: optional
- 5.5 HP Model Number: GX160
- 6.5 HP Model Number: GX200

		MODEL #	BLADE DIAMETER	CFM @ 0" SP	TILT ANGLE	SET BACK	H.P	MOTOR	RPM	WEIGHT (LBS)	DIMENSIONS (INCHES) (H X W X L)
TYPE	STANDARD	PGB18LP-4H	18"	16447	20°	72"	5.5	Honda	3440	80	23 5/8 X 22 3/4 X 23 7/8
		PGB21-4H	21"	17321	20°	60"	5.5	Honda	3272	88	27 1/4 X 28 3/4 X 24 7/8
		PGB24-4H	24"	19555	20°	72"	5.5	Honda	3347	95	28 3/4 X 30 3/8 X 24 7/8
		PGB24-6H	24"	20478	20°	84"	6.5	Honda	2901	98	28 3/4 X 30 3/8 X 24 7/8
	OIL ALERT	PGB18LP-4HO	18"	16447	20°	72"	5.5	Honda	3440	80	23 5/8 X 22 3/4 X 23 7/8
		PGB21-4HO	21"	17321	20°	60"	5.5	Honda	3272	88	27 1/4 X 28 3/4 X 24 7/8
		PGB24-4HO	24"	19555	20°	72"	5.5	Honda	3347	95	28 3/4 X 30 3/8 X 24 7/8
		PGB24-6HO	24"	20478	20°	84"	6.5	Honda	2901	98	28 3/4 X 30 3/8 X 24 7/8

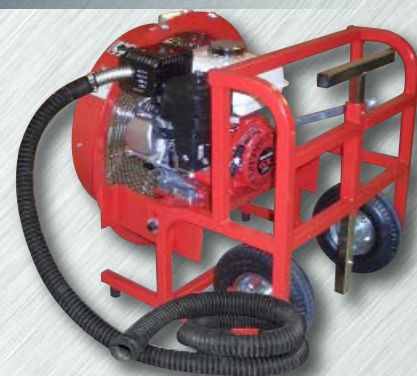
Please note this product is currently under review and the dimensions may change. Please call for details.

NOTE: The PGB series positive pressure ventilators cannot be returned once gas and/or oil has been added to the engine.



PGBEXT-10 - EXHAUST EXTENSIONS

- A clip-on extension made from a special heat resistant rubber compound. Contaminants are exhausted away from the air stream.
- Available in 10' lengths





POSITIVE PRESSURE VENTILATORS

PEB - ELECTRIC MOTOR



The PEB series Positive Pressure Ventilator is built on the same frame and has the same standard features as the gasoline engine driven ventilators. The PEB series features 115/230V, TEFC motors with 6ft cords. These units are essential in applications where it is critical that no carbon monoxide and other exhaust contaminants be introduced into buildings or enclosures. The PEB series Positive Pressure Ventilator runs at sound levels that are considerably quieter than their gasoline engine powered counterparts.

Please note that these product dimensions have changed.
Please see chart below or call for details.

		MODEL #	BLADE DIAMETER	CFM @ 0" SP	TILT ANGLE	SET BACK	H.P	AMPS @ 115V	RPM	WEIGHT (LBS)	DIMENSIONS (INCHES) (H X W X L)
MOTOR	TEFC	PEB18-1LP	18"	9440	20°	60"	1.0	14.0	1753	76	23 X 22 3/4 X 23 7/8
		PEB21-1	21"	12803	20°	84"	1.5	17.2	1750	92	27 1/2 X 28 3/4 X 24 7/8
		PEB24-1	24"	15875	20°	72"	2.0	20.0	1755	105	29 1/4 X 30 3/8 X 24 7/8
	EXPLOSION PROOF	PEB18-4LP	18"	9440	20°	60"	1.0	13.4	1753	100	23 X 22 3/4 X 23 7/8
		PEB21-4	21"	12803	20°	84"	1.5	19.0	1750	151	27 1/2 X 28 3/4 X 24 7/8
		PEB24-4	24"	15875	20°	72"	2.0	22.0	1755	159	29 1/4 X 30 3/8 X 24 7/8

STANDARD FEATURES - GAS & ELECTRIC



- Steel fan shroud.
- 1" tubular frame.
- Red, powder coated finish
- Polypropylene propeller
- Ease of transportation with two lift points.



A unique tilt and lock device allows the blower to be angled up to 20°.



All models are equipped with 8" pneumatic tires mounted on steel rims with ball bearing hubs and a full width axle.



The telescoping easy grip extra wide "T" handle is fire fighter friendly and is standard on all models. Fold down handle on 18" Low Profile Ventilator.

CONFINED SPACE VENTILATORS



CSV08

- New low cost - great features
- High output
- 8" size
- Safety red color.
- Supply or exhaust applications.
- Durable, noise dampening, light weight polyethylene design.
- Flex hose quickly attach to either intake or exhaust.
- Weather proof on/off switch.
- Stackable



MODEL	SPEED	H.P.	FREQUENCY (HZ)	RPM	VOLTAGE	CFM	WEIGHT (LBS)	DIMENSIONS (L X W X H)
CSV08	SINGLE	1/3	60	2850	115	1000	20	15" x 13" x 15"

ACCESSORIES

CONFINED SPACE VENTILATORS ACCESSORIES

FLEXIBLE HOSE - H8BC

8" inside diameter x 15' flexible hose equipped with quick release buckle on one end and outlet ring on the other end. Temperature range is from -20° to 200°F. Fits CSV08 confined space ventilators shown above

Comes complete with soft carrying case.



HOSE CONNECTORS - HK8

Hose Connectors are required when attaching two lengths of hose together. Two gear clamps are included.





BF - SMOKE GENERATOR



- **IMPRESSIVE OUTPUT** - huge, continuous fog output from a re-engineered heat exchanger.
- **DESIGN INGENUITY** - A simple, yet extremely effective fog machine incorporating a large heating block, a powerful whisper quiet pump and our cutting edge Rapid Change .Technology.
- **SERVICE & RELIABILITY** - A one year warranty on all parts & service, a lifetime warranty on the heat exchanger, plus the best after-sale service in the industry.
- **ATTRACTIVE DURABILITY** - A large, one gallon fluid tank prevents leaks and drips, a special hammer-tone finish resists scratches and wear and a built in handle balances off a sleek, rugged chassis.
- **UNBEATABLE VALUE** - Comes standard with a 25ft deluxe remote, an onboard microprocessor and a spare replacement Rapid Change Rebuild Kit.

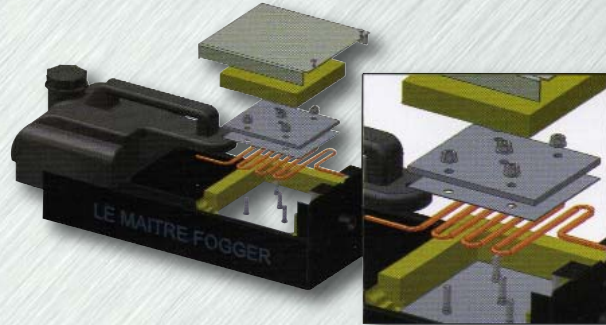
FEATURES

- Microprocessor controlled.
- Continuous fog output.
- Heavy duty powder coated chassis.
- Electro-mechanical over temperature protection.
- One gallon no leak integrated fluid reservoir.
- New Rapid Change Replacement Kit.
- Illuminated fog ready switch on the remote.
- Includes full function timer remote control.
- RJ45 Neutrik Connector with 25' cable.

RAPID CHANGE TECHNOLOGY

Now you can quickly and easily make a capillary tube change on the fly, wherever your fogger is, with our innovative Rapid Change Technology (RCT) heat exchanger design. Our RTC design ingeniously overcomes a machine's biggest service issue: a plugged heating block due to normal wear and tear.

All you need is 15 minutes, a crescent wrench, a Leatherman and a Rapid Change replacement kit (the replacement kit is free with the battle fogger) and your fog machine is as good as new.



OUTPUT

- Continuous fog run time.
- cc/min at burst output: 108
- cc/min at continuous output: 60
- Cubic feet/min at continuous output: 4200 at 1 meter visibility
- Cubic feet/min at burst output: 7560 at 1 meter visibility
- Power requirements: 12 amps at 115 volts

MODEL	VOLTAGE	AMPS @ 115V	HEATER WATTS	CUBIC FEET A MINUTE		RESERVOIR	WEIGHT (LBS)	DIMENSIONS (H X W X L)
				BURST OUTPUT	CONTINUOUS OUTPUT			
BF100	115	12	1200	7560	4200	1 Gallon	25	9 1/2" x 9 3/8" x 22 1/2"

ACCESSORIES

- CXP2831 - Road case
- Remote extension cable
- Truss hanging bracket



SMOKE FLUID (MODEL G2751)

- Smoke fluid is a clean, white, dry, non-toxic odorless water based fluid.
- Sold in case of 4 x 4 litre jugs only.



Smoke generator products are special non-stock items and are non-returnable and cannot be cancelled.

