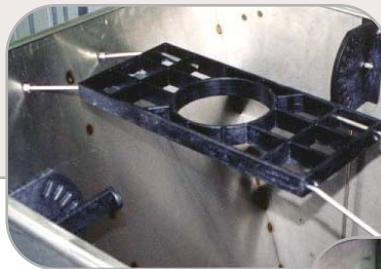


Wet Dry Feeders



Features

- .304 series, 14 ga high grade stainless steel construction.
- Fittings and bolts inside feeder are stainless steel.
- Equipped with adjustable shelf and solid divider.
- Can be installed between existing partitions or mounted on the floor.
- Available in 12", 24" , 36", 48" & 60" lengths.
- Complete with new adjuster and drop tube holder.



Nursery Feeders

Features

- Easily adjusted feed flow.
- .304 series, 20 ga. stainless steel construction.
- Fittings and bolts inside feeder are stainless steel.
- Double-sided and single-sided available.
- Available in 24", 30", 36", 42", 48" & 60" lengths.



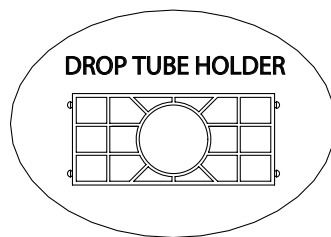
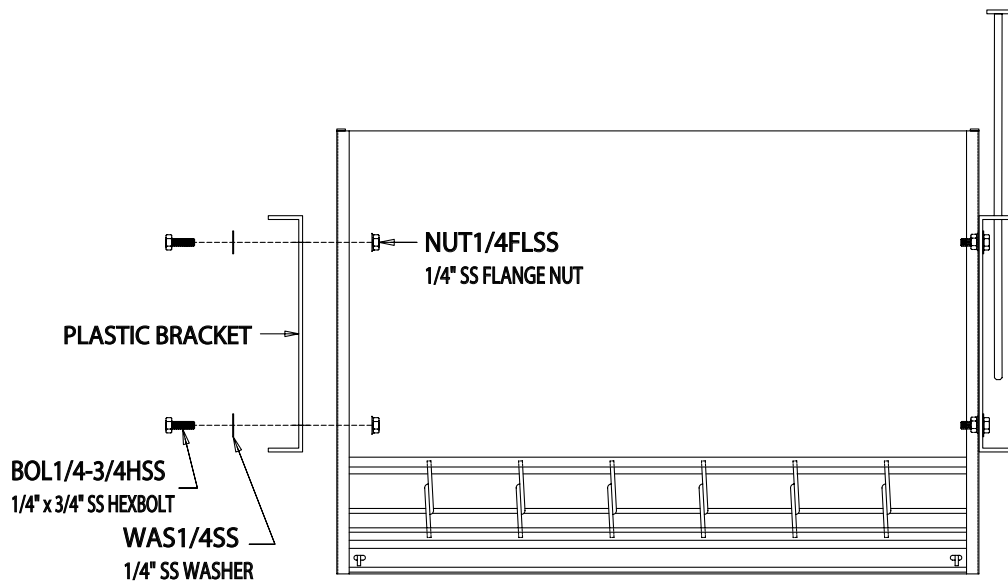
CANARM LTD. - Corporate Office
 2157 Parkedale Ave., Brockville, ON
 Canada K6V 5V6
 Tel: (613) 342-5424 Fax: 1-800-263-4598

CANARM LTD.
 808 Commerce Park Drive
 Ogdensburg, New York, USA 13669
 Tel: 1-800-267-4427 Fax: 1-800-263-4598

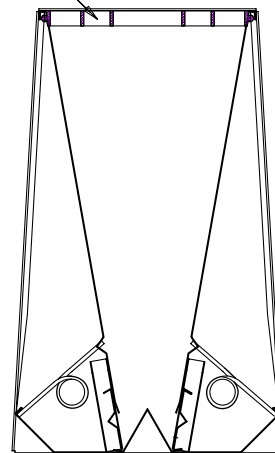
Arthur Manufacturing Facility
 #7686 Concession 16, RR 4 Arthur, ON
 Canada NOG 1A0
 Tel: (519) 848-3910 Fax: (519) 848-3948
 Web Site: www.bsmagri.com
 E-Mail: sales@bsmagri.com

Web Site: www.canarm.com
 E-Mail: agsales@canarm.ca

ASSEMBLY



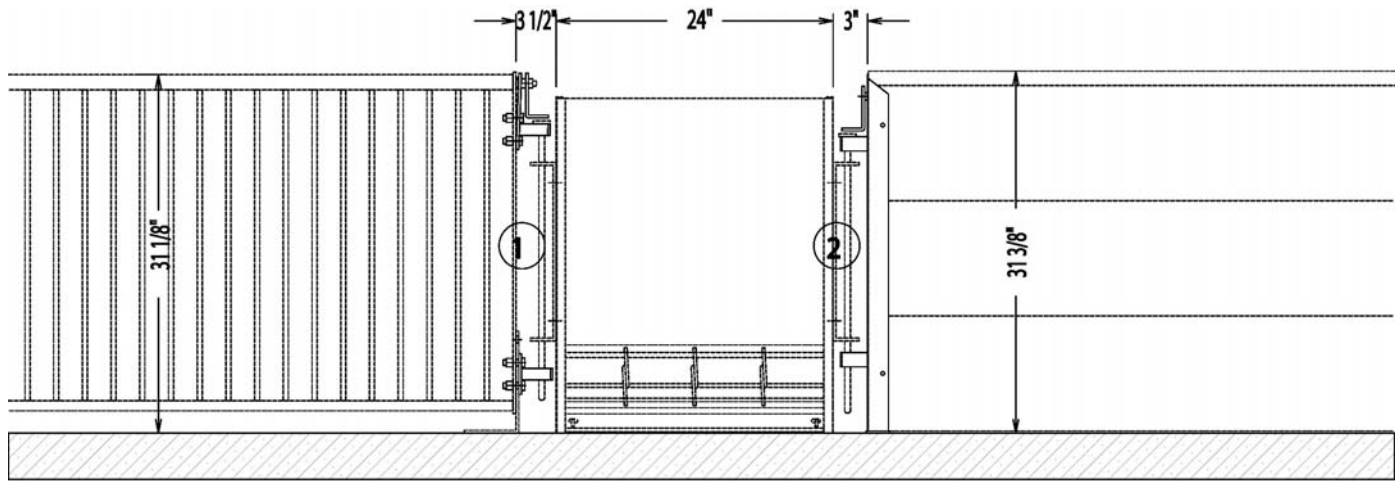
SIDE VIEW



ASSEMBLY INSTRUCTIONS

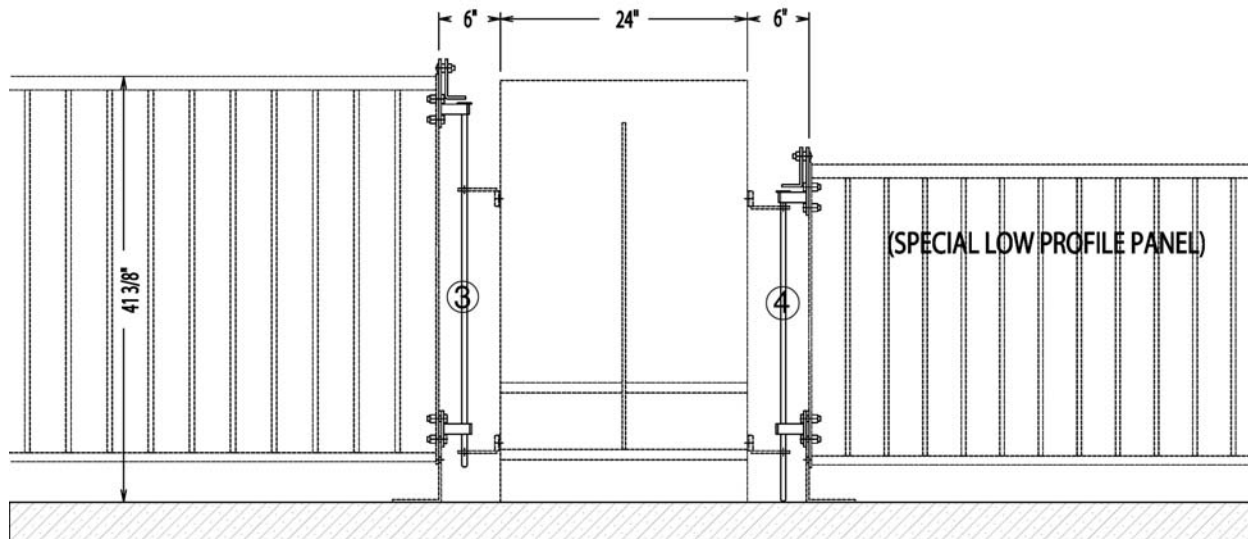
1. Fasten plastic brackets to feeder as shown.
2. Snap drop tube holder into place.
NOTE: 30-48" feeders come with extra holes for drop tube holder.
 Use the set of holes that best suits your need.

ASSEMBLY - NURSERY



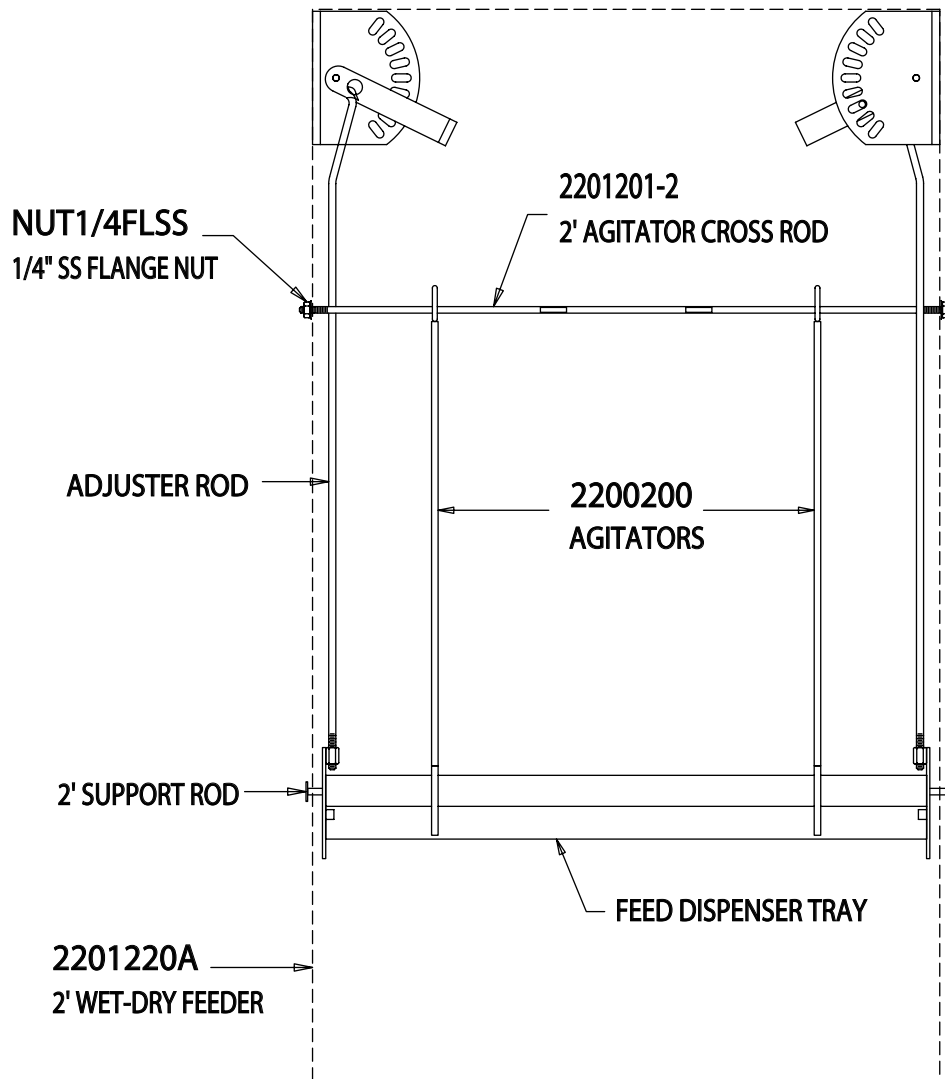
ILLUS.	DESCRIPTION	PART #	QTY.
1	BOTTOM LOOP - 2010330	2010324 (Hardware is included with package)	2 pcs.
	TOP LOOP / FLIPPER MOUNT - 2010331		2 pcs.
	FLIPPER - 2010332		2 pcs.
2	31" SS CHANNEL ONLY + PL + LOOPS - 2013329F FLIPPER - 2010332	2013329FDR (Hardware is included with package)	1 pc. 1 pc.

ASSEMBLY - FINISHER



ILLUS.	DESCRIPTION	PART #	QTY.
3	35" LG. HINGE PIN c/w WASHER - 2010202	2010327 (Hardware is included with package)	2 pcs.
	BOTTOM LOOP - 2010330		2 pcs.
	TOP LOOP / FLIPPER MOUNT - 2010331 FLIPPER - 2010332		2 pcs. 2 pcs.
4	30" LG. HINGE PIN c/w WASHER - 2010203	2010325 (Hardware is included with package)	2 pcs.
	BOTTOM LOOP - 2010330		2 pcs.
	TOP LOOP / FLIPPER MOUNT - 2010331 FLIPPER - 2010332		2 pcs. 2 pcs.

ASSEMBLY



ASSEMBLY INSTRUCTIONS

1. Slide agitators onto agitator cross rod.
2. Lower feed tray to lowest setting.
Slide agitators in place between feed tray & angled plates.
3. Insert cross rod into feeder sides & fasten with 1/4" S.S. flange nut.



ORDERING GUIDELINES



WET/DRY FEEDERS ** 50-220 lb. Pigs

1. **Order feeder** - Specify length, calculate using 10-12 pigs per opening (openings are 12" o.c.)
- Specify pin-in or floor mount
2. **Order agitator** - If required for high moisture feeds
3. **Order plumbing kit** - One per feeder

NURSERY FEEDER ** 15-75 lb. Pigs

1. **Order feeder** - Specify length, calculate using 4-5 pigs per opening (openings are 6" o.c.)
2. **Order pin-in packages** - Order feeder parts package (20110324) for mounting on spindle panels
- Order feeder channel (2013329FDR) for mounting on plastic panels
- Order feeder package for finisher panel, specify 30" or 35" pin
(for wet/dry feeders)